



SIMPLY HOMES

**Gilston Park House**

Harlow CM20 2SF

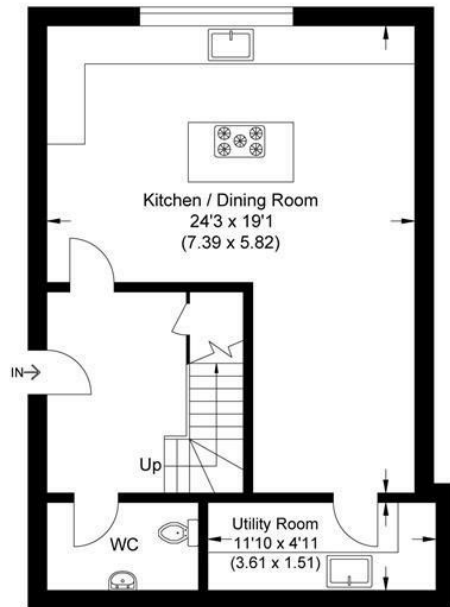
# Gilston Park House

Harlow CM20 2SF

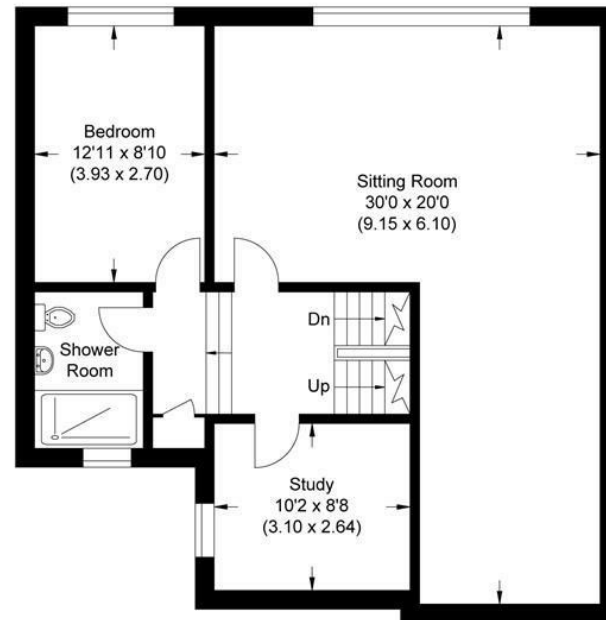




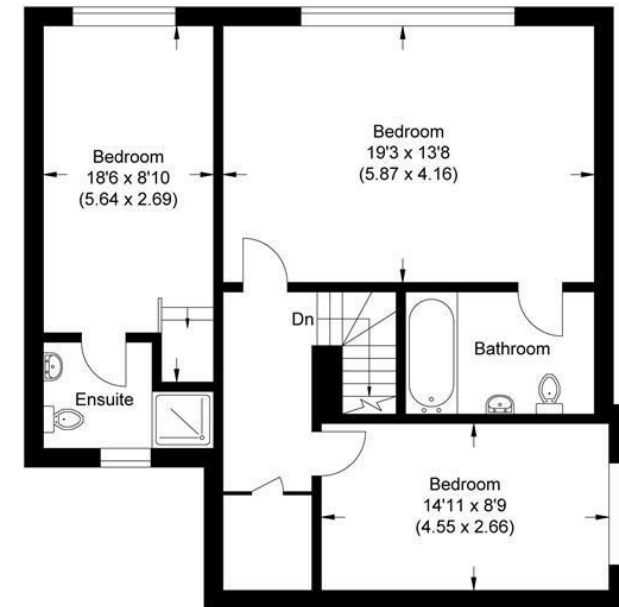
Approximate Gross Internal Area  
201.50 sq m / 2168.92 sq ft



Ground Floor



First Floor



Second Floor

Illustration for identification purposes only, measurements are approximate, not to scale.



SIMPLY HOMES

115 Fore Street | Hertford | SG14 1AS | 01992 558 557 | sales@simply-homes.co.uk | simply-homes.co.uk | Find us on

