

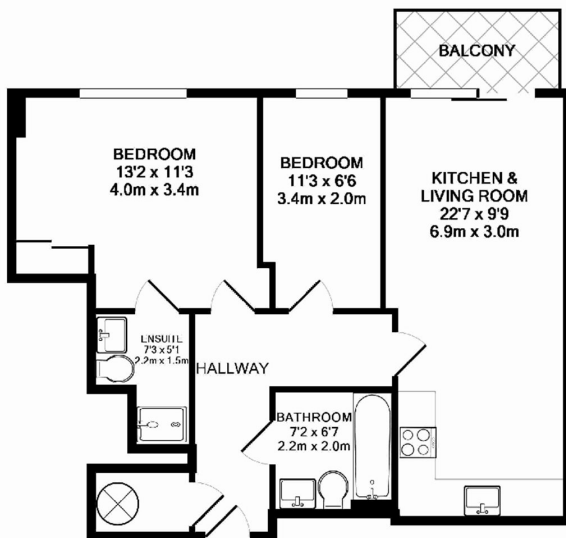


CITY PENINSULA BARGE WALK, SE10

£425,000

This apartment is approximately 610 square feet and holds an immaculate, open plan kitchen/living area, master bedroom with an en-suite and a good size second bedroom, separate bathroom and not to mention a private balcony with the influx of natural light, fresh air and lovely river views.

- 24h Concierge
- Service Charge: £4006
- Secure Video Entry
- Ground Rent: £300



TOTAL APPROX. FLOOR AREA 601 SQ.FT. (55.8 SQ.M.)

Whilst every attempt has been made to ensure the accuracy of the floor plan contained here, measurements of doors, windows, rooms and any other items are approximate and no responsibility is taken for any error, omission, or mis-statement. This plan is for illustrative purposes only and should be used as such by any prospective purchaser. The services, systems and appliances shown have not been tested and no guarantee as to their operability or efficiency can be given
Made with Metropix ©2016

LiFE RESIDENTIAL

6 Victoria Parade, London,
SE10 9FR
Sales: 020 8446 2521
Lettings: 020 8418 3609

Energy Rating: . We aim to make our particulars both accurate and reliable. However they are not guaranteed; nor do they form part of an offer or contract. If you require clarification on any points then please contact us, especially if you're traveling some distance to view. Please note that appliances and heating systems have not been tested and therefore no warranties can be given as to their good working order.