



## Kendrey Gardens, TW2

### £843,000

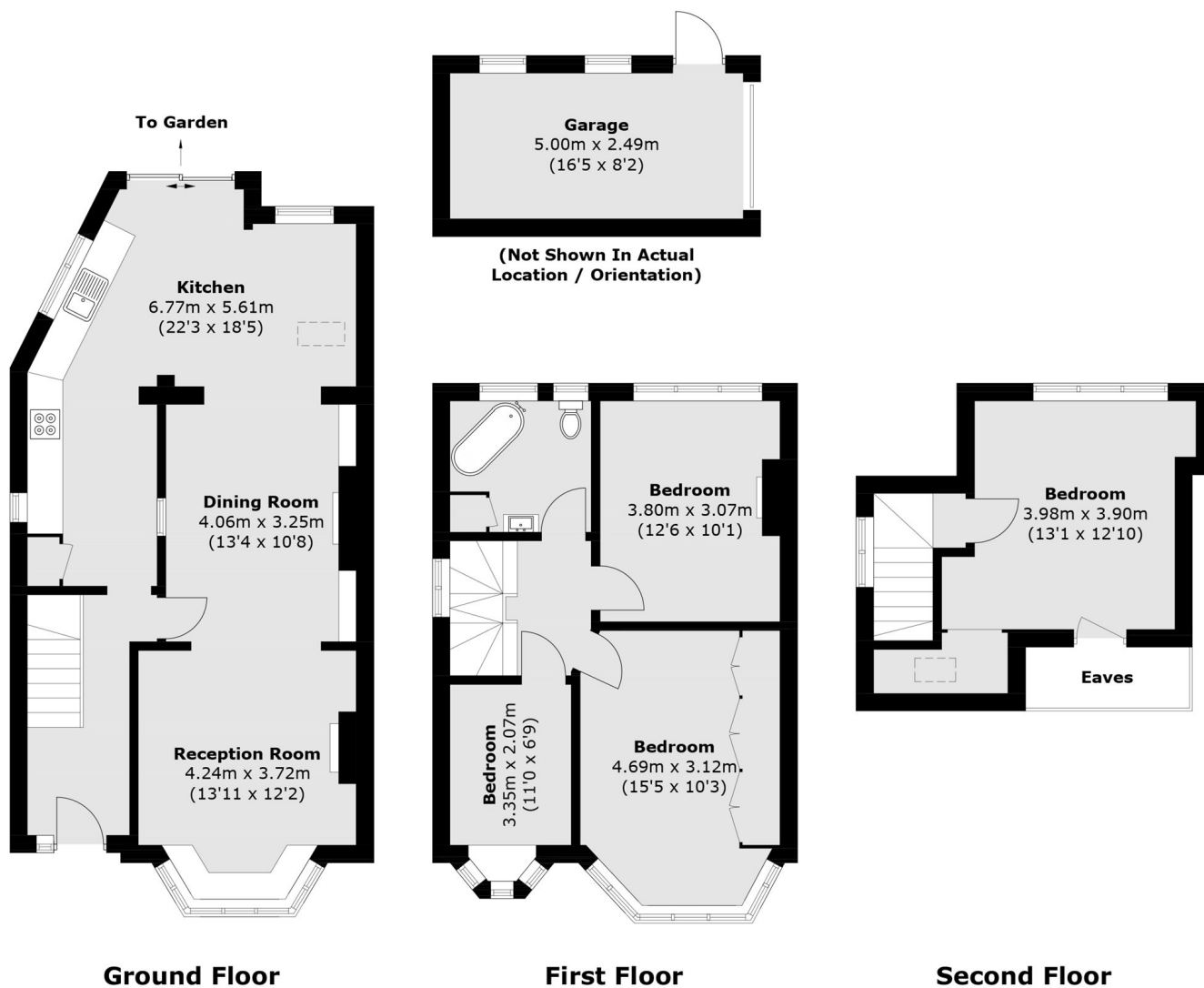
Spacious four-bedroom semi-detached home ideally located in a quiet cul-de-sac, a few meters away from Chase Bridge School. Twickenham High Street is close by with its vast array of local shops, bars & restaurants, as is Twickenham mainline station which offers fast and frequent city links. The home offers excellent internal space, including three generous-sized double bedrooms and a single fourth bedroom, bright living areas, hardwood flooring, original fireplaces, and double glazed windows throughout. Externally, there is a private driveway, separate garage, and a patio providing immediate practicality with scope to personalise if desired.

Positioned within a highly regarded school catchment and close to green open spaces such as Crane Park and the River Thames, this is a fantastic opportunity for buyers seeking value, location, and potential. Excellent road links via the A316 road, provide easy access to the M3 & Heathrow Airport - making it perfect for commuters and investors

### Features

- Four Bedrooms
- Semi-Detached
- Separate Garage & Private Driveway
- West Facing Garden
- Great School Catchment
- Excellent Transportation Links

# Kendrey Gardens, Twickenham, TW2



Approx Internal Area: 126.7 sq. m (1,363.7 sq. ft)  
(Excluding Eaves)  
Garage: 12.6 sq. m (135.6 sq. ft)