



Saritor Croft
, Leighton Buzzard, LU7 9SJ

£1,700 PCM




WATSONS
LETTING SINCE 1961

Saritor Croft

, Leighton Buzzard, LU7 9SJ

Watsons are delighted to offer for let this well presented and spacious 4 bedroom semi-detached Town House on the popular Roman Gate development. The accommodation comprises: Entrance hallway, cloakroom / wc, well fitted kitchen with appliances, lounge with double French doors, stairs to the first floor, two bedrooms and family bathroom, stairs to top floor with two double bedrooms and ensuite shower room. To the exterior is a rear garden with patio, large detached garage, and driveway parking for 3 cars. The property is offered Unfurnished, and is available beginning of February.

Entrance Hallway

Cloakroom / WC

Kitchen

12'5 (max) x 8'9 (max) (3.78m (max) x 2.67m (max))

Lounge

13'10 x 12'6 (4.22m x 3.81m)

Stairs to First Floor

Bedroom Three

13'9 x 12'7 (4.19m x 3.84m)

Family Bathroom

Bedroom Four

9'6 x 7'1 (2.90m x 2.16m)

Stairs to Top Floor

Bedroom One

13'10 (max) x 12'7 (max) (4.22m (max) x 3.84m (max))

En-Suite Shower Room





Bedroom Two

13'11 (max) x 12'8 (max) (4.24m (max) x 3.86m (max))

Rear Garden

Garage

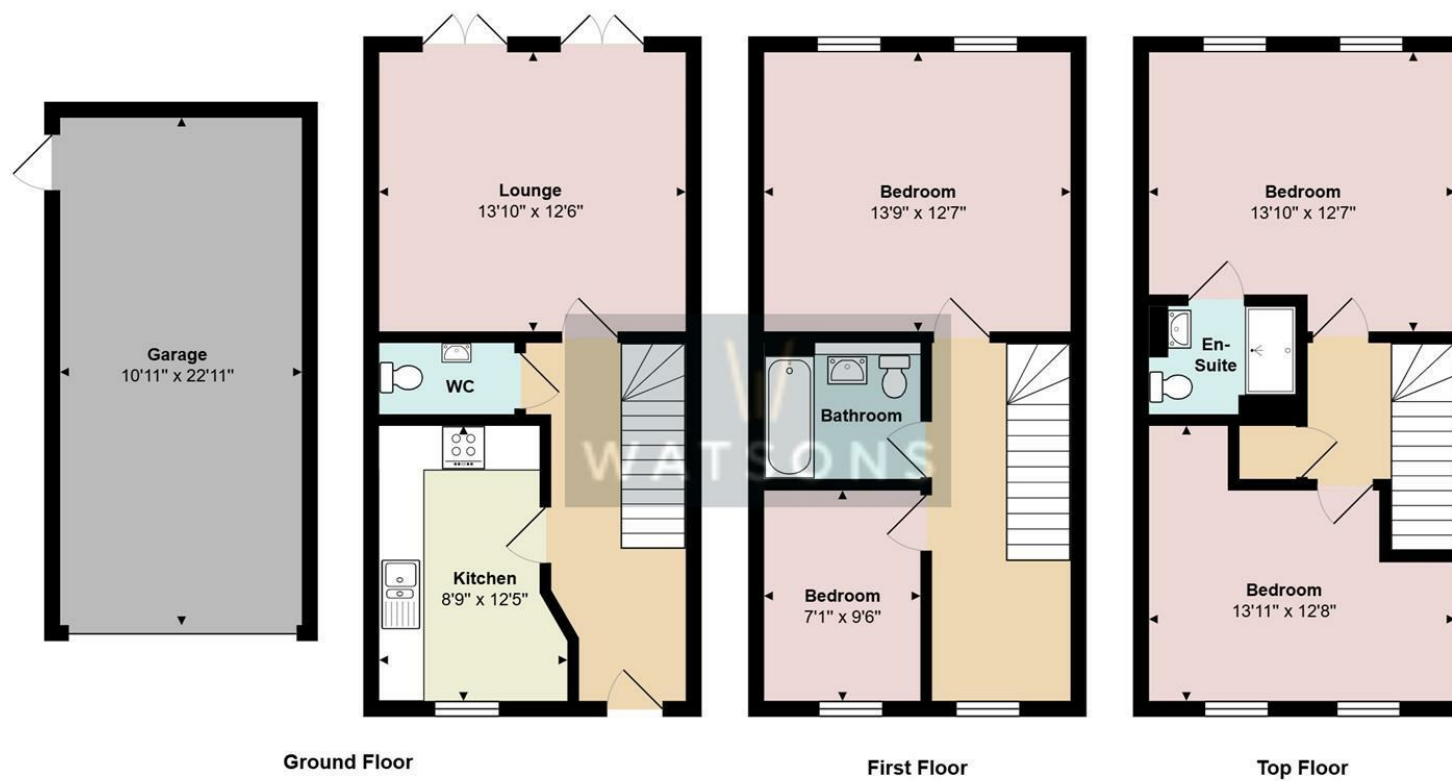
22'11 x 10'11 (6.99m x 3.33m)

Driveway



Measurements and floor plans are approximate and for guidance only. Any prospective Tenant should check all measurements. Floor plan coverings and fitments are for example only and may not represent the true finish of the property.

Floor Plan



Total Area: 1466 ft²

All measurements are approximate and for display purposes only

Viewing

Please contact our Watsons Lettings Office on 01525 378309 if you wish to arrange a viewing appointment for this property or require further information.

17 - 21 Ropa Court, Leighton Buzzard, Bedfordshire, LU7 1DU
Tel: 01525 378309 Email: info@watsonslb.co.uk www.watsonslb.co.uk