



Snowdrop Way, West Meadows, Cramlington, NE23 8FQ

Offers Over £200,000

Harpers POWERED BY **exp** UK
property people

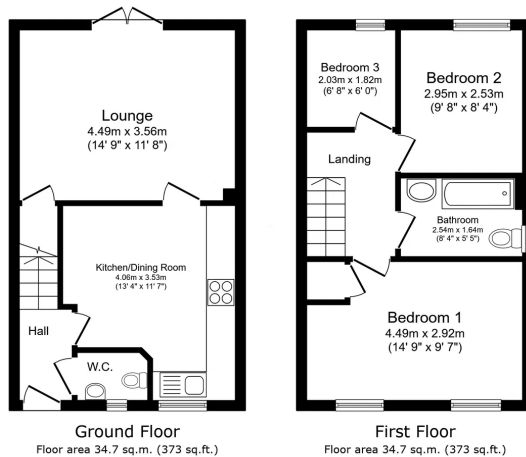
Bedrooms: 3 | Bathrooms: 1 | Receptions: 2

Located on a popular modern development on the Cramlington borders, this attractive three bedroom end of terrace home offers contemporary living, excellent outdoor space and the reassurance of over 6 years remaining on the NHBC warranty. The accommodation includes three well-proportioned bedrooms, a spacious rear aspect living room as well as a modern eat-in kitchen ideal for everyday family life. A ground floor WC adds further convenience. Externally, the property benefits from a good-sized enclosed rear garden, perfect for relaxing or entertaining, along with a double driveway to the front providing excellent off-street parking. Well positioned close to local amenities and transport links, this home is ideally suited to first-time buyers, young families, or those seeking a low-maintenance, move-in-ready property in a well-connected location.

- End Of Terrace Home
- Three Bedrooms
- Eat-In Kitchen
- Spacious Rear Aspect Living Room
- Ground Floor WC
- Good-Sized Enclosed Rear Garden
- Double Driveway To Front
- 6+ Years On NHBC
- Close To Local Amenities & Transport Links
- Modern Development On Cramlington Borders







Total floor area: 69.3 sq.m. (746 sq.ft.)

This floor plan is for illustrative purposes only. It is not drawn to scale. Any measurements, floor areas (including any total floor area), openings and orientations are approximate. No details are guaranteed, they cannot be relied upon for any purpose and do not form any part of any agreement. No liability is taken for any error, omission or misstatement. A party must rely upon its own inspection(s). Powered by www.Propertybox.co

Harpersexp



Harpers Property People

80 Windsor Gardens, Bedlington, NE22 5SY

07813 673 606

ali@harpersproperty.com

<https://harpersproperty.com>

Harpersexp POWERED BY **UK**
property people