



Chantry
& Pewleys



FOR SALE
Chantry
& Pewleys
ESTATE AGENTS
0483 347100

Miller Road
Merrow Park



INTRODUCING

1 Miller Road

MERROW PARK, GUILDFORD,
SURREY, GU4 7DG

Conveniently situated close to the local schools, shops and amenities in Merrow Park, 1 Miller Road is a three-bedroom family home and being offered with no on-going chain. Outside, the private rear garden has patio terrace leading to lawned area. To the front, the driveway leads to a garage with up and over door.



3 BEDROOMS



2 RECEPTIONS



DRIVEWAY & GARAGE

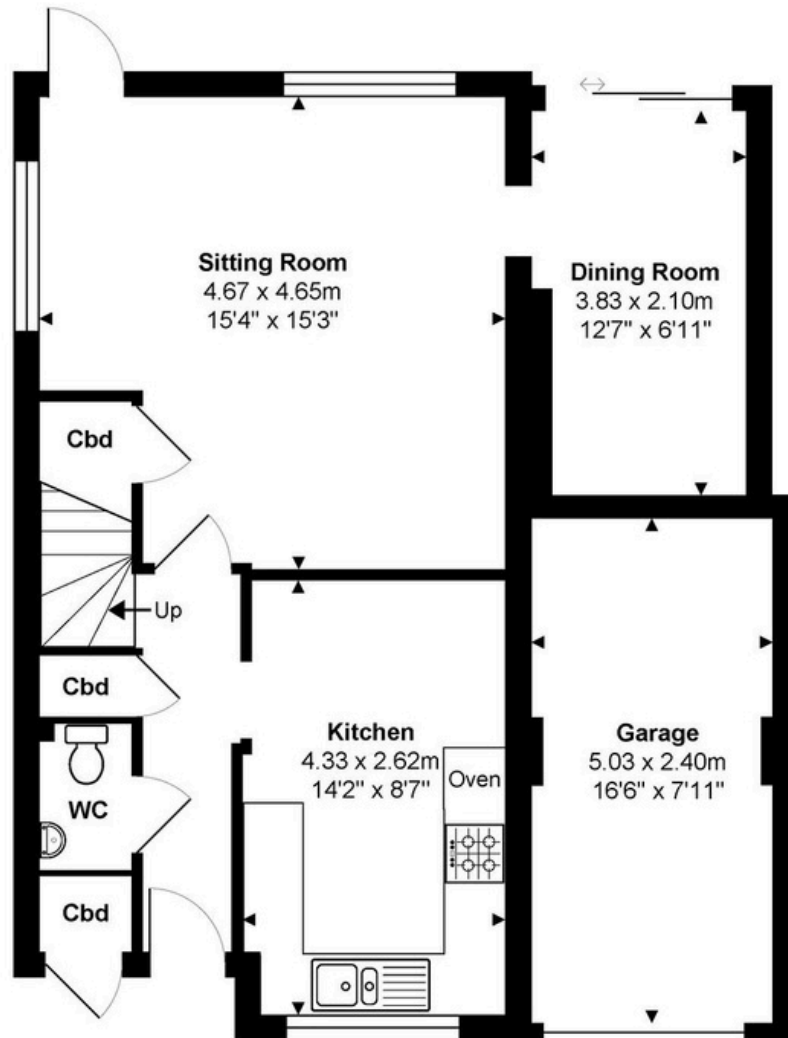


GARDEN

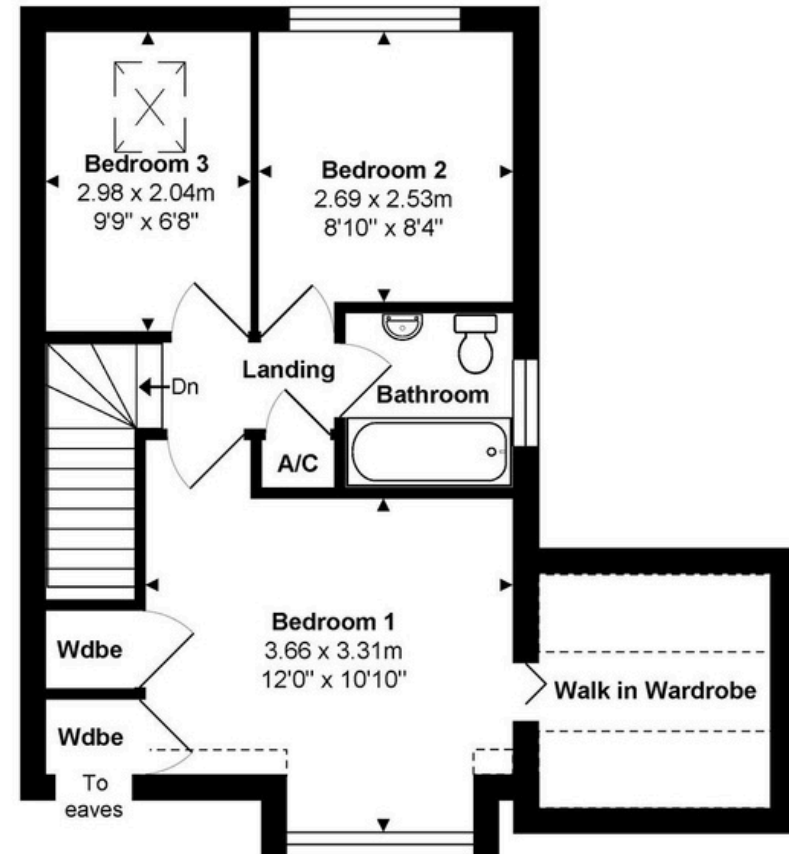
**Tenure: Freehold
Council Tax Band: E
EPC: D**







Ground Floor
Approx. Gross Internal Area 50.7 m² ... 545 ft²



1st Floor
Approx. Gross Internal Area 41.6 m² ... 448 ft²

Total Approx. Gross Internal Area 92.3 m² ... 993 ft² (excluding garage)

All measurements are approximate and for display purposes only. Not to scale. www.energyassessuk.com



Chantries & Pewleys

01483 347100

Merrow@chantriesandpewleys.com

249 Epsom Rd, Merrow, Guildford GU1 2RE