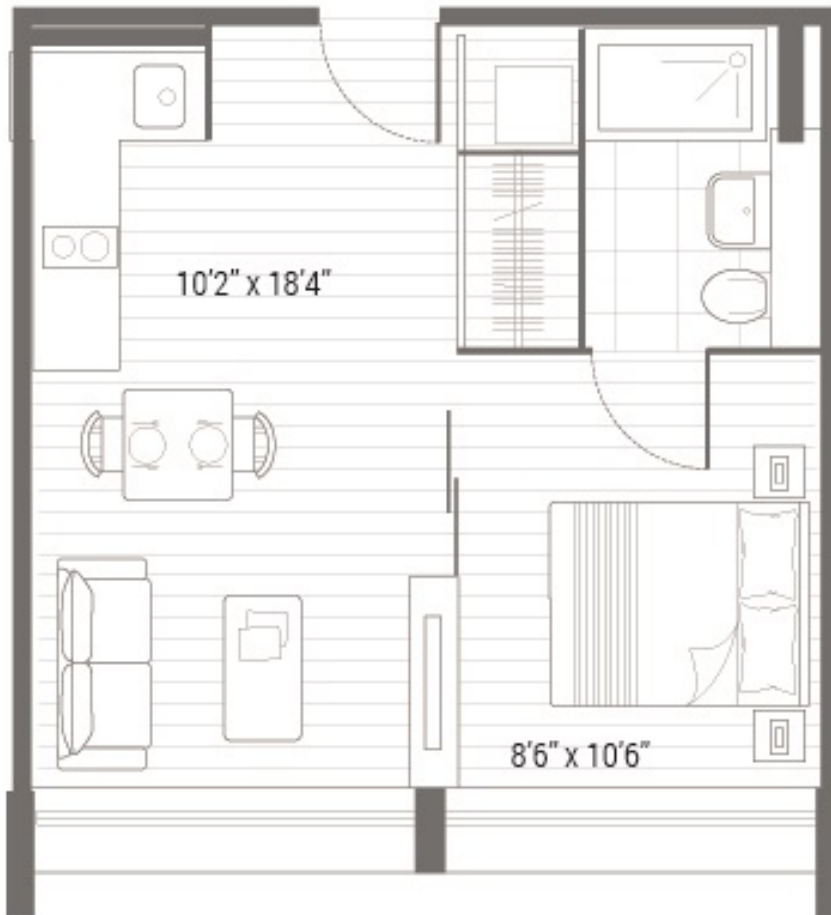




## LAMPTON ROAD, TW3

**£1,550 pcm**

This fantastically situated studio apartment is available NOW. Featuring some of the most premium building materials, Central House is one of the most sought after developments along the Piccadilly Line.||||This spacious property benefits from a generous helping of natural light from the large windows and open-plan layout. Looking outside you can enjoy a



Total area 348 SQ.FT. 32.3 SQ.M.

**LiFE RESIDENTIAL**

203 Trentham Court, Victoria  
Road, London, W3 6BT  
Sales: 020 3668 1112  
Lettings: 020 3668 1111

Energy Rating: C. We aim to make our particulars both accurate and reliable. However they are not guaranteed; nor do they form part of an offer or contract. If you require clarification on any points then please contact us, especially if you're traveling some distance to view. Please note that appliances and heating systems have not been tested and therefore no warranties can be given as to their good working order.