



Viewings

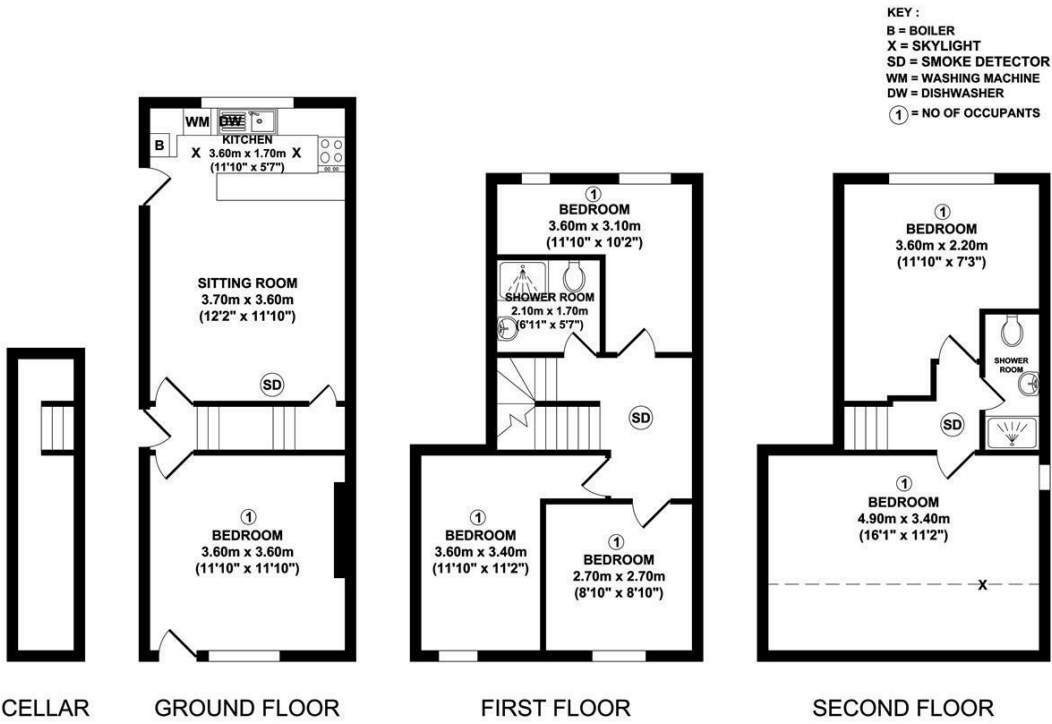
Viewings by arrangement only.
Call 0114 2666300 to make an appointment.

Vendors Comments

Add text here

Energy Efficiency Rating		
	Current	Potential
Very energy efficient - lower running costs		
(92 plus) A		82
(81-91) B		
(69-80) C		63
(55-68) D		
(39-54) E		
(21-38) F		
(1-20) G		
Not energy efficient - higher running costs		
England & Wales		EU Directive 2002/91/EC

116 Pomona Street



Whilst every attempt has been made to ensure the accuracy of the floor plan contained here, measurements of doors, windows, rooms and any other items are approximate and no responsibility is taken for any error, omission, or mis-statement. This plan is for illustrative purposes only and should be used as such by any prospective purchaser.



116 Pomona Street, Sheffield, S11 8JL

£92 Per week

- Six double bedrooms
- Open-plan kitchen & lounge
- Large communal living area with comfy seating & flat-screen TV
- Permit parking available
- Early viewing highly recommended
- Two modern bathrooms each with a shower, toilet and sink
- Fully equipped kitchen
- Bright, modern décor and laminate flooring throughout
- Ideal for both Sheffield Hallam and University of Sheffield students
- EPC Grade D

116 Pomona Street, Sheffield S11 8JL

Looking for a homely, modern student home close to all the action?
This 6-bedroom house, tucked just off Ecclesall Road, offers the perfect mix of comfort, convenience, and great value – ideal for both Sheffield Hallam and University of Sheffield students.

- 6 double bedrooms – each fully furnished with desk, chair, wardrobe & drawers
- 2 modern bathrooms each with a shower, toilet and sink
- Open-plan kitchen & lounge – perfect for group meals and movie nights
- Fully equipped kitchen with dishwasher, tumble dryer, fridge/freezer, oven, microwave, and washing machine
- Large communal living area with comfy seating & flat-screen TV
- Bright, modern décor and laminate flooring throughout
- Permit parking available

Situated just off Ecclesall Road, you'll be:



Council Tax Band: B

