



## The Vale, NW11

£1,750,000

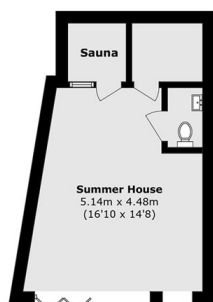
Spacious six bedroom semi-detached home featuring five bathrooms, two kitchens, a reception room, and a stunning open-plan living and kitchen area perfect for modern family living. Complete with a driveway for multiple cars, an outbuilding including a steam room and sauna.

Situated minutes from Child's Hill park and a short walk to Golders Green station (Northern line). The Vale is ideally located for the Northern Line as well as Cricklewood station (Thameslink). Road connections include the A40, A406 and the M1 motorway.

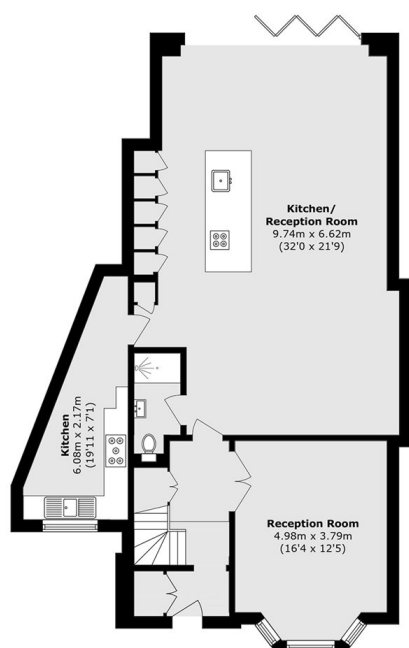
### Features

- Semi-Detached Family Home
- Six Bedrooms
- Five Bathrooms
- Two Kitchens
- Outbuilding
- Large Driveway

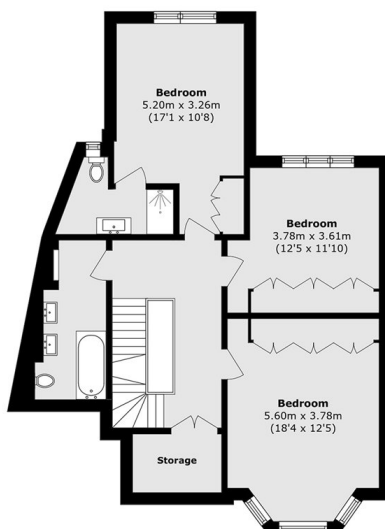
# The Vale, London, NW11



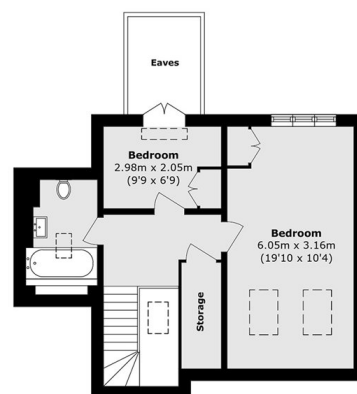
**Ground Floor**



**Ground Floor**



**First Floor**



**Second Floor**

Total area (approx.): 221.9 sq. m (2388.5 sq. ft)  
 Outbuilding area (approx.): 26.0 sq. m (279.8 sq. ft)  
 (Excluding Eaves)