



St. Stephens Crescent, W2

£2,500 Per calendar month

A large one bedroom apartment situated on the ground floor of a period conversion with wood flooring and plenty of storage throughout. The living room has floor to ceiling windows and there is a large separate eat-in kitchen with a large private garden off the back of the apartment.

The flat is ideally located for access to Westbourne Grove with local amenities and its wide variety of bars, restaurants, designer shops and boutiques.

Features

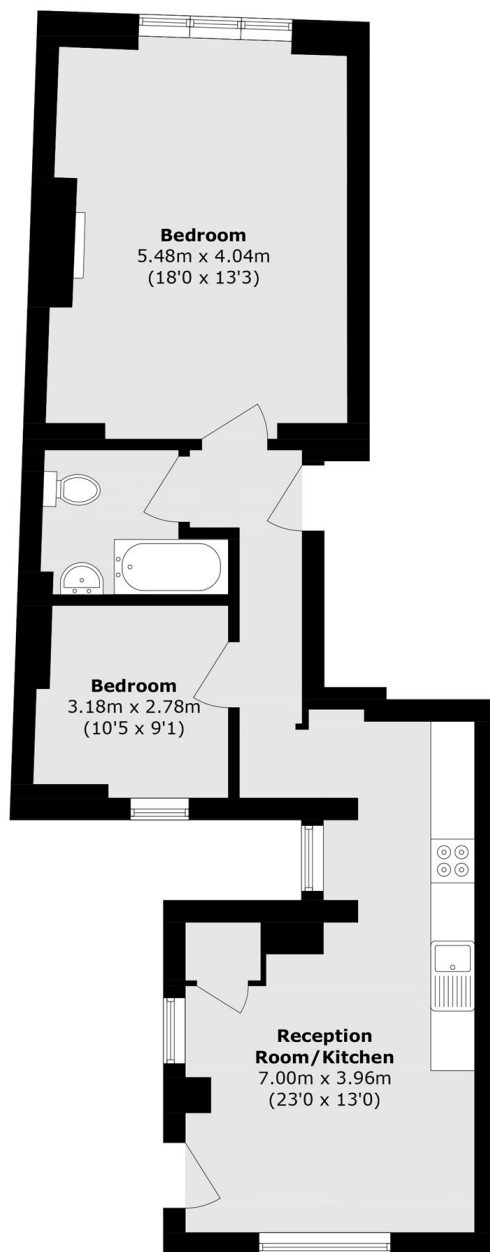
- One Bedroom
- Wooden Floors
- Separate Kitchen
- Private Garden
- Period Conversion
- Close to Westbourne Grove



St. Stephens Crescent, W2



St. Stephens Crescent, LONDON, W2



Ground Floor

Total area (approx.): 62.9 sq. m (677.0 sq. ft)