

£795 pcm

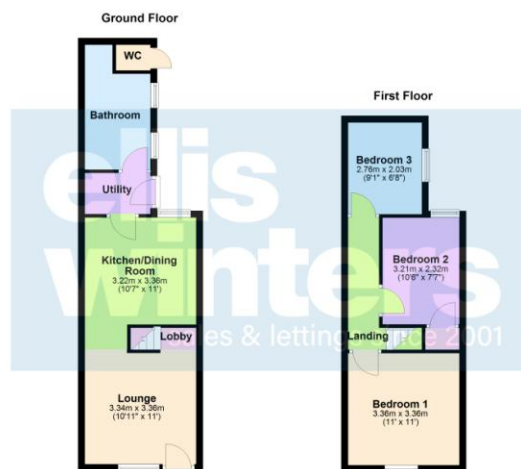
8 York Terrace, Wisbech, PE13 3AZ



To arrange a viewing call us now on 01354 701000

Deposit £917

Located close to the town centre this home is nestled away down a private walkway and boasts a light and airy lounge, kitchen with oven and hob, utility area and ground floor bathroom. To the first floor there are three good size bedrooms and outside there is a low maintenance courtyard. EPC C



# £795 pcm

## 8 York Terrace, Wisbech, PE13 3AZ



Located close to the town centre this home is nestled away down a private walkway and boasts a light and airy lounge, kitchen with oven and hob, utility area and ground floor bathroom. To the first floor there are three good size bedrooms and outside there is a low maintenance courtyard.

### Ground Floor

#### Lounge

3.36m (11') x 3.34m (10'11")

Window to front, radiator, stairs to first floor and landing.



#### Kitchen/Dining Room

3.36m (11') x 3.22m (10'7")

Wall and base units with integral oven, hob and hood, sink unit with mixer tap, window to rear, radiator.

#### Utility

Base units, space for washing machine, door to garden.



#### Bathroom

Fitted with bath with shower over, wash hand basin and WC, gas fired boiler, two windows to side.

### First Floor & Landing

#### Bedroom 1

3.36m (11') x 3.36m (11')

Window to front, radiator.



#### Bedroom 2

3.21m (10'6") x 2.32m (7'7")

Window to rear, radiator, cupboard.

#### Bedroom 3

2.76m (9'1") x 2.03m (6'8")

Window to side, radiator.



Outside there is a small courtyard garden to the rear with outside WC.

### Freehold

Council tax band A

ellis winters 52 High Street, March, Cambridgeshire, PE15 9JR

Tel: 01354 701000 Email: [info@elliswinters.co.uk](mailto:info@elliswinters.co.uk) [www.elliswinters.co.uk](http://www.elliswinters.co.uk)