



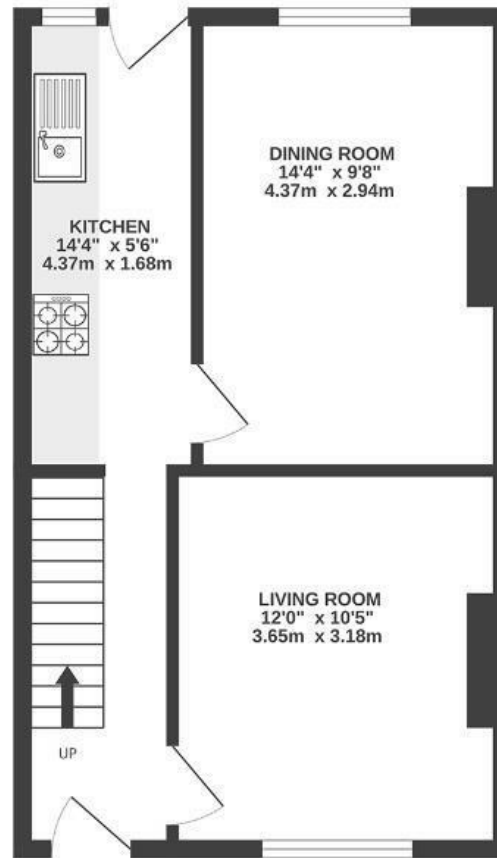
St. Werburghs Park

72 ST. WERBURGHS

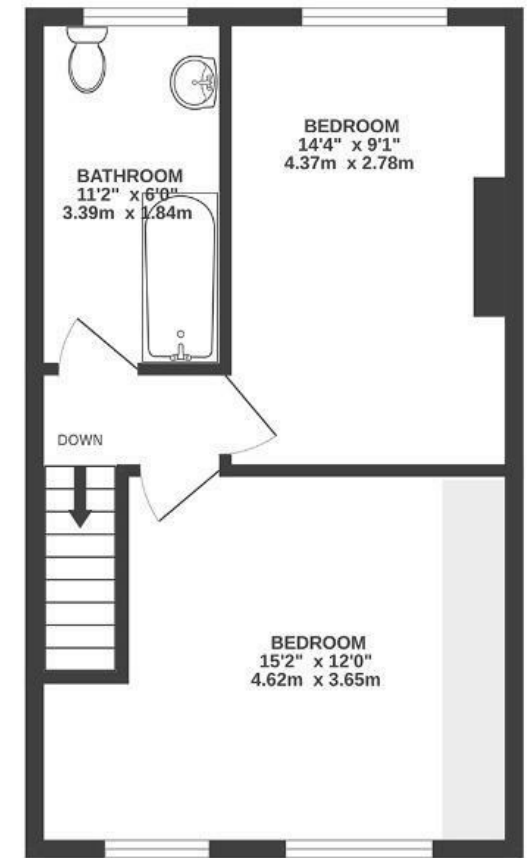
APPROXIMATE FLOOR AREA
77 SQM / 828 SQFT



GROUND FLOOR
392 sq.ft. (36.4 sq.m.) approx.



1ST FLOOR
394 sq.ft. (36.6 sq.m.) approx.



Boardwalk

St. Werburghs , BRISTOL



£450,000



2 Bedrooms



BS2 9YU



1 Bathrooms

"Leaving St Werburghs Park will be leaving with a very heavy heart. I have absolutely loved my time here, it's feels more like living in a village than a city, easy access to green space/ farms and allotments. The people are so friendly and it has a real sense of community. It's always a lovely feeling to get back home, sunny days are spent chilling in the garden or winter months relaxing in the lounge where we have created a comfortable snug."

