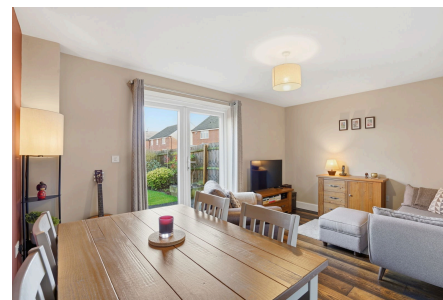


Wilfred Mews, Wythall, Birmingham, B47 6AX

Offers Over £280,000

2 1 1



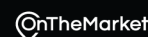
Viewings recommended for this Beautifully Presented Two-Bedroom Family Home in B47, Wythall

Shirley Office:
Black and Golds Estate Agents
117 Stratford Road, Shirley, Solihull, B90 3ND

Wythall Office:
Black and Golds Mortgages
The Old Bakery House, Becketts Farm, Alcester Road, Wythall, B47 6AJ

Black and Golds Letting Agents Limited. Company Registration Number: 10308051. Black and Golds Estate Agents. Company Registration Number: 07930019. Registered Office: 117 Stratford Road, Solihull B90 3ND.
© 2023 Black and Golds Letting Agents Limited. Company Registration Number: 10308051. Black and Golds Estate Agents Copyright: All rights reserved. No content can be reproduced without our prior written consent.

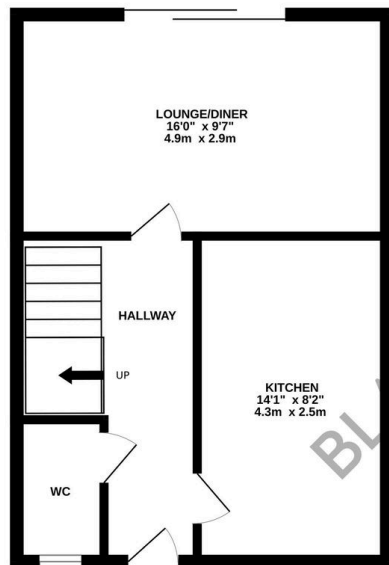
While we as Estate Agents on behalf of the vendors endeavour to ensure the accuracy of property details produced and displayed, we have not tested any apparatus, equipment, fixtures and fittings or services and so cannot verify that they are correct, in working order or fit for the purpose. Neither have we had sight of the legal documents to verify the freehold or leasehold status of any property. A Buyer is advised to obtain verification from their Solicitor and/or Surveyor. A Buyer must check the availability of any property and make an appointment to view before embarking on any journey to see a property. The Vendors have checked and approved these particulars. These particulars are intended to give a fair description, but their accuracy cannot be guaranteed, and are not to be taken as forming any part of a resulting contract. They are issued on the basis the property is still available and on the understanding that all registrations are conducted through the agents.



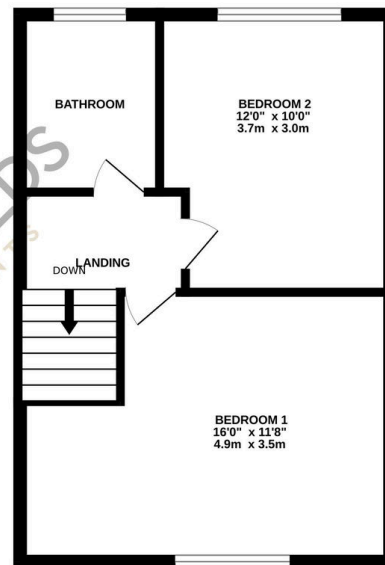
Key Features

- Beautifully presented two bedroom family home
- Living room to rear with doors opening out onto rear garden
- Downstairs W.C
- Master Bedroom with fitted wardrobes
- Rear Garden
- Sought after location in B47
- Fitted kitchen to front aspect
- Two Double Bedrooms
- Off Road Parking
- Viewings highly recommended

GROUND FLOOR



1ST FLOOR



Whilst every attempt has been made to ensure the accuracy of the floorplan contained here, measurements of doors, windows, rooms and any other items are approximate and no responsibility is taken for any error, omission or mis-statement. This plan is for illustrative purposes only and should be used as such by any prospective purchaser. The services, systems and appliances shown have not been tested and no guarantee as to their operability or efficiency can be given.
Made with Metropix 62024