



51 Manor Fields, Great Houghton

Offers in Region of £295,000



51 Manor Fields

Great Houghton, Barnsley

Four bedrooms, three bathrooms and not a thing to fix – just bring your furniture and your friends. Chain-free, seriously stylish, and guaranteed to make your current house look a bit... underwhelming. Council Tax band: D

Tenure: Leasehold

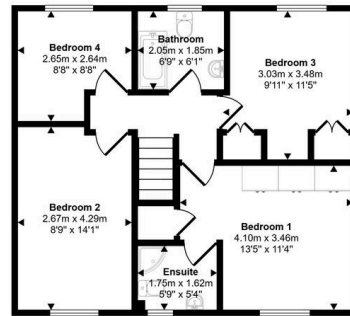
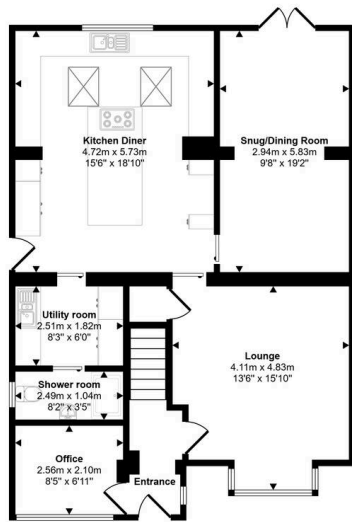
EPC Energy Efficiency Rating: C

EPC Environmental Impact Rating: D

- Fabulous Sized Four Bedroom Home
- Private Garden
- Superb Modern Kitchen – Great for Entertaining
- Ample Parking Off Street
- 3x Modern Bathrooms
- Chain Free Sale
- Built-in wardrobes and storage throughout
- Skylights for abundant natural light
- Well-maintained front and rear gardens with summer house
- Stylish modern decor and wooden flooring



Approx Gross Internal Area
143 sq m / 1538 sq ft



First Floor
Approx 56 sq m / 607 sq ft

Ground Floor
Approx 86 sq m / 931 sq ft

Whilst every attempt has been made to ensure the accuracy of the floor plan contained here, measurements of doors, windows, rooms and any other items are approximate and no responsibility is taken for any error, omission, or mis-statement. The measurements should not be relied upon for valuation, transaction and/or funding purposes. This plan is for illustrative purposes only and should be used as such by any prospective purchaser or tenant.



Aspire Estates

Aspire Properties, Wira Business Park Ring Road - LS16 6EB

0113 8875079

estatesales@aspirepropertygroup.co.uk

www.aspirepropertygroup.co.uk/