



Chesterton Road, Cambridge

A well presented, two bedroom apartment, situated on Chesterton Road with spacious living space and parking. Less than a mile walk in to Cambridge City Centre over picturesque Jesus Green.

£1,850 pcm

Chesterton Road,  
Cambridge, CB4 1ER



A fully furnished, two-bedroom apartment available in an excellent location in Central Cambridge, a stones throw from Jesus Green and Midsummer Common. With spacious accommodation and allocated parking.

Furnished as per the photographs including kitchen utensils, hair dryer & iron. The kitchen is supplied with fridge/freezer, washer/dryer, dishwasher, hob and oven and small appliances.

Tenancy available for a minimum of 3 months.

Deposit: One months' rent. Utility bills are in addition to the monthly rent.

Available December 2025.

UK Power networks suggest the electricity and gas is currently supplied by:  
EDF Energy

Ofcom suggests the maximum broadband speed is: 1000mbps. Gov.uk suggests the property is a medium to very low flood risk.

The apartment is located in a small development on Chesterton Road, near to Mitchams Corner and it's excellent local facilities. There are a variety of shops, pubs, restaurants and other amenities all in walking distance.

The city centre is just a few minutes away on bike, as is the Science Park and Cambridge North train station.







68 sqm / 739 sqft

---

2 bed, 1 bath, 1 recep

---

EPC - B / 83

---

Council tax band - D

---

Gas central heating

---

Allocated parking

---

Furnished

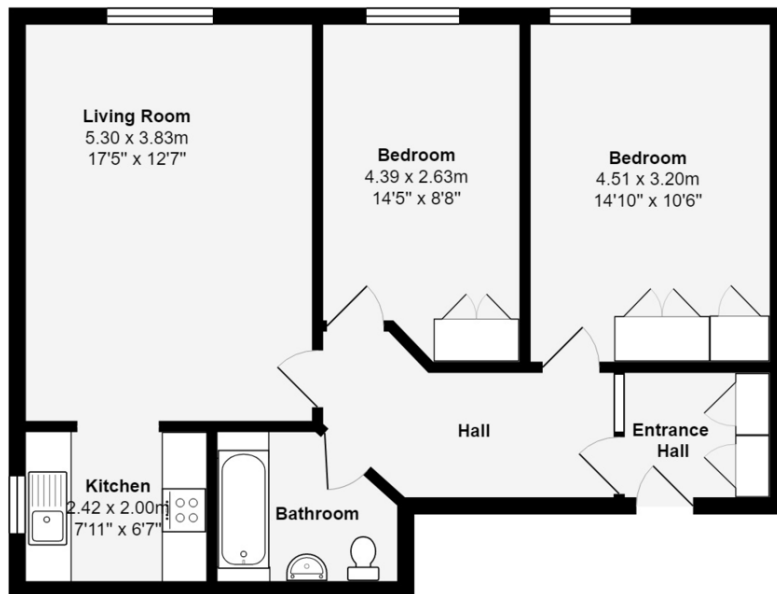
---

Available December 2025

---



## The Hamiltons



Total Area: 68.6 m<sup>2</sup> ... 739 ft<sup>2</sup>

All measurements are approximate and for display purposes only

Plan prepared by: [charlesjharrison.co.uk](http://charlesjharrison.co.uk)



The apartment is located in a small development on Chesterton Road, near to Mitchams Corner and it's excellent local facilities. There are a variety of shops, pubs, restaurants and other amenities all in walking distance. The city centre is just a few minutes away on bike, as is the Science Park and Cambridge North train station. There are several schools in the area including Milton Road Primary School and Chesterton Community College.

COOKE  
CURTIS  
& CO