



Price
£200,000

Leasehold

2x  2x  1x 

**Toad Hall Crescent,
Chattenden, Rochester,
Kent, ME3**

OVER 60?

Secure this property
for up to **59% less!**

Wards
Helping you move forwards



Main features

- Ground floor flat with allocated parking space
- Sought after village location and in a cul-de-sac
- Easy access onto the M2
- En-suite bathroom
- No onward chain; great for first time buyers

Accommodation

GROUND FLOOR

Hallway

Bedroom 1: 13'5 x 10'3 (4.09m x 3.13m)

En-Suite Bathroom

Bedroom 2: 10'4 x 8'6 (3.15m x 2.59m)

Kitchen/Living Area: 18'7 x 10'4 (5.67m x 3.15m)

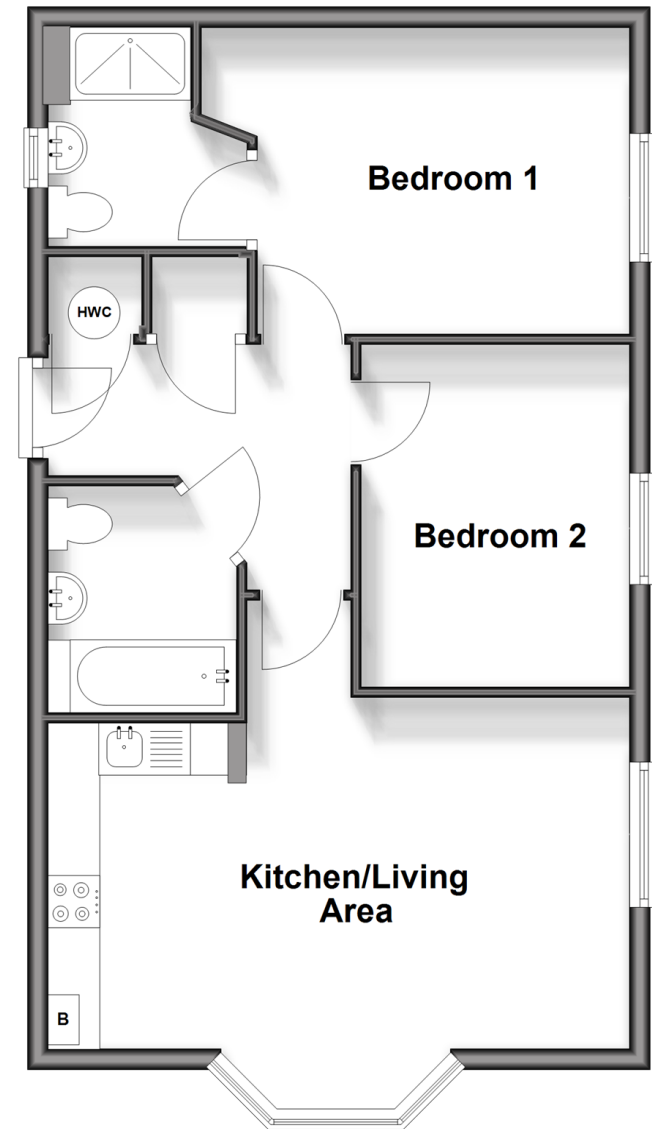
Bathroom

OUTSIDE

Allocated Parking Space

Ground Floor

Approx. 55.4 sq. metres (596.8 sq. feet)



Call Strood - 01634 716597 ■ wardsof Kent.co.uk

- Legal advice should be taken to verify fixtures/fittings, planning, alterations and/or lease details
- Appliances & services are untested, dimensions are approximate and floor plans are not to scale
- Through a Homewise Home For Life Plan people aged 60+ can secure this property for up to 59% less, by purchasing a Lifetime Lease.



11846476/20250513/BK/CM