



Commercial Street, E1

£399,000

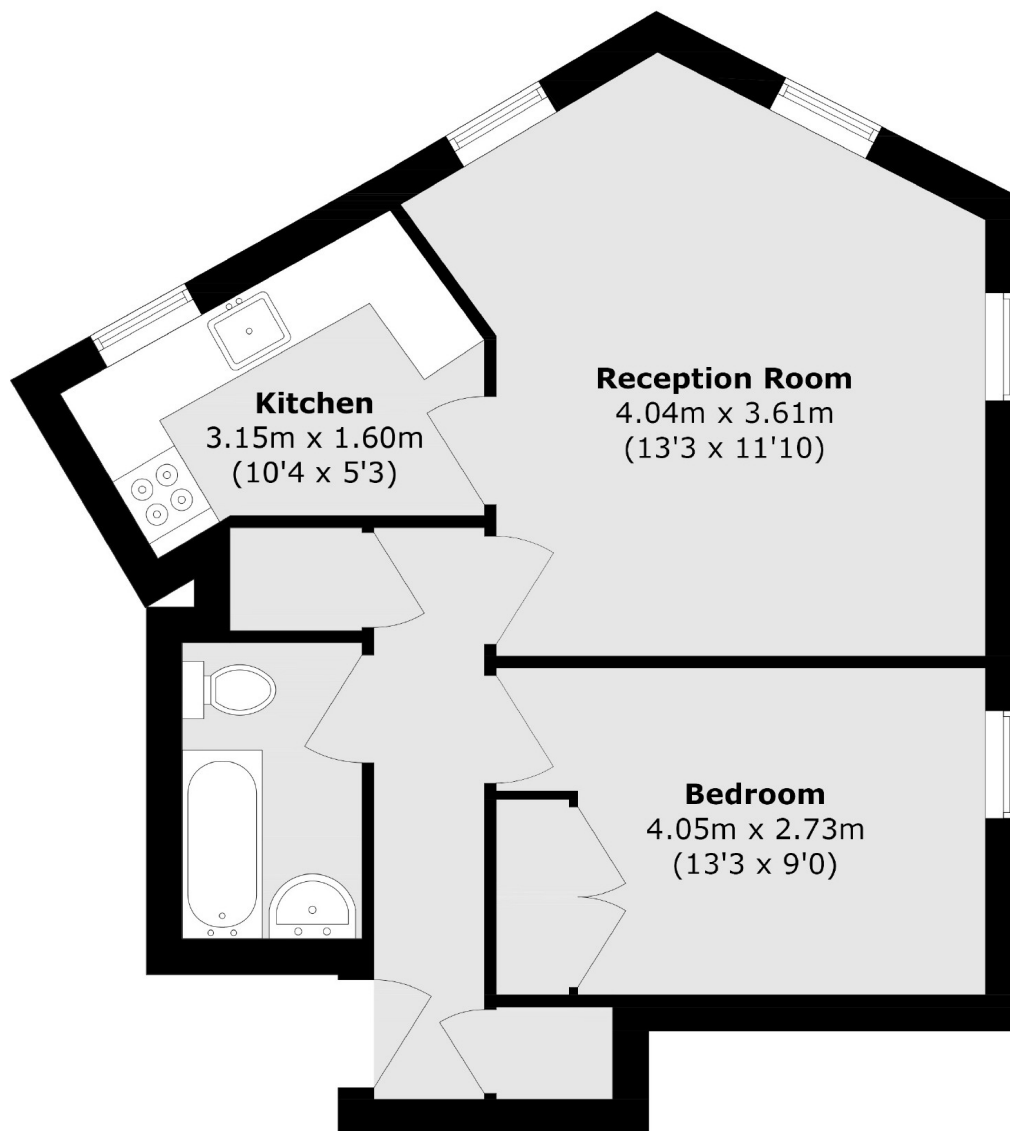
A one, double bedroom apartment, central to Shoreditch with views of Spitalfields market. This corner property offers a semi-open plan kitchen/reception with dual aspect sash windows, which provide plenty of natural light, and wooden flooring. The double bedroom provides built-in storage, and there is additional storage space in the hallway.

Located in the heart of Spitalfields, this property offers easy access to a number of the most famous restaurants, bars and shopping spots in London. Nearby transport links include Shoreditch High Street (Windrush line) and Liverpool Street (Elizabeth, Weaver, Central, Circle, Hammersmith & City lines), as well as multiple bus routes through the City.

Features

- One Double Bedroom
- Private Off-Street Parking
- Spitalfields Location
- Top Floor
- Sash Windows
- Period Conversion

Commercial Street, London, E1



Total area (approx.): 47.9 sq. m (515.5 sq. ft)