



## Capital Interchange Way, Brentford TW8

Guide price £400,000 Leasehold





# Description

Verdo is an impressive collection of apartments in a blossoming new neighbourhood. Be in the heart of a community-centric destination and look forward to bustling weekend markets, cosy mornings in your local café, social nights in the residents' lounge and serene evening walks in the gardens.

The development is located at the heart of Brentford and puts you in touching distance of some of London's best-loved highstreets for some all-important retail therapy with Chiswick and Richmond High Streets located close by. Kew Bridge station is just a few minutes' walk away and Gunnersbury tube station only a 10 minute stroll, Verdo has great transport links connecting you to central London in just 24 minutes.

Ground rent: Peppercorn  
Service Charge - £2,713.41 (£5.11psf pa)  
Leasehold: 249 Years  
EPC rating: B  
Council tax band: C



- 24 Hour Concierge
- Open plan kitchen/reception room
- Residents' only Co-working Space
- Residents' only Gym, Cinema, Podium Gardens
- 24 Hour Concierge

Close proximity to train and tube stations

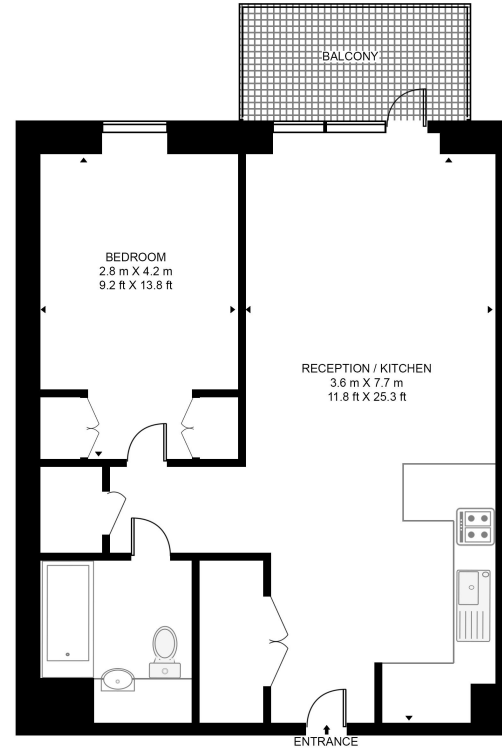
EPC: B

# Floorplan

531 sq ft | 49 sq m

## JASMINE HOUSE, VERDO

APPROXIMATE GROSS INTERNAL FLOOR AREA 531 SQ.FT (49.3 SQ.M)



SEVENTH FLOOR



This floor plan has been defined by the RICS Code of Measurement. This floor plan and all others are for approximate representative purposes only and upon usage is agreed to as such by the client.  
WWW: [hdvirtualart.com](http://hdvirtualart.com) | TEL: 0203.974.1567 | EMAIL: [info@hdvirtualart.com](mailto:info@hdvirtualart.com)

Kew Bridge  
12 Capital Interchange Way,  
London TW8 0SP  
020 3147 1880  
[lettingskewbridge@jll.com](mailto:lettingskewbridge@jll.com)

*Urban living, your way.*

[jll.co.uk/residential](http://jll.co.uk/residential)

© 2019 Jones Lang LaSalle IP, Inc. All rights reserved. All information contained herein is from sources deemed reliable; however, no representation or warranty is made to the accuracy thereof.

