



Crown Dale, SE19 | £375,000

020 8702 9333

[crystalpalace@pedderproperty.com](mailto:crystalpalace@pedderproperty.com)

**pedder**  
We live local





## In General

- Two double bedrooms
- Balcony
- No onward chain
- Lift

## In Detail

A spacious two double bedroom purpose-built apartment forming a popular modern executive development opposite Norwood Park.

The double aspect reception room extends to 22ft and is socially open-plan to a well-designed kitchen with integrated appliances and direct access to a balcony with a sunny southerly aspect. The bathroom is modern with clean white sanitary ware and a heated towel rail, whilst further benefits include fitted hallway storage and a lift.

Crown Dale is primarily served by Gipsy Hill, West Norwood, and Crystal Palace rail links. A wealth of shopping and leisure amenities are nearby at the Crystal Palace Triangle, also West Norwood High Street and Gipsy Parade.

No onward chain.

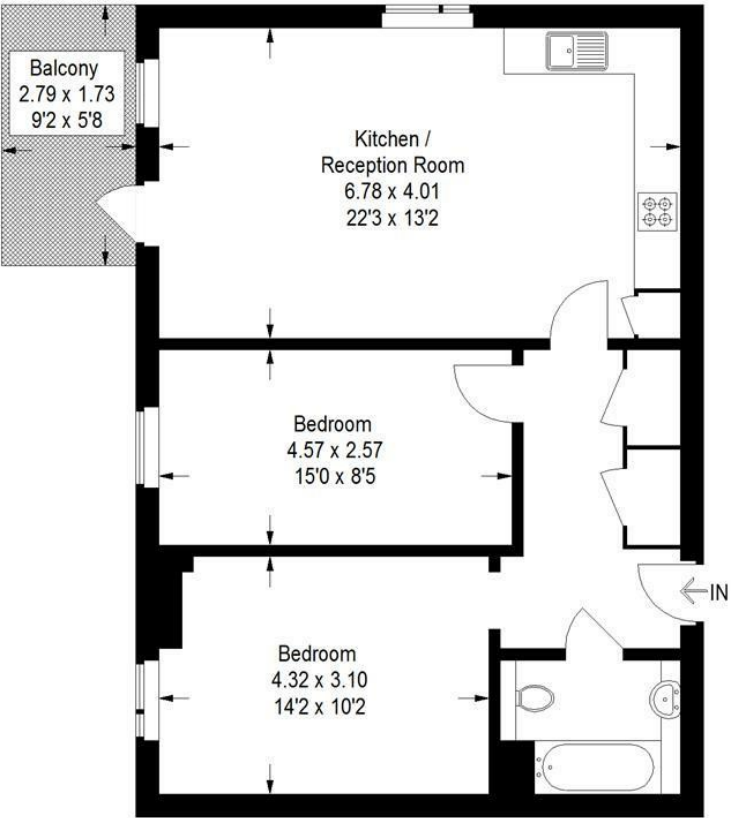
EPC: B | Council Tax Band: C | Lease: 107 years remaining | SC: £2,964 pa | GR: £260 pa | BI : £432.78pa



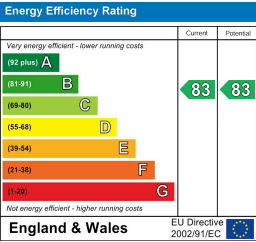
# Floorplan

Crown Dale, SE19

Approximate Gross Internal Area  
68.3 sq m / 735 sq ft



Copyright www.pedderproperty.com © 2024  
These plans are for representation purposes only as defined by RICS - Code of Measuring Practice. Not drawn to Scale. Windows and door openings are approximate. Please check all dimensions, shapes and compass bearings before making any decisions reliant upon them.



Pedder Property Ltd trading as Pedder for themselves and for the vendor/landlord of this property whose agents they are, give notice that (1) these particulars do not constitute any part of an offer or contract, (2) all statements contained within these particulars are made without responsibility on the part of Pedder or the vendor/landlord, (3) whilst made in good faith, none of the statements contained within these particulars are to be relied upon as a statement of representation or fact, (4) any intending purchaser/tenant must satisfy him/herself by inspection or otherwise as to the correctness of each of the statements contained within these particulars, (5) the vendor/landlord does not make or give either Pedder or any person in their employment any authority to make or give representation or warranty whatsoever in relation to this property.