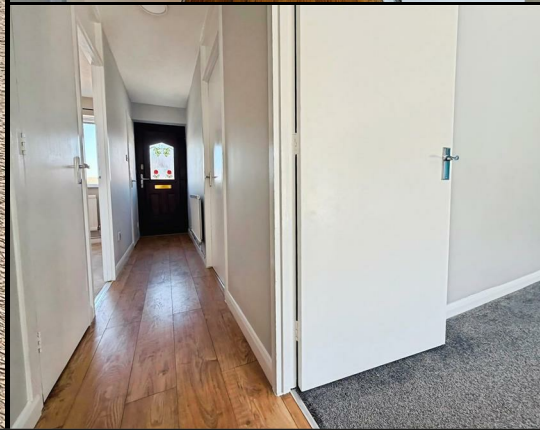


RESIDENTIAL SALES  
LETTINGS & PROPERTY  
MANAGEMENT

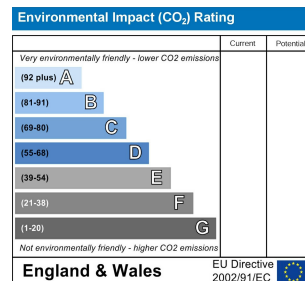
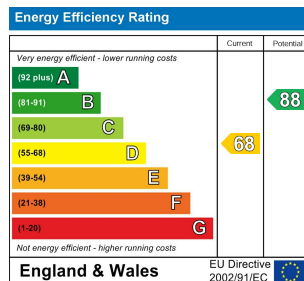
COWLING  
& PAYNE



St. Michaels Close, Chelmsford  
£1,150 Per Month

**\*\*CPO9483 ONLINE ENQUIRIES ONLY\*\*** COWLING & PAYNE ARE DELIGHTED TO OFFER THIS TWO BEDROOM BUNGALOW WITH A GARAGE IN THE CHARMING VILLAGE OF LATCHINGDON. THE PROPERTY INCLUDES TWO BEDROOMS, A SPACIOUS LIVING AREA, AS WELL AS GARAGE WITH OFF STREET PARKING INFRONT. THE PROPERTY BOASTS A SIZEBALE GARDEN WITH PATIO SPACE.

COUNCIL TAX BAND C  
 EPC RATING D  
 AVAILABLE JULY.



RESIDENTIAL SALES  
LETTINGS & PROPERTY  
MANAGEMENT

# COWLING & PAYNE

You may download, store and use the material for your own personal use and research. You may not republish, retransmit, redistribute or otherwise make the material available to any party or make the same available on any website, online service or bulletin board of your own or of any other party or make the same available in hard copy or in any other media without the website owner's express prior written consent. The website owner's copyright must remain on all reproductions of material taken from this website.

2-4 Runwell Road, Wickford, Essex, SS11 7AB  
Telephone: 01268 730707 | Fax: 01268 730737  
[info@cowlingandpayne.co.uk](mailto:info@cowlingandpayne.co.uk)  
[www.cowlingandpayne.co.uk](http://www.cowlingandpayne.co.uk)

