



SUSAN METCALFE  
RESIDENTIAL



## Oakfield Street, Chelsea, SW10

£4,950,000

Bedrooms	5
Bathrooms	5
Surface	2533 sqft
Tenure	Freehold
Outdoor Space	Garden
Parking	None
Council Tax	Council Tax Band: G (RBKC)

### IMPRESSIVE 5-BEDROOM FAMILY HOUSE

Set on a peaceful, tree-lined residential street in the heart of Chelsea, this exceptional five-bedroom house offers beautifully designed family living across 4 expansive floors. Presented in immaculate condition throughout, the property has been interior-designed to showcase generous proportions, high ceilings and a high-end contemporary finish.

The house features a superb balance of formal and informal living spaces, including a vast lateral drawing room and dining room ideal for entertaining, alongside a stylish kitchen/family room that opens directly onto a west-facing garden. Additional outdoor space includes a private patio and two terraces.

Accommodation is both luxurious and practical, with 5 bedrooms, 3 bathrooms and 3 en-suite shower rooms, complemented by 2 guest WCs and a well-appointed utility room. The stunning top-floor suite is a standout feature, offering a generous principal bedroom with a walk-in Italian shower and a dedicated office area.

**This is a rare opportunity to acquire a substantial, turnkey family house in one of Chelsea's most desirable residential area**

#### Features

entrance hall, reception room, dining room, kitchen/family room, 5 bedrooms, 3 bathrooms, 3 en-suite shower rooms, 2 guests wcs, utility room, patio, 2 terraces, garden.

10 HOLLYWOOD ROAD CHELSEA SW10 9HY

020 7581 3349

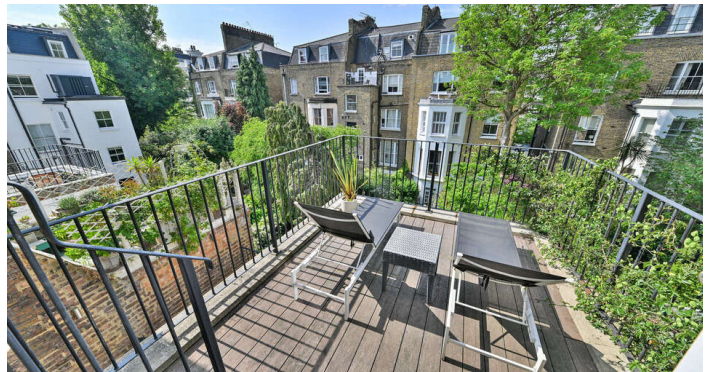
www.susanmetcalfe.com

info@susanmetcalfe.com





SUSAN METCALFE  
RESIDENTIAL



10 HOLLYWOOD ROAD CHELSEA SW10 9HY  
020 7581 3349 www.susanmetcalfe.com info@susanmetcalfe.com





SUSAN METCALFE  
RESIDENTIAL

## Oakfield Street, SW10

APPROX. GROSS INTERNAL AREA \*  
2533 Sq Ft - 235.32 Sq M  
(Excluding Outdoor Storages)

Outdoor Storages  
36 Sq Ft - 3.34 Sq M

TOTAL APPROX. GROSS INTERNAL AREA \*  
2569 Sq Ft - 238.66 Sq M

This floorplan is for GUIDANCE ONLY and NOT FOR VALUATION purposes.



ALEX WINSHIP  
Photography  
alexwinship.com

\* Floorplan for guidance only, not to scale or valuation purposes. It must not be relied upon as a statement of fact. All measurements and areas are approximate and have been prepared in accordance with the current edition of the RICS Code of Measuring Practice.



10 HOLLYWOOD ROAD CHELSEA SW10 9HY

020 7581 3349 www.susanmetcalfe.com info@susanmetcalfe.com



