



GEOFFREY ROAD, SE4

£500,000

Two double bedrooms
Refurbished and remodelled
Double reception
Two bathrooms
South facing garden
Energy rating: c

@marshandparsons
marshandparsons.co.uk

MARSH &
PARSONS



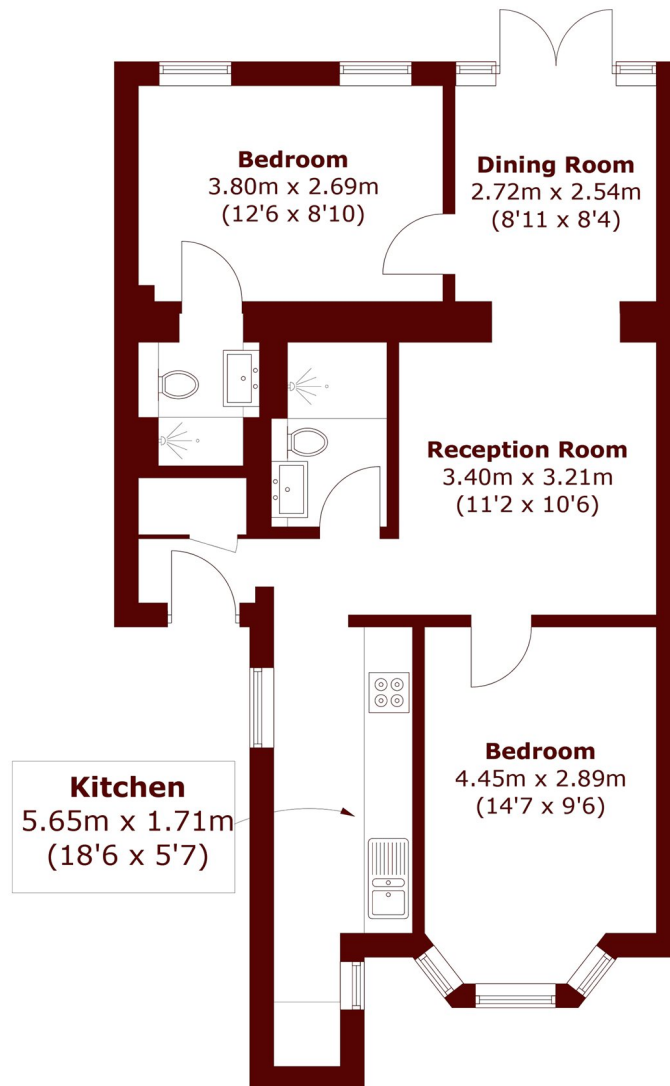
ABOUT THE PROPERTY

A ground floor two double bedroom, two bathroom apartment of circa 700 Sq. Ft that benefits own front door and direct access to the south facing communal garden. This beautifully presented home features a 20' double reception, and was recently refurbished and remodelled and is offered in 'just move in' condition.

Located in the Brockley conservation area, only a couple of hundred metres from the overground.



STEP INSIDE GEOFFREY ROAD



Total area (approx.): 64.2 sq. m (691.0 sq. ft)

Brockley
020 8629 8164

Energy Rating: C We aim to make our particulars both accurate and reliable. However, they are not guaranteed; nor do they form part of an offer or contract. If you require clarification on any points then please contact us, especially if you're traveling some distance to view. Please note that appliances and heating systems have not been tested and therefore no warranties can be given as to their good working order

**MARSH &
PARSONS**