







## 28 Jasper Avenue

Hasland • Chesterfield • S41 0FZ

£240,000

Welcome to this modern three double-bedroom, three-storey semi-detached home, situated in the popular area of Hasland set back off the road with a green space opposite. The property benefits from an excellent range of nearby amenities, including independent shops, cafés, supermarkets, and everyday conveniences, while Chesterfield town centre is just a short drive away. The area is particularly well suited to families, with a selection of well-regarded schools within easy reach. Excellent transport links provide convenient access to major road networks, the M1 motorway, Chesterfield train station, and regular bus services. For those who enjoy the outdoors, Eastwood Park and Queen's Park are both nearby, while the Peak District is easily accessible. This property offers an ideal home for couples and growing families alike. The property is entered via a front porch leading into the living room. This well-proportioned front-facing reception room benefits from a useful storage cupboard and provides a comfortable living space. From here, the accommodation flows into an inner hallway, which provides access to the staircase and a convenient ground floor WC. To the rear of the property is the kitchen diner, fitted with a modern U-shaped range of units incorporating integrated appliances alongside space for freestanding appliances. There is also room for a dining area, creating a practical space for everyday living and entertaining. Double doors open directly onto the rear garden. The first floor accommodates two of the three bedrooms and the family bathroom. Both bedrooms are doubles, with bedroom two positioned at the front of the property and bedroom three overlooking the rear garden. The bathroom is fitted with a modern part-tiled three-piece suite comprising a bath with overhead shower, wash basin, and WC. Occupying the second floor is the principal bedroom suite. This spacious front-facing double bedroom benefits from useful storage and a modern part-tiled three-piece ensuite shower room, fitted with a shower cubicle, wash basin, and WC. Externally, the rear garden has been attractively landscaped and well maintained. It begins with a decked seating area, with steps leading down to two lawned sections separated by a pebbled pathway. Further steps lead to a patio area positioned at the rear of the garden. To the front of the property, a side driveway provides off-road parking for multiple vehicles as well as plenty of visitor parking outside on the private road.





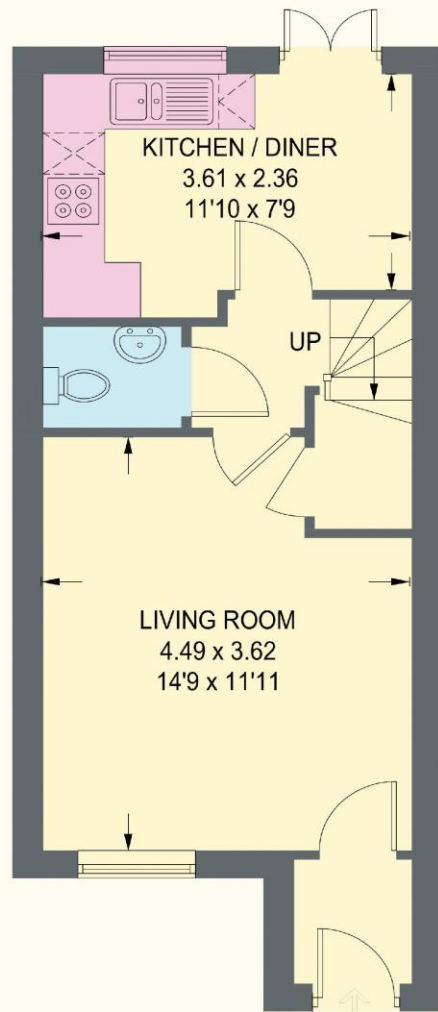
- Modern Three Double Bedroom Semi Detached House
- Three Storey - Ideal for Couples & Growing Families
- Good Sized Front Facing Living Room
- Modern U Shaped Kitchen Diner

- Two First Floor Double Bedrooms
- Spacious Principle Second Floor Bedrooms
- Modern Family Bathroom & Ensuite
- Landscaped Rear Garden
- Driveway Parking for Multiple Vehicles
- Council Tax Band B/EPC Rating B

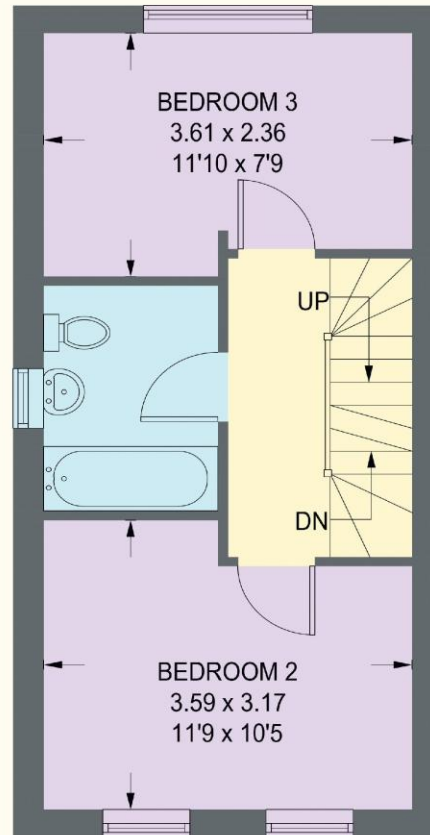


# 28 JASPER AVENUE

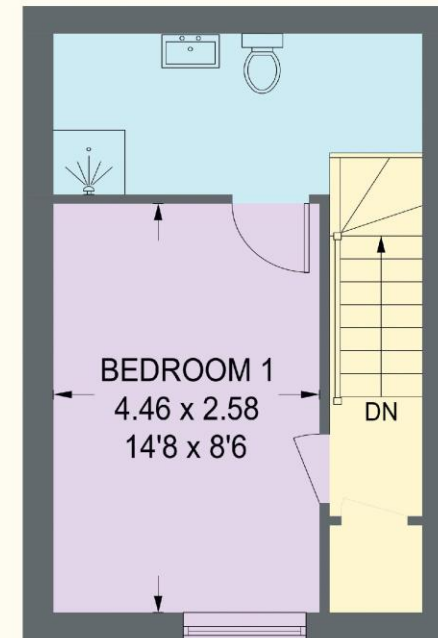
APPROXIMATE GROSS INTERNAL AREA = 84.2 SQ M / 906 SQ FT



**GROUND FLOOR**  
32.3 SQ M / 348.1 SQ FT



**FIRST FLOOR**  
30.5 SQ M / 328.7 SQ FT



**SECOND FLOOR**  
21.3 SQ M / 229.2 SQ FT

Illustration for identification purposes only, measurements are approximate, not to scale. (ID1313355)



haus

31 West Bars, Chesterfield, S40 1AG  
chesterfield@haushomes.co.uk haushomes.co.uk

01246 380 535