



**Ridge Crest, Enfield, EN2 8JX**

**welcome to**  
**Ridge Crest, Enfield**

Barnfields are delighted to offer for sale this three bedroom semi-detached family house, in this most sought after location just off Enfield Ridgeway and within close proximity of The Wren Academy Secondary School, One Degree Primary School, Chase Farm Hospital and Gordon Hill Overground Station (Moorgate Line).

The property benefits from a large south westerly facing rear garden, off-street parking and scope to extend (subject to relevant planning permissions).



### **Hallway**

Wood flooring, radiator, understairs cupboard.

### **Downstairs WC**

Low level WC, wall mounted hand basin, tiled floor, double glazed window to side.

### **Through Lounge**

30' x 12' 10" ( 9.14m x 3.91m )

A spacious room with wood flooring, double glazed bay window to front, radiator, sliding double glazed doors to rear, brick fireplace with inset gas fire.

### **Kitchen**

13' 11" x 6' 8" ( 4.24m x 2.03m )

Range of fitted wall and base units with toning worktops, sink and drainer, space for an electric cooker, fridge/freezer and plumbing for a washing machine, double glazed windows to side and rear, wood flooring, double glazed door to garden.

### **First Floor**

#### **Landing**

Fitted carpet, double glazed window to side, loft hatch opening to loft storage area.

#### **Bedroom One**

17' x 11' 7" ( 5.18m x 3.53m )

Fitted carpet, double glazed bay window to front, run of fitted wardrobes, radiator.

#### **Bedroom Two**

12' 5" x 11' 7" ( 3.78m x 3.53m )

Fitted carpet, double glazed window to rear, radiator.

#### **Bedroom Three**

10' 2" x 7' 1" ( 3.10m x 2.16m )

Fitted carpet, double glazed window to front.

#### **Bathroom**

Panelled bath with shower over and glass screen, low level WC, pedestal wash hand basin, two double glazed windows to side and rear, chrome heated towel rail, part tiled walls, tiled floor.

#### **Outside**

##### **Rear Garden**

A large landscaped south westerly facing rear garden (in excess of 100ft) with tiered paved patio area stepping down to the central lawn with mature tree and shrub borders, two garden sheds.

##### **Side Covered Walkway**

23' 11" x 5' 5" ( 7.29m x 1.65m )

With a doors to the front and the rear of the house - ideal storage for bikes!

##### **Off-Street Parking**

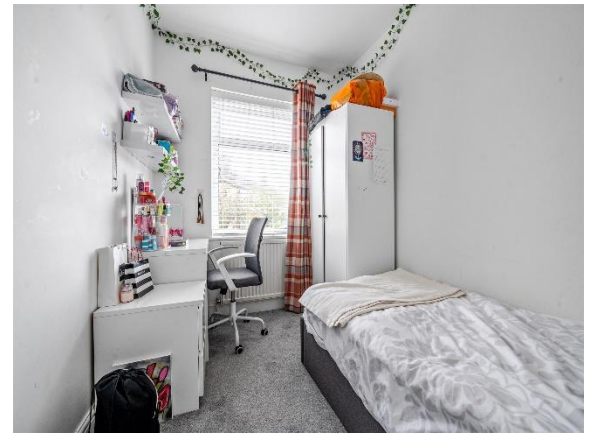
Brick paved off-street parking to the front for two cars.



**view this property online** [barnfields.co.uk/Property/ENF104848](http://barnfields.co.uk/Property/ENF104848)







welcome to

## Ridge Crest, Enfield

- Three Bedrooms
- Semi-Detached
- Large South Westerly Facing Rear Garden (In Excess Of 100ft) Backing Onto Open Fields
- Solar Panels
- 30ft Through Lounge

Tenure: Freehold EPC Rating: D  
Council Tax Band: F

Offers In Excess Of  
**£650,000**



Please note the marker reflects the postcode not the actual property

check out more properties at [barnfields.co.uk](https://www.barnfields.co.uk)



Property Ref:  
ENF104848 - 0008

1. MONEY LAUNDERING REGULATIONS Intending purchasers will be asked to produce identification documentation at a later stage and we would ask for your co-operation in order that there is no delay in agreeing the sale. 2. These particulars do not constitute part or all of an offer or contract. 3. The measurements indicated are supplied for guidance only and as such must be considered incorrect. Potential buyers are advised to recheck measurements before committing to any expense. 4. We have not tested any apparatus, equipment, fixtures or services and it is in the buyers interest to check the working condition of any appliances. 5. Where an EPC, or a Home Report (Scotland only) is held for this property, it is available for inspection at the branch by appointment. If you require a printed version of a Home Report, you will need to pay a reasonable production charge reflecting printing and other costs. 6. We are not able to offer an opinion either written or verbal on the content of these reports and this must be obtained from your legal representative. 7. Whilst we take care in preparing these reports, a buyer should ensure that his/her legal representative confirms as soon as possible all matters relating to title including the extent and boundaries of the property and other important matters before exchange of contracts.

Barnfields is a trading name of Sequence (UK) Limited which is registered in England and Wales under company number 4268443, Registered Office is Cumbria House, 16-20 Hockliffe Street, Leighton Buzzard, Bedfordshire, LU7 1GN. VAT Registration Number is 500 2481 05.

## Ridge Crest, Enfield, EN2

Approximate Area = 1193 sq ft / 110.8 sq m  
Outbuildings = 72 sq ft / 6.6 sq m  
Total = 1265 sq ft / 117.4 sq m  
For identification only - Not to scale



Floor plan produced in accordance with RICS Property Measurement 2nd Edition, Incorporating International Property Measurement Standards (IPMS2 Residential). © nichecom 2025. Produced for Barnard Marcus. REF: 1283315



barnfields



020 8363 3394



info@barnfields.com



1a Windmill Hill, Enfield, Middlesex, EN2 6SE



[barnfields.co.uk](https://www.barnfields.co.uk)