



Chiswick High Road, W4

£629,950

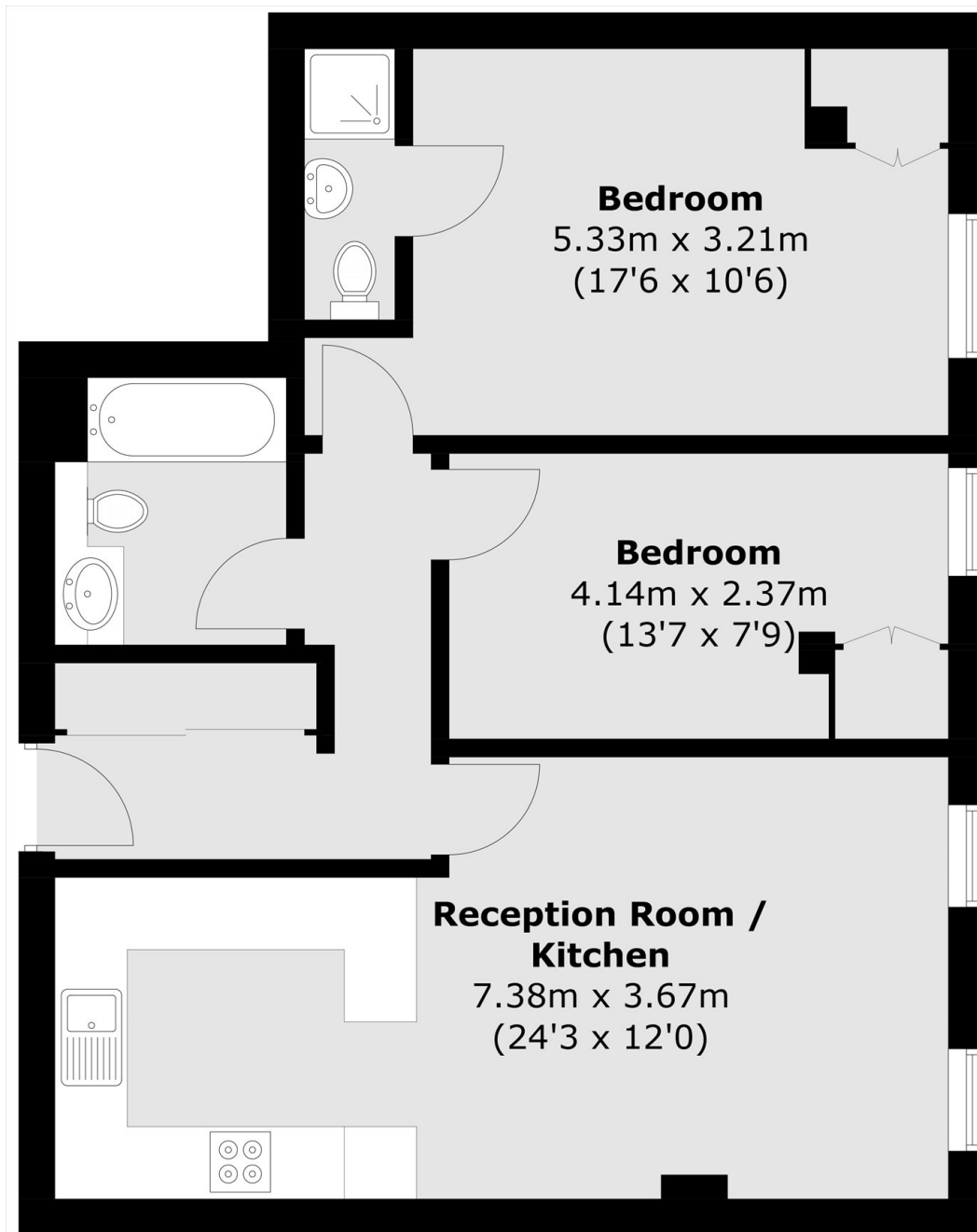
A well presented two bedroom, two bathroom ideally located purpose built flat. With lift access, share of freehold, gated off-street parking and no onward chain.

The property is within easy walking distance of Turnham Green station (District and Piccadilly lines) as well as the many shops, bars, cafés and restaurants Chiswick High Road has to offer.

Features

- Two Bedrooms
- Two Bathroom
- Gated Off-Street Parking
- Share Of Freehold
- Central Location
- No Onward Chain

Chiswick High Road,
London, W4



Total area (approx.): 65.2sq. m (701.8 sq. ft)

Dexters

Chiswick
388 Chiswick High Road
London
W4 5TF
Sales
020 8995 4321

Energy Rating: . We aim to make our particulars both accurate and reliable. However they are not guaranteed; nor do they form part of an offer or contract. If you require clarification on any points then please contact us, especially if you're traveling some distance to view. Please note that appliances and heating systems have not been tested and therefore no warranties can be given as to their good working order.

 **RICS** | Regulated
Estate Agent
and Letting Agent

dexters.co.uk