



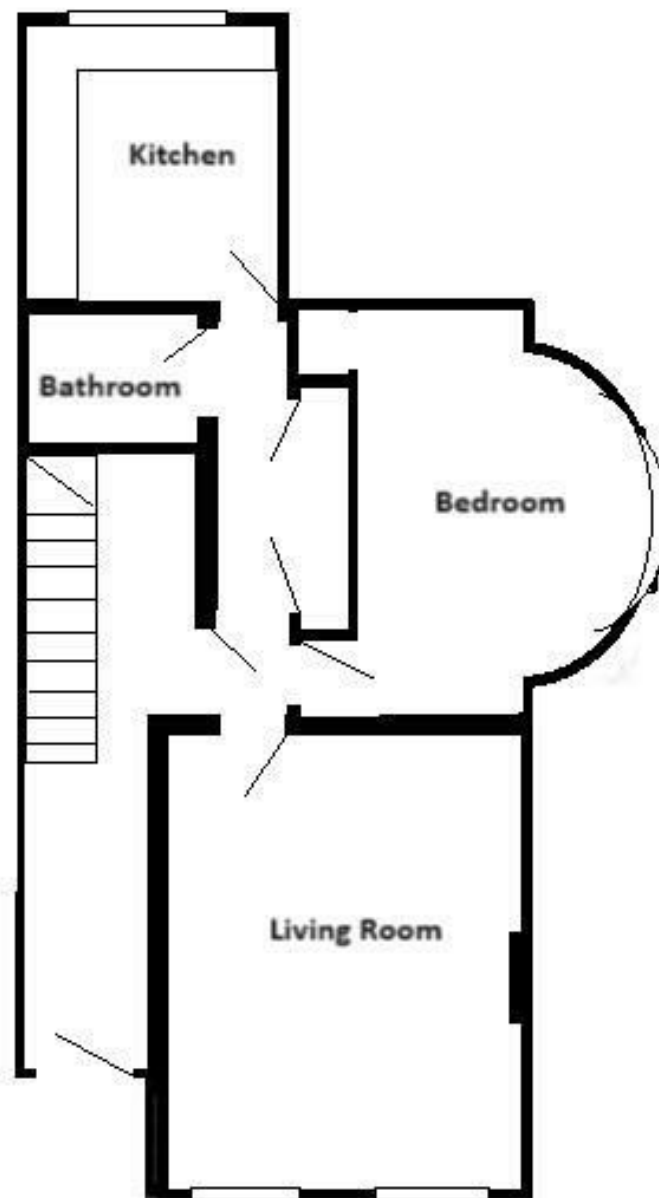
**Sure**  
Property Group  
Cheltenham



**FLAT 2, 60 GROSVENOR STREET, CHELTENHAM, GL52 2SG**

**£895 PCM**

**CHELTENHAM BOROUGH COUNCIL COUNCIL TAX BAND A**



Flat 2, 60 Grosvenor Street, GL52 2SG



PLEASE EMAIL YOUR ENQUIRY IN THE FIRST INSTANCE - A recently refurbished period apartment in the centre of town. This period property has been refurbished to a very high standard and offers very spacious accommodation. The property consists of a very spacious lounge with two large sash windows, high ceilings with ornate coving and a feature fireplace. The large bedroom has a curved wall with single wardrobe and storage cupboards. The hallway leads to a shower room and refurbished kitchen with white goods included. This property is carpeted in the living spaces along with new vinyl in hallway and kitchen, its spacious, well presented and if you are looking for a period property central to Cheltenham then its worth a look.

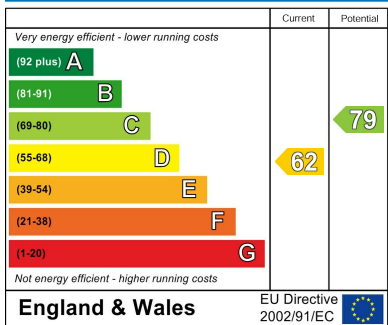








**Energy Efficiency Rating**



Sure Property Group  
 23 Bath Street, Cheltenham  
 GL50 1YA  
 01242 241200  
 info@surecheltenham.co.uk