



# St Marys Terrace

Little Venice, W2

£2,250 per month  
(£519.23 per week)

A charming one bedroom flat situated in a pretty white stucco conversion moments from the canals of Little Venice. Comprising of good sized double bedroom, open plan reception/kitchen with floor to ceiling windows and white tiled bathroom.

**CHESTERTONS**



# St Marys Terrace

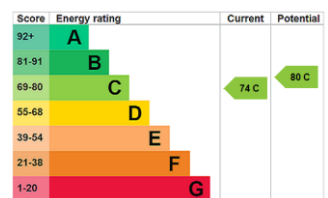
## Little Venice, W2

- One Bedroom
- Great Location



A charming one bedroom flat situated in a pretty white stucco conversion moments from the canals of Little Venice. Comprising of good sized double bedroom, open plan reception/kitchen with floor to ceiling windows and white tiled bathroom.

**Minimum Term:** 12 months  
**Deposit Required:** 5 weeks  
**Local Authority:** City of Westminster  
**Council Tax Band:** E  
**EPC Rating:** C  
**Part Furnished**



### *Chestertons Little Venice Lettings*

26 Clifton Road  
Maida Vale  
London  
W9 1SX  
littlevenicelettingsusers@chestertons.co.uk  
02072662369  
chestertons.co.uk

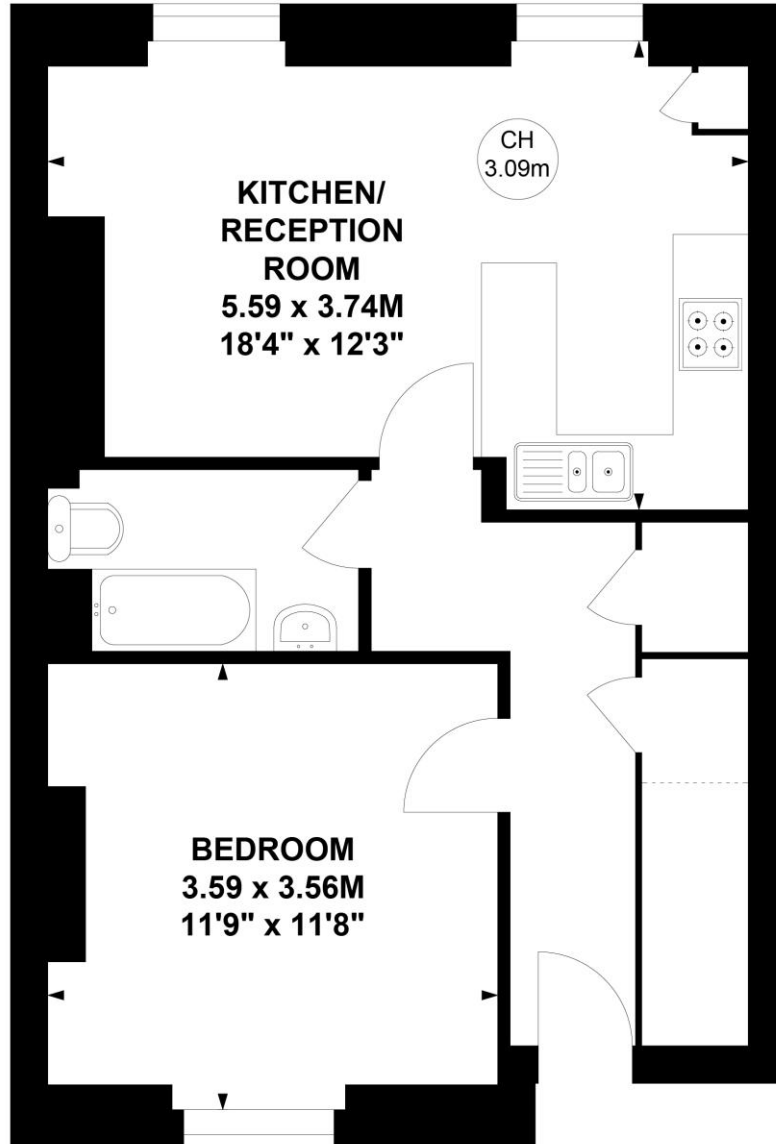
Additional tenant charges apply (fees apply to non-AST tenancies only)  
Tenancy Agreement Fee: £300  
References per Tenant/Guarantor: £60  
Inventory check (approx. £100 – £250 inc. VAT)  
chestertons.co.uk/property-to-rent/applicable-fees

# St. Mary's Terrace, W2

Approximate gross internal area

45.54 sq m / 490 sq ft

Key :  
CH - Ceiling Height



## First Floor

This plan is not to scale and must be used as layout guidance only. All measurements and areas are approximate and should not be relied upon to provide accurate information. This plan must not be relied upon when making property valuations, design considerations or any other such relevant decisions. We accept no responsibility or liability (whether in contract, tort or otherwise) in relation to any loss whatsoever arising from or in connection with any use of this plan or the adequacy, accuracy or completeness of it or any information within it.

