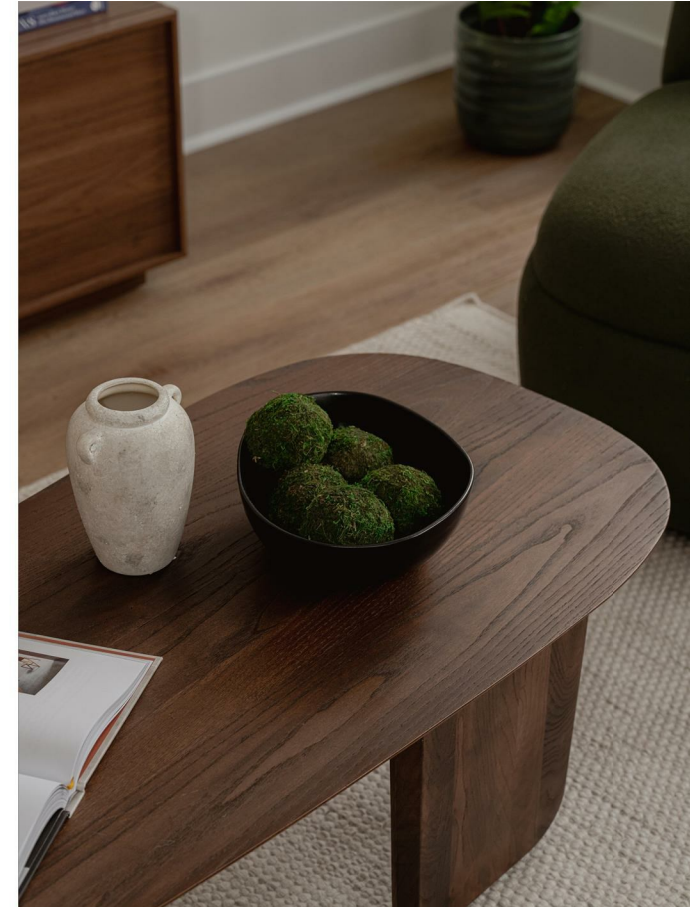




# Church Street, Reigate

£375,000





Introducing Maddison House, a boutique development of six contemporary apartments in central Reigate, thoughtfully converted to offer modern comfort and convenience. With four two bedroom and two one bedroom homes, all with the added bonus of allocated parking.





Located on the second floor of Maddison House, this two double bedroom apartment has far reaching views over the roof tops towards Reigate Priory Park. Part of an exclusive collection of six newly converted apartments, thoughtfully designed with modern living in mind.

Located on the first and second floors, with large sash windows, the apartments are flooded with natural light. The high ceilings create a feeling of space and the neutral tones are welcoming. The open plan kitchen/living spaces have two tone units in contrasting charcoal and stone grey, with white galaxy quartz worktops, which compliment the units beautifully. The kitchens are fully fitted with appliances, including ceramic induction hobs, dishwashers, washing machines, fridge freezers, ovens and microwaves.

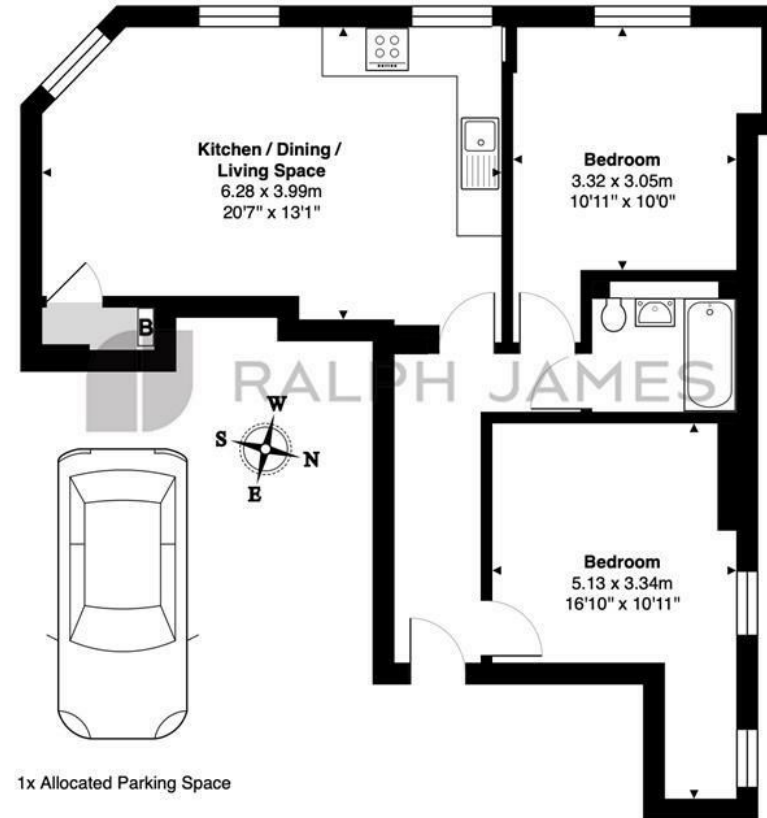
Fitted with luxury vinyl flooring in European Oak throughout the living space, and the contrast of soft carpets to the bedrooms, creating a touch of luxury underfoot. The bathrooms are fitted with Scudo wall hung vanity units and Scudo sanitaryware, whilst the white porcelain floor tiles makes the spaces feel fresh.

Outside, there is a communal terrace which leads up to the Castle grounds, home to the ruins of Reigate Castle, Despite its partial state, the castle remains charming and makes a delightful spot for a picnic or an afternoon stroll. Each apartment comes with an allocated parking space to the rear and there are two further spaces with EV charging points which are for communal use.



## Need to know

- Two double bedroom, second floor apartment
- Newly converted development of just six stunning apartments
- Central Reigate location offering excellent convenience for the High Street and train station
- High ceilings and large sash windows
- Communal outside terrace, leading directly to the Castle Grounds
- Allocated parking for each apartment as well as two EV charging points
- Stunning, two tone, matt finish kitchen units in charcoal and stone grey with complimentary white galaxy quartz worktops
- European oak style, luxury vinyl flooring in the living space with soft 'glacier white' carpets to the bedrooms



1x Allocated Parking Space

### Second Floor

Flat 5 Maddison House, Reigate

Total Area: 61.4 m<sup>2</sup> ... 661 ft<sup>2</sup>

FOR ILLUSTRATIVE PURPOSES ONLY.

Whilst every attempt has been made to ensure the accuracy of the floor plan shown, all measurements, positioning, fixtures, features, fittings and any other data shown are an approximate interpretation for illustrative purposes only and are not to scale.

No responsibility is taken for any error, omission, miss-statement or use of data shown.

The above statement applies to both 'Still Moving London LTD' and the Company or individual displaying this floor plan.

Unauthorised reproduction prohibited.

Â© Still Moving London LTD (www.stillmoving.london)



## Interested?

reigate@ralphjames.co.uk  
01737 333677

ralphjames.co.uk