

first for homes

first for property in life - firstforhomes.co.uk

Contact Allan England's Team
01592 752 944



Woodlea Grove, Glenrothes
Offers over £154,995

Woodlea Grove, Glenrothes

* SOLD AS SEEN *

Lovely Family Home - 3 Bed End Terraced Villa In Desirable Area of Glenrothes!

Allan England's team at first for homes are proud to welcome to the market this lovely 3 bed End Terraced Villa situated within the desirable area of Woodside, Central Glenrothes. The property offers entrance hall, family lounge, spacious open-plan kitchen/diner with patio doors to rear garden, cloaks/WC, 3 bedrooms and family bathroom. Externally, there is a 3-car driveway and gardens to the front and rear. Viewing is essential to ensure you don't miss out!

HOME REPORT VALUE - £155,000

EPC RATING - C

COUNCIL TAX BAND - D

Call first for homes - first for trust... first for service... first for aftercare!

SITUATION - Glenrothes is regarded as one of the most successful Towns in Scotland with a wealth of local amenities including Kingdom Shopping Centre as well as sport and leisure at Michael Woods and a multi-screen cinema. Glenrothes boasts its very own 18-hole Golf course and both Primary and Secondary schooling are available. For the commuter the A92 allows swift access to Edinburgh and there are railway stations at both Thornton and Markinch.

INFORMATION

These particulars are prepared on the basis of information provided by our clients. We have not tested the electrical system or appliances, nor where applicable, any central heating system. All sizes are recorded by electronic tape measurements to give an indicative, approximate size only. Prospective purchasers should make their own enquiries - no warranty is given or implied. This schedule is not intended to, and does not form any contract.





*** SOLD AS SEEN ***

SITUATION – Glenrothes

ENTRANCE HALL

FAMILY LOUNGE

15'9" x 12'1" approx. (4.82m x 3.70m approx.)

OPEN-PLAN KITCHEN / DINER

15'1" x 8'3" approx. (4.61m x 2.52m approx.)

CLOAKS / WC

UPPER LANDING

BEDROOM 1

13'3" x 8'6" approx. (4.06m x 2.60m approx.)

BEDROOM 2

10'9" x 8'6" approx. (3.29m x 2.60m approx.)

BEDROOM 3

9'11" x 6'3" approx. (3.04m x 1.93m approx.)

FAMILY BATHROOM

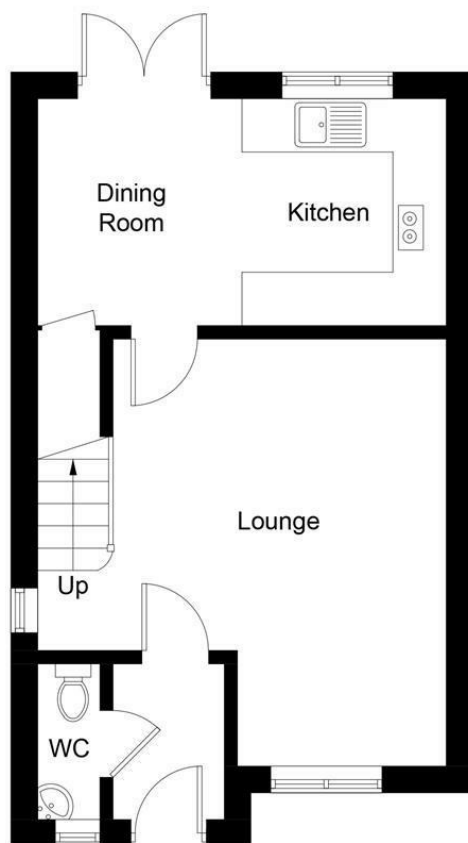
6'3" x 5'7" approx. (1.92m x 1.72m approx.)

3-CAR DRIVEWAY

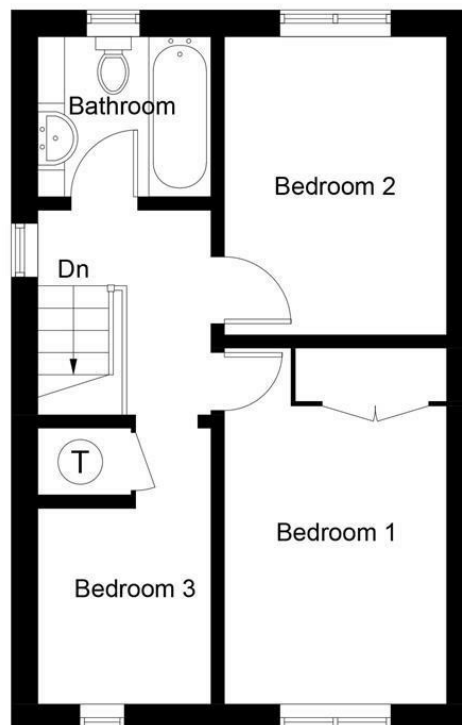
GARDEN GROUNDS

INFORMATION





Ground Floor



First Floor

Illustration for identification purposes only, measurements are approximate, not to scale. Fourlabs.co © (ID1265882)

Information

These particulars are prepared on the basis of information provided by our clients. We have not tested the electrical system or any electrical appliances, nor where applicable, any central heating system. All sizes are recorded by electronic tape measurement to give an indicative, approximate size only. Prospective purchasers should make their own enquiries – no warranty is given or implied. This schedule is not intended to, and does not form any contract.

FREE Valuation

Selling Your Home?

Choose first for homes - a highly experienced estate agency team you can trust to sell your home at the highest possible price. Offering fantastic savings on selling fees, with no compromise on service, free professional photography highlighting your home in its best light, first for homes will be your first choice. Contact us today to arrange your appointment.



first for trust



first for service



first for aftercare

first for homes
first for property in life - firstforhomes.co.uk

Contact Allan England's Team
01592 752 944

32 North Street, Glenrothes, Fife KY7 5NA
Fax: 01592 807947
sales@firstforhomes.co.uk
www.firstforhomes.co.uk