



Elmcroft Drive, Chessington, KT9

Chessington

Guide Price
£750,000

Bedrooms: 3

Bathrooms: 2

Receptions: 2

A beautifully presented three-bedroom detached bungalow, ideally situated on a generous plot offering a large rear garden and excellent access to local amenities and transport links.

This delightful home welcomes you with a spacious and bright L-shaped living/dining room, perfect for relaxation and entertaining. The living area is further enhanced by an attractive fireplace, creating a warm and inviting atmosphere.

Adjacent to the living space, a lovely conservatory extends the living area, providing a versatile space that enjoys tranquil views over the garden. This offers a seamless connection to the outdoors, ideal for enjoying natural light throughout the seasons.

The property benefits from three well-proportioned bedrooms and two bathrooms, providing comfortable accommodation. The interior is in good condition throughout, ensuring a smooth transition for new residents.

Externally, the bungalow boasts a large, well-maintained lawned rear garden, offering ample space for outdoor activities and gardening enthusiasts. Practical convenience is provided by two separate driveways, offering generous off-street parking, in addition to a single garage.

Located moments from local shops and providing great access to Surbiton and Kingston, this home also benefits from excellent transport connections including the A3, local bus routes, and a nearby train station. This property offers a wonderful opportunity to acquire a versatile and well-located home.





Elmcroft Drive, Chessington, KT9

Approximate Gross Internal Area = 106.3 sq m / 1144 sq ft
Garage = 13.4 sq m / 144 sq ft
Total = 119.7 sq m / 1288 sq ft

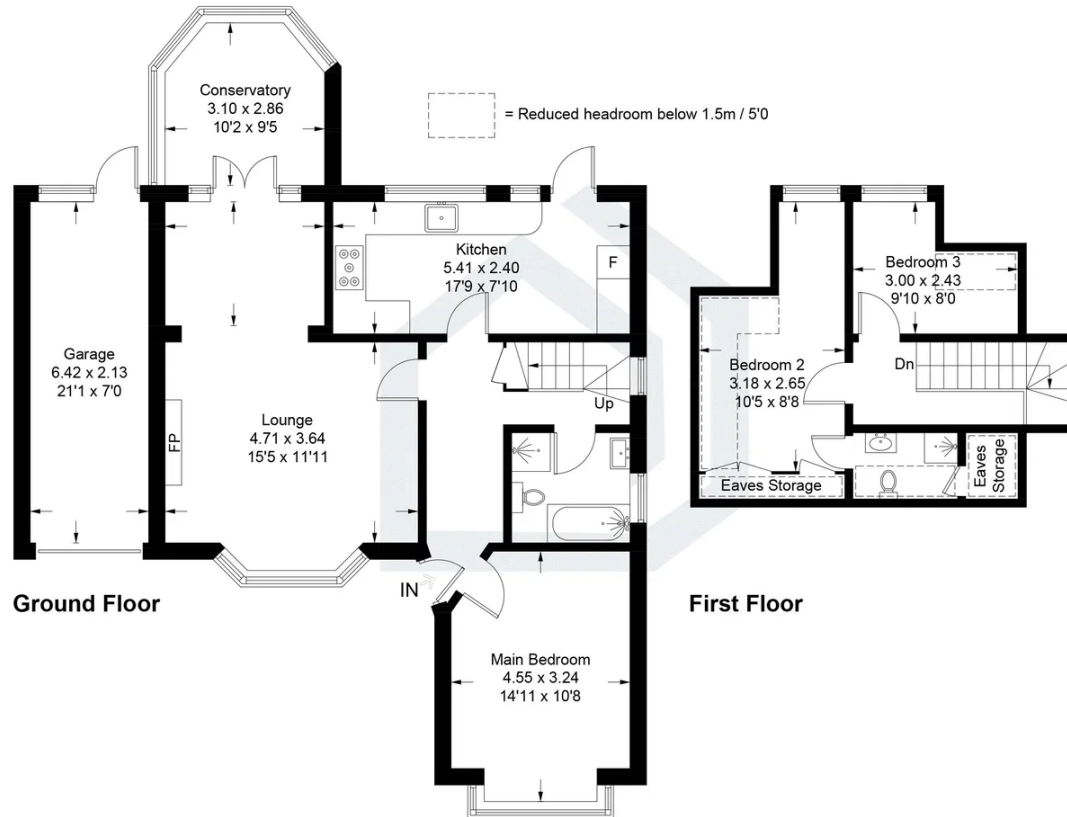


Illustration for identification purposes only, measurements are approximate, not to scale. Fourlabs.co © (ID1292238)

Bedrooms: 3

Bathrooms: 2

Receptions: 2

A beautifully presented three-bedroom detached bungalow, ideally situated on a generous plot offering a large rear garden and excellent access to local amenities and transport links.

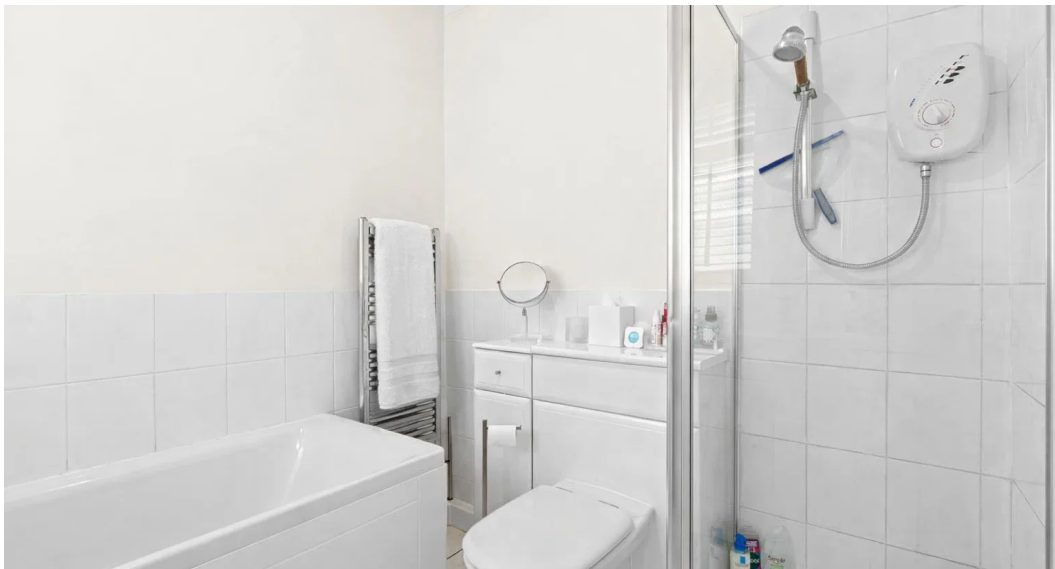
This delightful home welcomes you with a spacious and bright L-shaped living/dining room, perfect for relaxation and entertaining. The living area is further enhanced by an attractive fireplace, creating a warm and inviting atmosphere.

Adjacent to the living space, a lovely conservatory extends the living area, providing a versatile space that enjoys tranquil views over the garden. This offers a seamless connection to the outdoors, ideal for enjoying natural light throughout the seasons.

The property benefits from three well-proportioned bedrooms and two bathrooms, providing comfortable accommodation. The interior is in good condition throughout, ensuring a smooth transition for new residents.

Externally, the bungalow boasts a large, well-maintained lawned rear garden, offering ample space for outdoor activities and gardening enthusiasts. Practical convenience is provided by two separate driveways, offering generous off-street parking, in addition to a single garage.

Located moments from local shops and providing great access to Surbiton and Kingston, this home also benefits from excellent transport connections including the A3, local bus routes, and a nearby train station. This property offers a wonderful opportunity to acquire a versatile and well-located home.



Pacey Wingent Dickson Property Partnership Limited

197 Lower Road Great Bookham Leatherhead KT23 4DG

01372 456 804

info@pwdproperty.co.uk

<https://pwdproperty.co.uk/>