



10 Portishead Drive

Milton Keynes, MK4 3FX



William Coulson

Partnered With

Simpsons
Property Experts

"An Interior and Proportions to Impress!"

Occupying a desirable position, this executive five-bedroom link-detached family home impresses with its generous square footage, flexible layout, and beautifully presented interior, complemented by high-quality fixtures and fittings throughout.

Located in a highly sought-after residential area within walking distance of Prince George, Howe Park Wood, and Giles Brook Primary School, the property also offers easy access to Milton Keynes and Bletchley.

An inviting entrance hall with attractive flooring provides access to the study and guest WC, with stairs rising to the first floor.

The beautifully appointed living room is finished to a high standard and features a front-facing window with Venetian blinds. A ground floor study offers an ideal space for home working.

The open-plan kitchen/dining room overlooks the rear garden, creating a fantastic entertaining space filled with natural light and French doors leading outside. The kitchen includes a range of eye- and base-level units, worktops, a stainless steel sink with draining board, integrated double oven with gas hob, fridge/freezer, dishwasher, and understairs storage.

A second reception room with French doors to the rear offers flexibility as a snug, playroom, or formal dining room.

There are five generously sized bedrooms, all presented in excellent decorative order. The impressive principal bedroom features window to front aspect, built-in storage cupboard, and an ensuite shower room comprising a double-width shower, low-level WC, and wash hand basin.

The enclosed rear garden offers privacy and has been landscaped for entertaining, with a paved patio and power supply for a hot tub.

Offers over £550,000



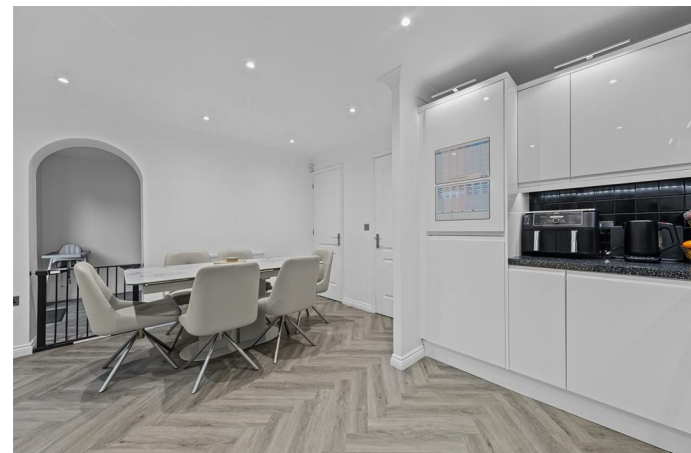
5



3

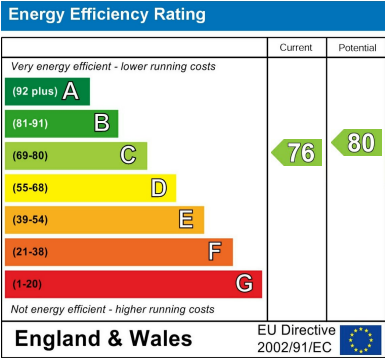


2





Whilst every attempt has been made to ensure the accuracy of the floor plan contained here, measurements of doors, windows, rooms and any other items are approximate and no responsibility is taken for any error, omission, or mis-statement. The plan is copyright to Simpson and Partners and is for illustrative purposes and should only be used as such by any prospective purchaser. The services, systems and appliances shown have not been tested and no guarantee as to their operability can be given.
Made with Metropix ©2026





William Coulson
Partnered With

Simpsons
Property Experts

Tel: 01908 040289

Email: william.coulson@simpsonspropertyexperts.co.uk

Web: <https://simpsonspropertyexperts.co.uk/our-locations/milton-keynes>

