



Belsize Park Gardens

London, NW3

£3,200 per month
(£738.46 per week)

Charming two double bedroom period property located in a quiet and peaceful neighbourhood. This cosy home offers a well-maintained living space with original style wood flooring & a spacious reception room. The property also features a family bathroom & a separate study.

Situated in a sought-after area, this property benefits from a convenient town location with easy access to local amenities and transport links.

CHESTERTONS



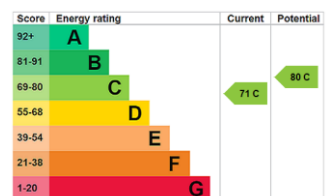
Belsize Park Gardens

London, NW3

- Lower Ground Floor
- Two Bedroom
- Extra Study
- Newly Decorated
- Parquet Flooring



Deposit Required: £3,692.31
Local Authority: London Borough Of Camden
Council Tax Band: F
EPC Rating: C
Unfurnished



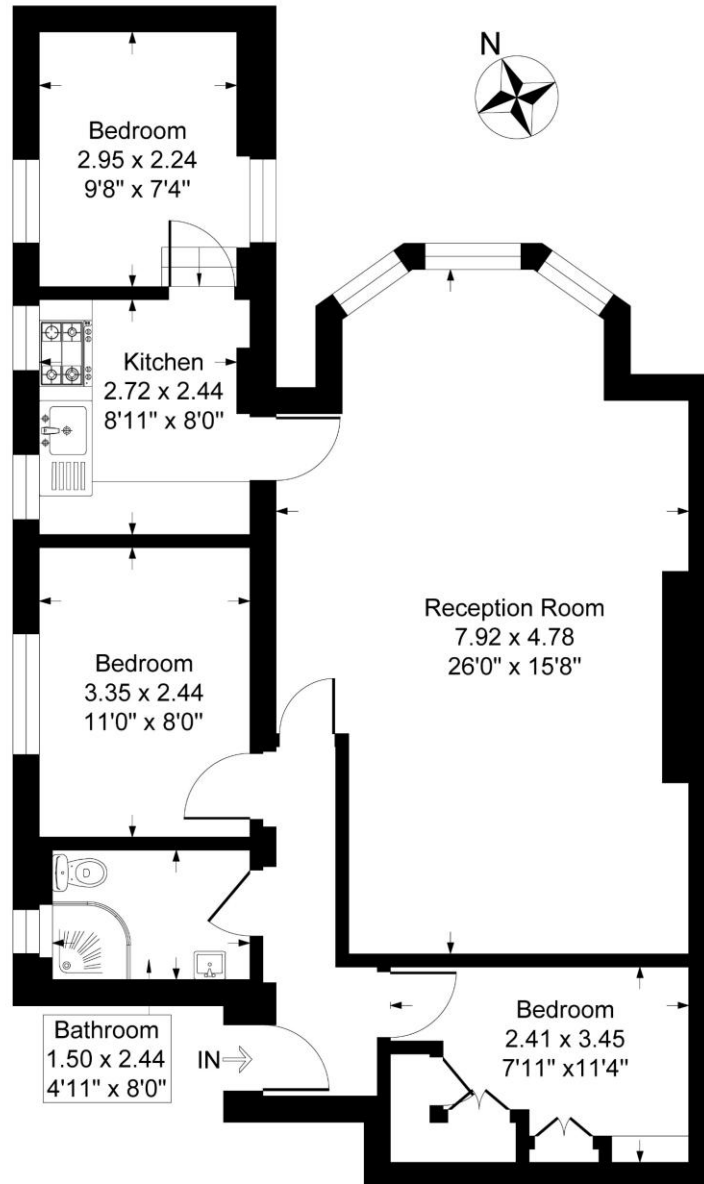
Chestertons Hampstead Lettings

55-56 Hampstead High Street
Hampstead
London
NW3 1QH
hampsteadlettingsusers@chestertons.co.uk
02077941125
chestertons.co.uk

Additional tenant charges apply (fees apply to non-AST tenancies only)
Tenancy Agreement Fee: £300
References per Tenant/Guarantor: £60
Inventory check (approx. £100 – £250 inc. VAT)
[chestertons.co.uk/property-to-rent/applicable-fees](https://www.chestertons.co.uk/property-to-rent/applicable-fees)

Belsize Park Gardens, London, NW3

Approximate Gross Internal Floor Area = 73.5 sq m / 792 sq ft



Lower Ground Floor

Illustration for identification purposes only, measurements are approximate, not to scale.

