



Guide Price
£600,000

Freehold

3x  1x  3x 

**Monson Road, Redhill,
Surrey, RH1 4AL**

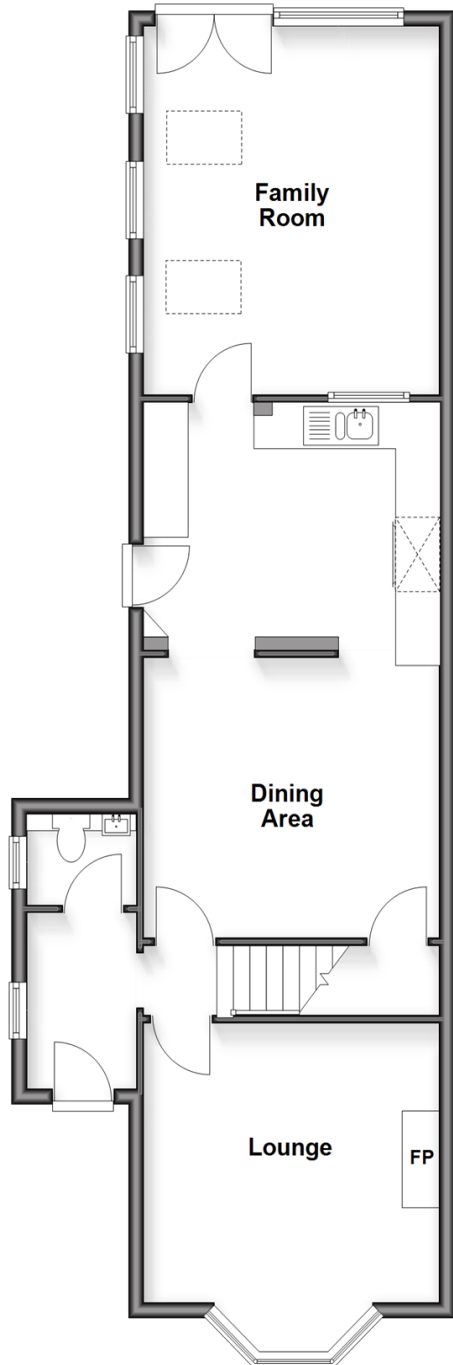
OVER 60?

Secure this property
for up to **59% less!**

cubitt & west
Helping you move forwards

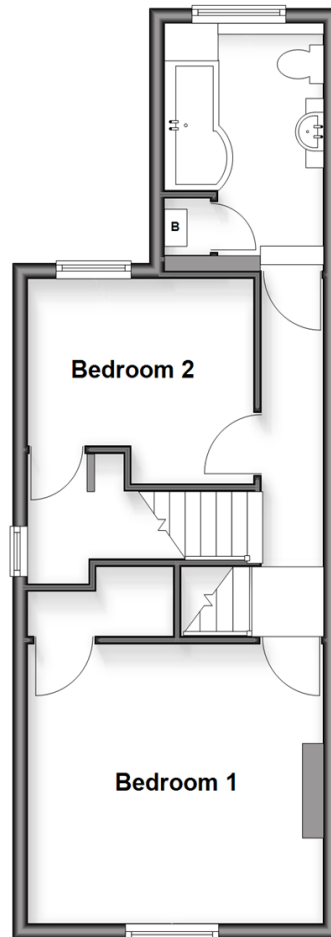
Ground Floor

Approx. 71.0 sq. metres (763.9 sq. feet)



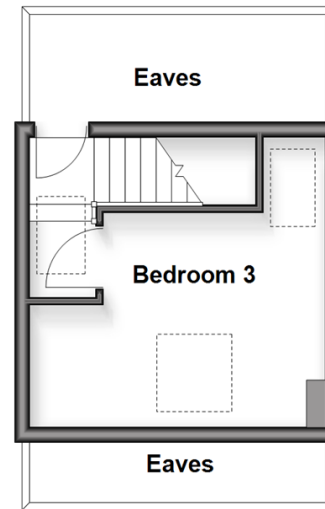
First Floor

Approx. 39.9 sq. metres (429.5 sq. feet)



Second Floor

Approx. 14.8 sq. metres (159.2 sq. feet)



Accommodation

GROUND FLOOR

Entrance Hall

Cloakroom

Lounge: 14'1 x 12'10 (4.30m x 3.91m)

Kitchen/Breakfast Area: 22'8 x 12'10 (6.91m x 3.91m)

Family Room: 15'5 x 13'5 (4.70m x 4.09m)

FIRST FLOOR

Landing

Bedroom 1: 12'10 x 11'10 (3.91m x 3.61m)

Bedroom 2: 9'10 x 8'6 (3.00m x 2.59m)

Bathroom

SECOND FLOOR

Landing

Bedroom 3: 12'10 x 12'2 (3.91m x 3.71m)

Eaves

OUTSIDE

Rear Garden

Driveway



Main features

- Stunning period detached property spanning three floors, offering abundant space and character throughout
- Generously sized reception rooms, perfect for family living and entertaining
- Elegant bay windows with bespoke shutters, adding charm and style
- Feature fireplace creating a warm and inviting atmosphere



Nearest Schools

Primary Schools: St Joseph's Catholic Primary, Redhill 1.0 miles, Brambletye Junior 1.0 miles, St Matthew's CofE Primary 1.1 miles
Secondary Schools: The Warwick School 0.4 miles, St Bede's School 1.3 miles, Woodfield School 1.6 miles



Transport Information

Train Stations: Redhill 0.3 miles, Earlswood 1.2 miles, Merstham 1.8 miles



Address

Monson Road, Redhill, Surrey, RH1 4AL



Directions

For directions to this property please contact us.



cubitt&west
Helping you move forwards

Call Redhill Branch 01737 778866 ■ cubittandwest.co.uk



■ If buying to rent, please check if Local Authority licensing schemes apply before proceeding

■ Through a Homewise Home For Life Plan people aged 60+ can secure this property for up to 59% less, by purchasing a Lifetime Lease



23411578/20260325/JB2/JB2