

5 Kipling Crescent, Fairfield

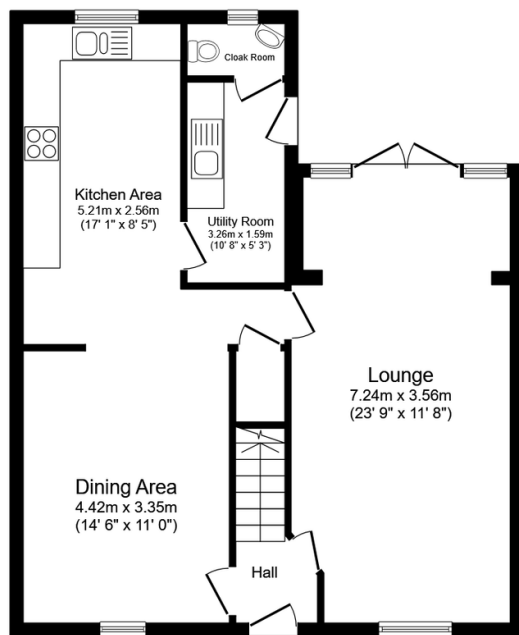
Guide Price £500,000



Overlooking attractive green space in the ever-popular Fairfield Park, this beautifully presented four-bedroom home offers spacious, versatile living in a peaceful yet well-connected setting.

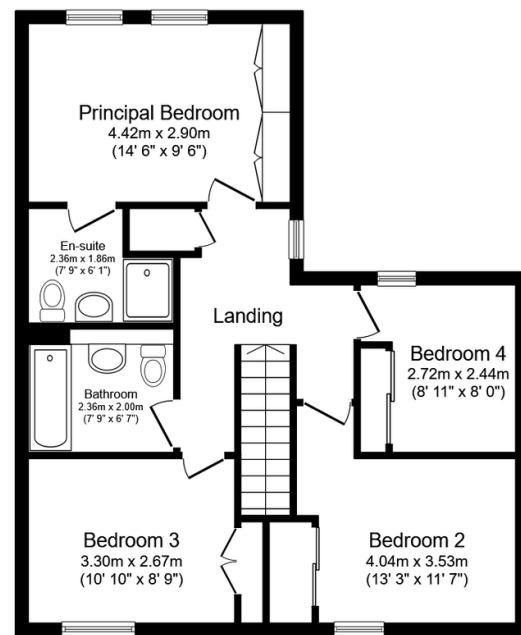
Key Features

- Four Generous Double Bedrooms
- Spacious Lounge with Bright Sun Room
- Separate Utility Room & Ground Floor Cloakroom
- Well Presented Throughout
- Garage & Allocated Parking Space
- Overlooking Attractive Green Space
- Modern Kitchen with Integrated Appliances
- Principal Bedroom with En-Suite Shower Room
- South-Facing Enclosed Rear Garden with Patio Areas
- Sought-After Fairfield Park Location



Ground Floor

Floor area 68.6 sq.m. (738 sq.ft.)



First Floor

Floor area 62.0 sq.m. (667 sq.ft.)

Total floor area: 130.6 sq.m. (1,405 sq.ft.)

This floor plan is for illustrative purposes only. It is not drawn to scale. Any measurements, floor areas (including any total floor area), openings and orientations are approximate. No details are guaranteed, they cannot be relied upon for any purpose and do not form any part of any agreement. No liability is taken for any error, omission or misstatement. A party must rely upon its own inspection(s). Powered by www.Propertybox.io