



Warren House, Union Lane

Isleworth, TW7

£330,000

Spacious two double bedroom, two bathroom apartment with gated parking, located in the ever popular Union Lane development. Just a short walk to Syon Lane train station, the beautiful Syon Park, Thames Riverside, a range of excellent local schools and amenities.

Tenure: Leasehold

EPC Energy Efficiency Rating: C

EPC Environmental Impact Rating: C

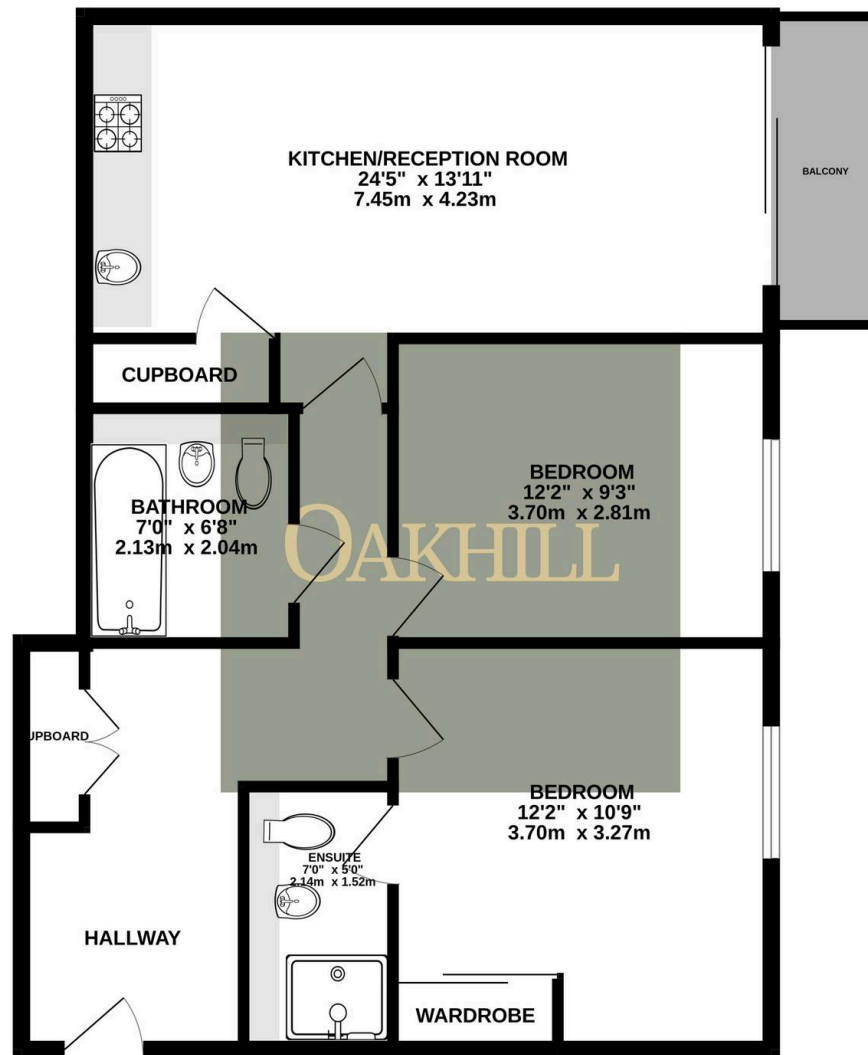
- No Forward Chain
- Allocated Parking
- Two Bathrooms
- Private Balcony
- Heating and Hot Water Included in Service Charge
- Lift Access



SCAN HERE
FOR
PROPERTY
DETAILS



743 sq.ft. (69.0 sq.m.) approx.



OAKHILL

TOTAL FLOOR AREA : 743 sq.ft. (69.0 sq.m.) approx.

Whilst every attempt has been made to ensure the accuracy of the floorplan contained here, measurements of doors, windows, rooms and any other items are approximate and no responsibility is taken for any error, omission or mis-statement. This plan is for illustrative purposes only and should be used as such by any prospective purchaser. The services, systems and appliances shown have not been tested and no guarantee as to their operability or efficiency can be given.
Made with Metropix ©2025