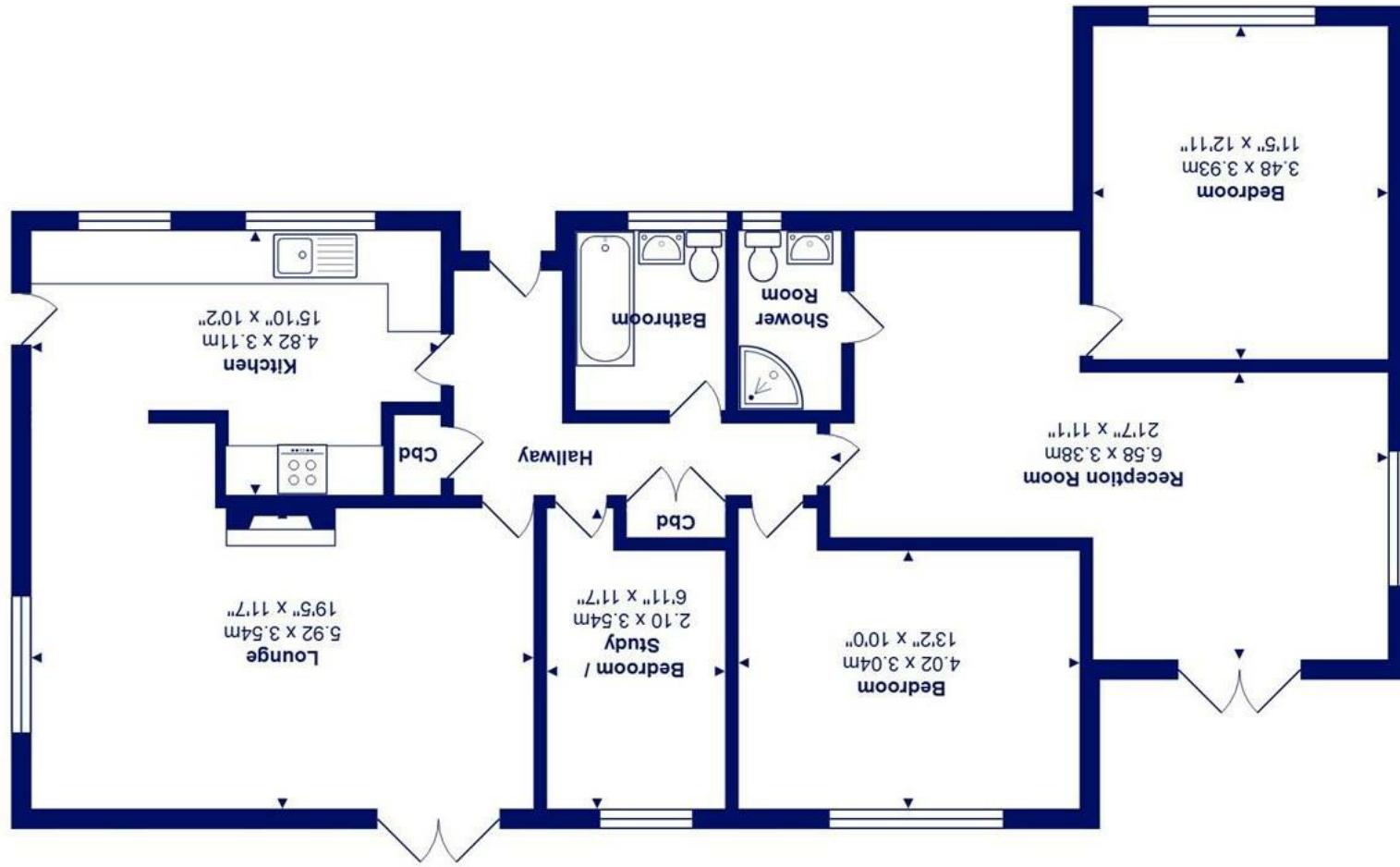


All measurements are approximate and for display purposes only  
 Total Area: 110.2 m<sup>2</sup> ... 1186 ft<sup>2</sup>



*12 Woodfield Gardens, Highcliffe on Sea, BH23 4QA* *£547,000*

**Mitchells**  
 1963 — TODAY

An immaculate property that had been thoroughly refurbished/ extended in recent years. The detached bungalow in a smart contemporary style with accommodation approaching 1200sqft.

The bungalow is situated in this popular residential area with open outlook to the front with easily maintained gardens enjoying all day sunshine and is just a short stroll to the local shops at Saulflands.

- Spacious three bedroom detached bungalow
- Two smart bath/shower rooms
- Stylish open plan kitchen/dining/living room with access onto the garden
- Large second reception room perfect as a another sitting room
- A lovely sunny south facing easily maintained rear garden
- Gas fired central heating & upvc double glazing
- Off road parking for several cars
- Walking distance to Wingfields recreation ground and the local shops at Saulflands
- Hinton Admiral main line railway station is just around the corner
- Highcliffe school catchment area

EPC Rating Band: D  
Council Tax Band: E  
Freehold

Successful buyers will be required to complete online identity checks provided by Lifetime Legal. The cost of these checks is £49 inc. VAT per purchase which is paid in advance, directly to Lifetime Legal. This check verifies your identity in line with our obligations as stipulated by our regulatory body, HMRC

