



# Tanner Street

London, SE1

£2,400 per month  
(£553.85 per week)

A superb warehouse conversion with large reception room, separate kitchen, 2 bedrooms and 2 bathrooms. The property benefits from solid wood flooring, exposed brickwork and traditional warehouse windows.





# Tanner Street

## London, SE1

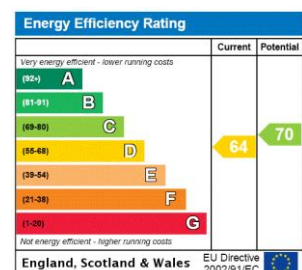
- Two Bedrooms
- Bright Reception Room
- Traditional Warehouse Windows
- Exposed Brickwork





A superb warehouse conversion featuring a bright living room with exposed brickwork and dual aspect windows overlooking Tanner Street Park. The apartment is perfectly located London Bridge station and the many coffee shops and restaurants of Bermondsey Street. This beautiful apartment further benefits; principle bedroom with en-suite shower room, a small double bedroom, bathroom and kitchen.

**Minimum Term:** 12 months  
**Deposit Required:** £2,769.23  
**Local Authority:** London Borough of Southwark (Council Tax)  
**Council Tax Band:** E  
**EPC Rating:** C  
**Furnished**



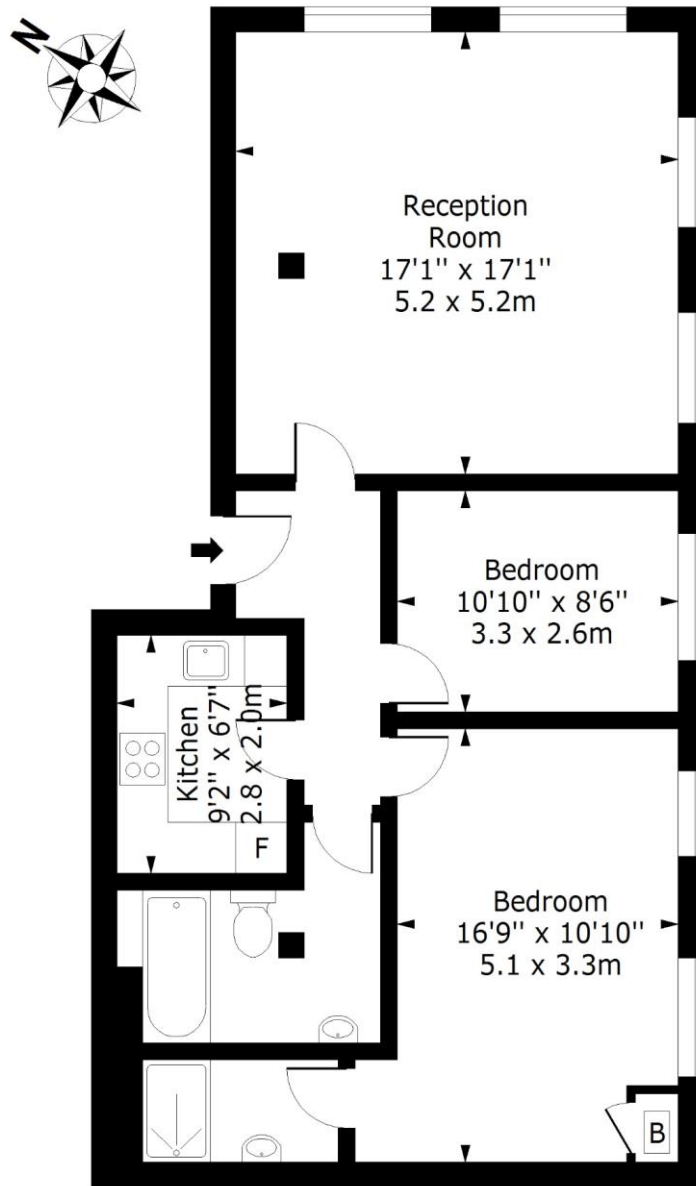
### Chestertons Tower Bridge Lettings

220 Tower Bridge Road  
 Tower Bridge  
 London  
 SE1 2UP  
 towerbridge@chestertons.co.uk  
 02073576911  
 chestertons.co.uk

Additional tenant charges apply (fees apply to non-AST tenancies only)  
 Tenancy Agreement Fee: £300  
 References per Tenant/Guarantor: £60  
 Inventory check (approx. £100 – £250 inc. VAT)  
 chestertons.co.uk/property-to-rent/applicable-fees

## Tanner Street, SE1

Approx. Gross Internal Area 838 Sq Ft - 77.85 Sq M



## Second Floor

Floor Area 838 Sq Ft - 77.85 Sq M

For Illustration Purposes Only - Not To Scale

[www.lpaplus.com](http://www.lpaplus.com)

