



FULHAM ROAD, SW6

£795,000

This beautifully refurbished apartment has been thoughtfully designed to offer the very best of contemporary living in a prime Fulham location. Recently converted, the property provides spacious, well-proportioned

999 year lease

Three double bedrooms

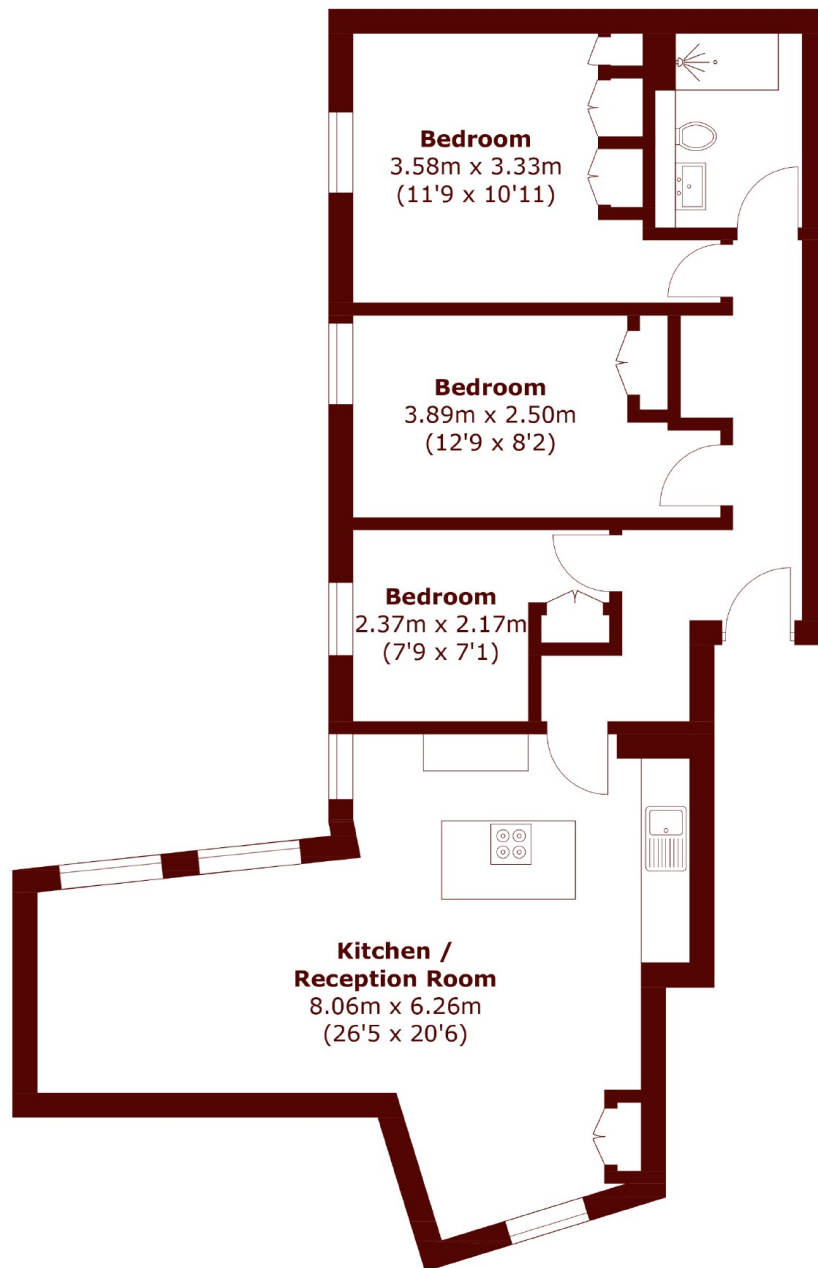
South facing orientation

High quality finish

Bike storage

Minutes away from the Tube

STEP INSIDE FULHAM ROAD



Total area (approx.): 78.2 sq. m (841.7 sq. ft)

Fulham
020 7736 9822

Energy Rating: We aim to make our particulars both accurate and reliable. However, they are not guaranteed; nor do they form part of an offer or contract. If you require clarification on any points then please contact us, especially if you're traveling some distance to view. Please note that appliances and heating systems have not been tested and therefore no warranties can be given as to their good working order

**MARSH &
PARSONS**