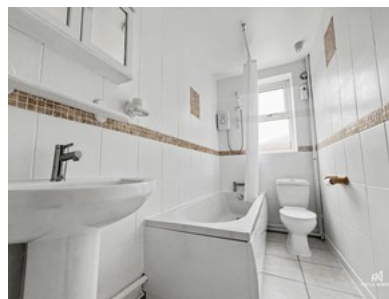
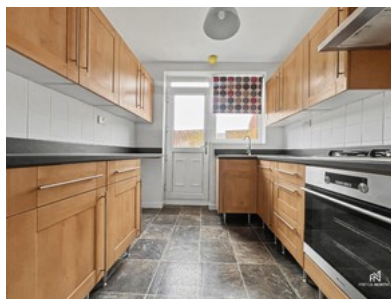
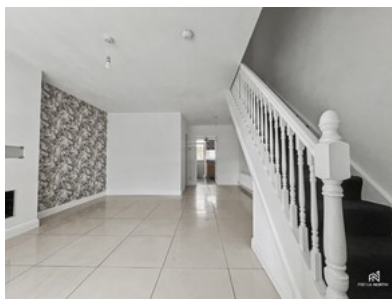





Marathon Close Liverpool



- ✓ Three Bedrooms
- ✓ Downstairs Bathroom
- ✓ Double Glazing
- ✓ Close To City Centre
- ✓ Front & Rear Gardens
- ✓ Close To Nursery & Schools
- ✓ Large Lounge
- ✓ Cul-de-sac
- ✓ Gas Hob
- ✓ 999 Year Lease



Bedroom  3 Bathroom  1 Reception  1

OIRO

£175,000