

Priory Road, NW6

£600,000

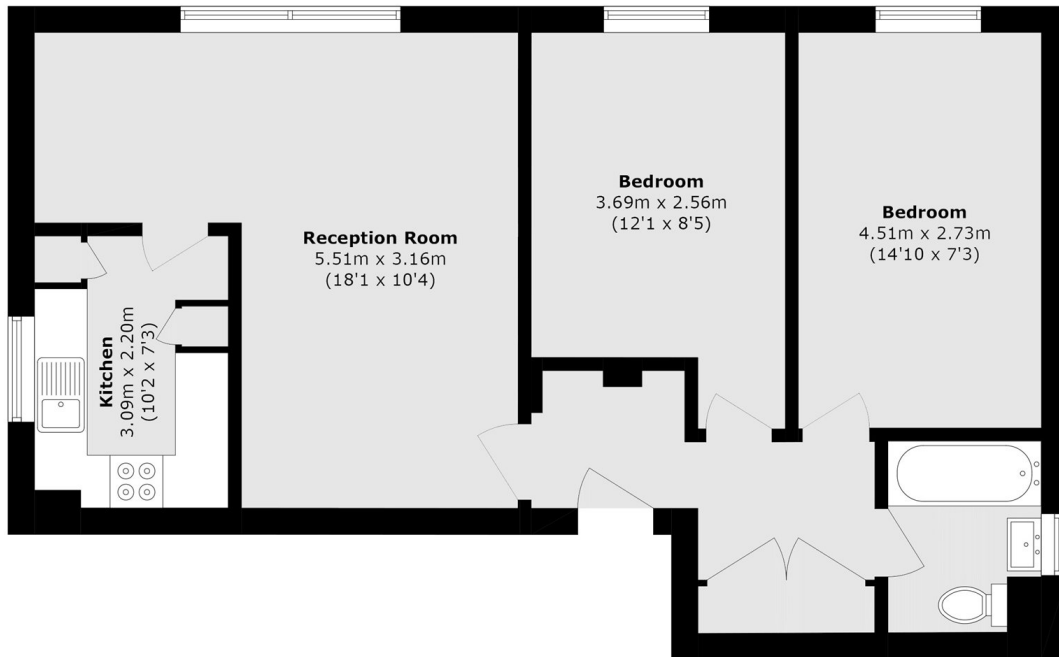
This two double bedroom home offers spacious living with a separate kitchen and access to a large communal garden. The property will be sold with no onward chain.

Priory Road is ideally positioned to benefit from the shops, restaurants and cafés of West Hampstead and Kilburn, whilst a combination of the Jubilee line and Bakerloo line, Overground and Thameslink transport links can be found nearby.

Features

- Two Bedrooms
- Communal Garden
- Second Floor
- Separate Kitchen
- Close To Station
- No Onward Chain

Priory Road, London, NW6



Second Floor

Total area (approx.): 67.2 sq. m (723.3 sq. ft)