



## Avenue Road, TW12

### £350,000

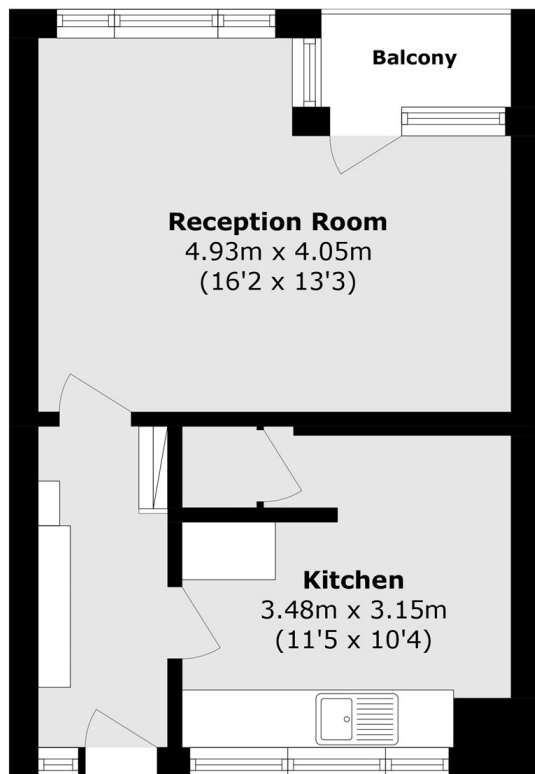
Spacious three bedroom, split level maisonette in a central location, coming with no onward chain. Featuring a private balcony and strong rental yield potential, this is an ideal home or investment purchase.

Avenue Road is a very popular road within the Hampton village and is great if you require a short walk to the station and love having both shops and restaurants on your doorstep. Excellent schools, Bushy Park and the River Thames are also close by.

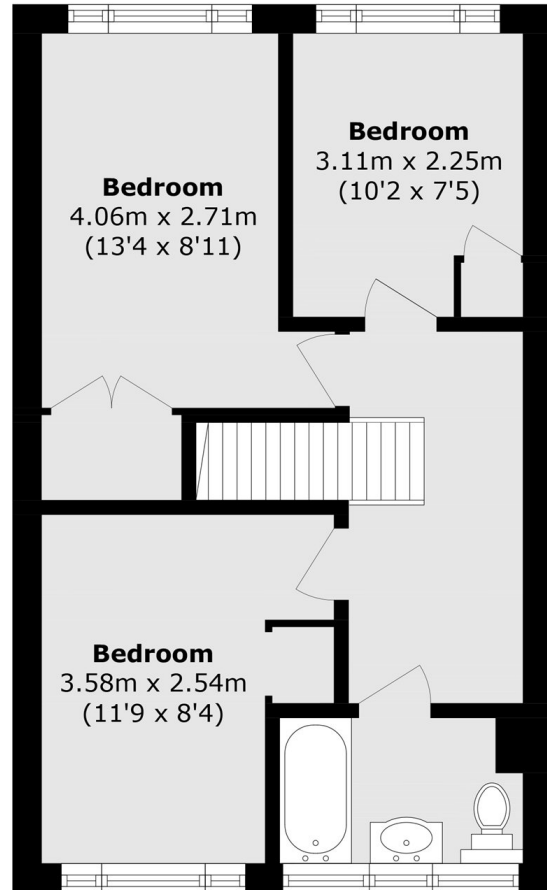
### Features

- Three Bedrooms
- Split Level Maisonette
- No Onward Chain
- Great Rental Yield
- Central Location
- Balcony

# Avenue Road, Hampton, TW12



**Second Floor**



**Third Floor**

Total area (approx.): 77.6 sq. m (835.2 sq. ft)  
Balcony area (approx.): 2.5 sq. m (26.9 sq. ft)