

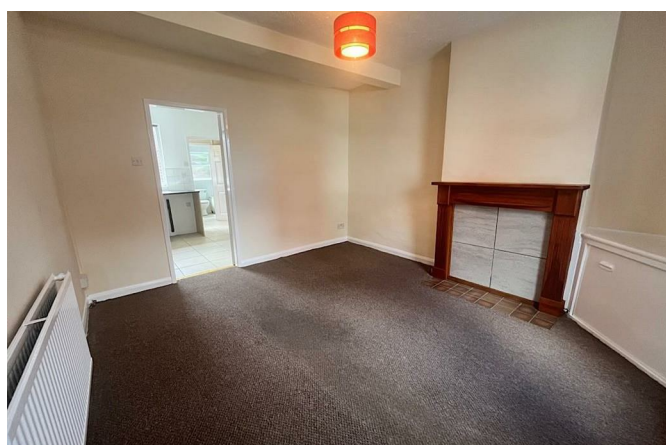
# 2 Upper Lord Street Oswestry SY11 1LT



3 Bedroom House - Terraced  
£825 PCM

## The features

- TWO/ THREE BEDROOM TERRACED HOME
- LOUNGE & KITCHEN WITH APPLIANCES
- FURTHER BEDROOM/ STUDY
- GAS CENTRAL HEATING & DOUBLE GLAZING
- ENERGY PERFORMANCE RATING 'E'
- CONVENIENT POSITION CLOSE TO TOWN
- TWO DOUBLE BEDROOMS AND BATHROOM
- SMALL COURTYARD TO THE REAR
- SMALL REAR COURTYARD AREA



### **\*\*\* TWO/THREE BEDROOM TERRACED HOME \*\*\***

**An opportunity to rent this two/ three bedroom terraced home offering convenient living with ease of access to a wealth of amenities in the Market Town of Oswestry and ease of access to transport links including railway station at Gobowen and the A5/ M54 motorway network.**

**Briefly comprising of lounge, kitchen, bathroom, two double bedrooms, further bedroom/ study and bathroom. Having benefit of gas central heating, double glazing and enclosed rear courtyard.**

#### **Property details**

##### **LIVING ROOM**

With carpet, radiator, window to front aspect, radiator

##### **KITCHEN**

With a range of wood effect units with round edge work surface over and tiled splashbacks. Sink set into base unit, integrated oven with electric hob and cooker hood over. Recess and plumbing for washing machine, window to rear aspect

##### **BATHROOM**

With 3 piece suite to include; panelled bath with electric shower over, WC, pedestal wash hand basin, window to rear aspect

##### **STAIRS AND LANDING**

With carpet

##### **BEDROOM 1**

With carpet, radiator, window to front aspect

##### **BEDROOM 2**

With carpet, radiator, window to rear aspect, cupboard housing boiler. Door leading to;

##### **BEDROOM 3/STUDY**

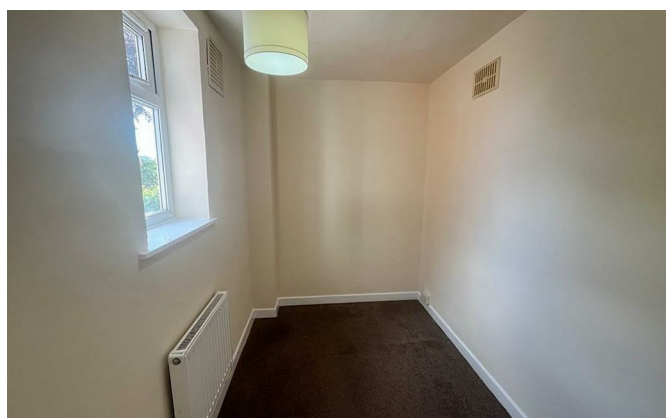
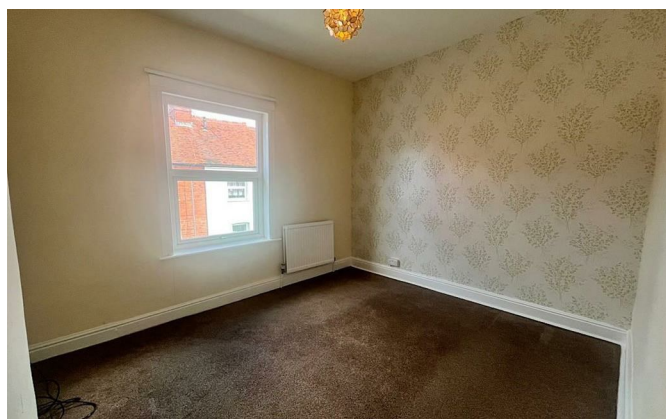
With carpet, radiator, window to side aspect

##### **OUTSIDE**

The property benefits from a small rear courtyard

## 2 Upper Lord Street, Oswestry, SY11 1LT.

3 Bedroom House - Terraced  
£825 PCM





**Judy Bourne**

**Director at Monks**  
judy@monks.co.uk

**Get in touch**

**Call.** 01743 361422  
**Email.** info@monks.co.uk  
**Click.** www.monks.co.uk

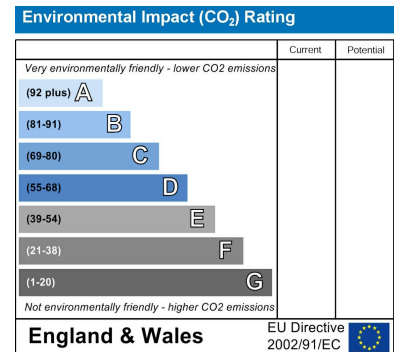
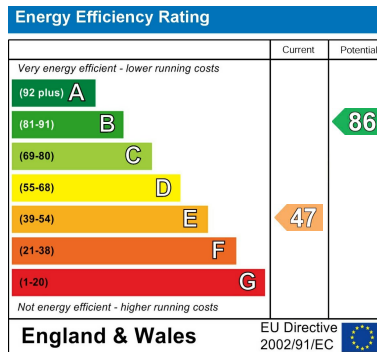
**Shrewsbury office**

10a-11 Shoplatch,  
Shrewsbury, Shropshire, SY1

**We're available 7 days a week**

HOME – four words that define who,  
and what we are:

**Honest, Original, Motivated, Empathetic**



Monks for themselves and for the vendors of this property, whose agents they are give notice that:

- These particulars provide a general outline only for the guidance of intended purchasers and do not constitute part of an offer or contract.
- All descriptions, dimensions and distances are approximate, references to state and condition, relevant permissions for use and occupation and other details are provided in good faith and believed to be correct.
- No person in the employment of Monks has any authority to make or give any representation or warranty whatever in relation to this property.
- Electricians and other appliances mentioned in these particulars have not been tested by Monks. Therefore prospective purchasers must satisfy themselves as to their working order.