



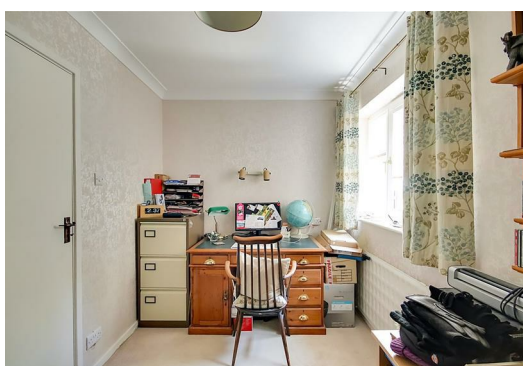
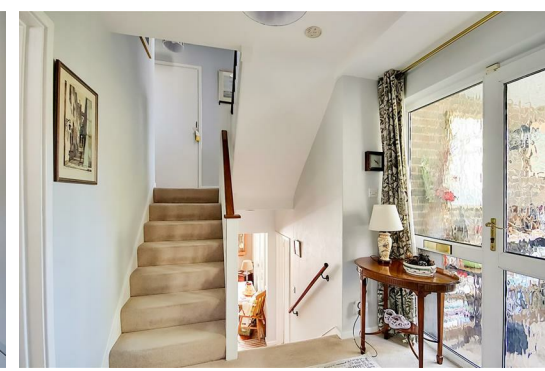
2 Longlands, Charmandean, Worthing, BN14 9NT
Guide Price £875,000

and company
bacon
bespoke



A four bedroom detached family residence situated within the highly sought after catchment area of Charmandean, close to local shops and amenities and offering ideal access to either the A24 or A27 roads. The accommodation is laid out across four floors and consists of an enclosed entrance porch, reception hall, lounge, dining room, kitchen/breakfast room, utility room, office, principle bedroom with en-suite, three further double bedrooms, family bathroom, loft, private driveway, double garage and attractive gardens to three sides of the property.

- Detached Family Residence
- Highly Sought After Location
- Arranged Over Four Floors
- Spacious & Versatile Accommodation
- Four Bedrooms
- Two Bathrooms
- Attractive Grounds
- Viewing Essential



FIRST FLOOR

Description to follow.

Enclosed Entrance Porch

Accessed via a part obscure glass double glazed front door with matching windows to the North and East aspects. Tiled flooring. Radiator. Inner obscure glass window and door to the reception hall.

Reception Hall

Walk in cloaks area. Levelled ceiling. Staircase up to second floor landing and down to ground floor.

Office

4.19m x 2.39m (13'9 x 7'10)

South aspect via double glazed windows. Radiator. Wall light point. Levelled and coved ceiling.

Ground Floor Cloakroom

1.78m x 0.86m (5'10 x 2'10)

Low level W.C. Wall mounted corner wash hand basin with tiled splashback. Radiator. Tile effect vinyl flooring. Levelled ceiling. Obscure glass double glazed window.

GROUND FLOOR

Inner Hallway

Parquet wood flooring. Understairs storage cupboard. Central heating thermostat.

Lounge

7.65m x 4.17m (25'1 x 13'8)

Dual aspect via North facing double glazed windows and West facing double glazed sliding doors. Feature wood burning fire. Two radiators. Coved and textured ceiling. Inner glazed double doors to the dining room.

Dining Room

5.23m x 4.06m (17'2 x 13'4)

West aspect via double glazed windows. Radiator. Parquet wood flooring. Serving hatch to kitchen. Coved and textured ceiling.

Kitchen/Breakfast Room

5.92m x 3.07m (19'5 x 10'1)

Re-fitted suite comprising of a single drainer sink unit having mixer taps and storage cupboards below. Areas of solid wood work surfaces offering additional cupboards and drawers under. Matching shelved wall units. Inset five ring induction hob with fitted extractor hood over. Fitted double oven and grill. Space for microwave.

Integrated dishwasher. Space for American design fridge/freezer or two separate upright fridge/freezers. Matching island with solid wood worksurface and breakfast bar. Two radiators. Wood effect LVT flooring. Levelled ceiling with spotlights. South and West aspect double glazed windows. Doors to utility room and dining room.

Utility Room

3.02m x 1.80m (9'11 x 5'11)

East aspect via double glazed sliding doors. Space for washing machine and tumble dryer. Wall mounted units. Tiled walls. Tiled flooring. Levelled ceiling with spotlights. Storage cupboard housing the homes floor standing boiler.

SECOND FLOOR

Landing

Built in airing cupboard with slatted shelving. Levelled ceiling with access via an extending ladder to a large, boarded and insulated loft space. This loft space also contains the large hot water tank which was fitted new in 2018. Staircases to first floor hall and third floor landing. Doors to all second floor rooms.

Bedroom One

4.85m x 4.17m (15'11 x 13'8)

North aspect via double glazed windows. Fitted bedroom wardrobes to the width of the room. Radiator. Levelled ceiling.

En-Suite Bathroom

2.64m x 1.98m (8'8 x 6'6)

Fitted suite comprising of a panelled bath having mixer taps with shower attachment. Pedestal wash hand basin. Low level w.c. Majority tiled walls. Radiator and heated towel rail. Levelled ceiling. Obscure glass double glazed window.

Bedroom Two

4.88m x 3.10m (16'0 x 10'2)

South aspect double glazed windows. Two built in double wardrobes. Radiator. Levelled ceiling.

Family Bathroom

2.69m x 1.98m (8'10 x 6'6)

Fitted suite comprising of a panelled bath having mixer taps with shower attachment. Pedestal wash hand basin. Low level w.c. Majority tiled walls. Radiator and heated towel rail. Levelled ceiling. Obscure glass double glazed window.

THIRD FLOOR

Landing

North aspect double glazed window. Radiator. Levelled ceiling.

Bedroom Three

4.17m x 3.10m (13'8 x 10'2)

South aspect double glazed windows. Walk in wardrobe. Radiator. Levelled ceiling.

Bedroom Four

4.06m x 3.05m (13'4 x 10'0)

South aspect double glazed windows. Fitted bedroom wardrobes. Radiator. Levelled ceiling.

OUTSIDE

Private Driveway

Providing off street parking and leading to the homes garage. Outside water tap. Side gate to rear garden. Steps down to the front garden.

Double Garage

5.59m x 4.50m (18'4 x 14'9)

Brick built and adjoining double garage accessed via an electric up and over door. Power and light. Double glazed window and door to rear garden. Inner door to the reception hall.

Grounds

The grounds to this property are to three sides and are truly a further feature of this property due to the size and established gardens. To the front of the property is mainly laid to lawn with attractive flower and shrub beds and borders. The rear garden is paved and tiered with various patio areas, flower and shrub beds and a gate leading to the side garden. The side garden is where the grounds really come to life with a Westerly aspect and an array of various trees, flower and shrubs. The majority of area is laid to lawn with a paved patio area to the rear of the home offering ample space for garden table and chairs.

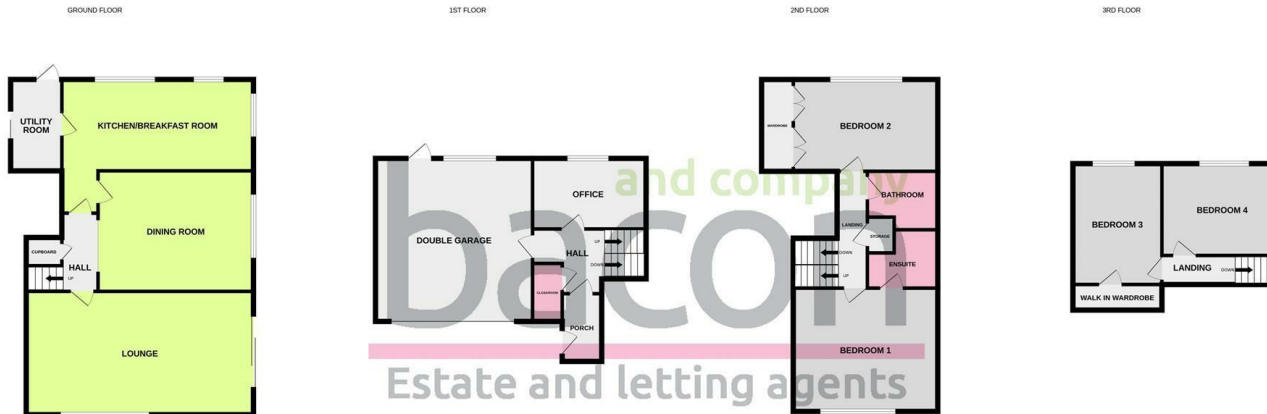
Council Tax

Council Tax Band F









Whilst every attempt has been made to ensure the accuracy of the floorplan contained here, measurements of doors, windows, rooms and any other items are approximate and no responsibility is taken for any error, omission or mis-statement. This plan is for illustrative purposes only and should be used as such by any prospective purchaser. The services, systems and appliances shown have not been tested and no guarantee as to their operability or efficiency can be given.
 Made with Metropix ©2026

| Energy Efficiency Rating | | |
|---|-------------------------|-----------|
| | Current | Potential |
| Very energy efficient - lower running costs | | |
| (92 plus) A | | |
| (81-91) B | | |
| (69-80) C | | 75 |
| (55-68) D | | |
| (39-54) E | 54 | |
| (21-38) F | | |
| (1-20) G | | |
| Not energy efficient - higher running costs | | |
| England & Wales | EU Directive 2002/91/EC | |

These particulars are believed to be correct, but their accuracy is not guaranteed. They do not form part of any contract. The services at this property, ie gas, electricity, plumbing, heating, sanitary and drainage and any other appliances included within these details have not been tested and therefore we are unable to confirm their condition or working order.

