



30 Whinfield Drive, Keighley

Asking Price **£140,000**



30 Whinfield Drive

Keighley, Keighley

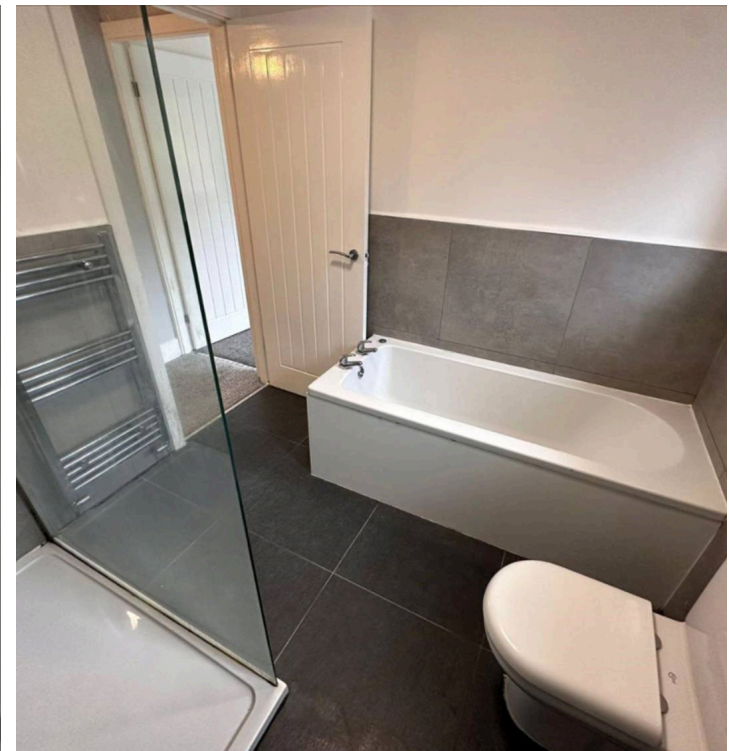
LANDLORDS and FIRST TIME BUYERS. Available for sale currently with a tenant in situ (generating a yield of 6.2% at the asking price). Large garden space to the side, well located and available now!
Council Tax band: A

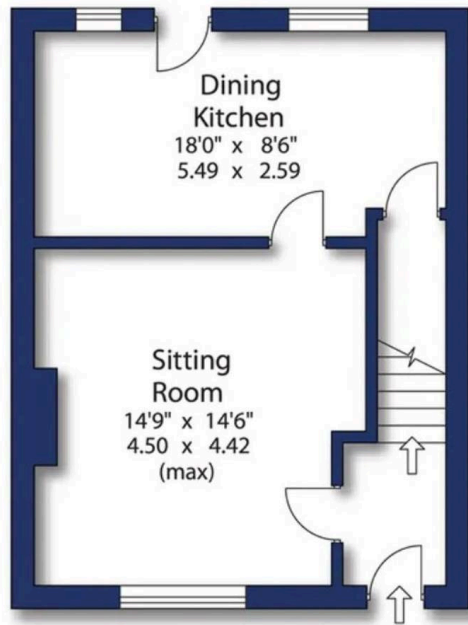
Tenure: Freehold

EPC Energy Efficiency Rating: D

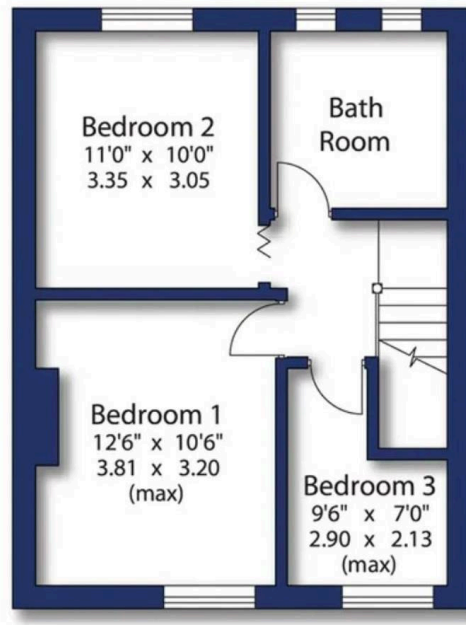
EPC Environmental Impact Rating: D

- Modern Kitchen/ Diner
- Chain Free Sale
- Investment Property
- Contemporary Bathroom with Walk-In Shower
- Fireplace in Living Room
- Large Garden Plot!

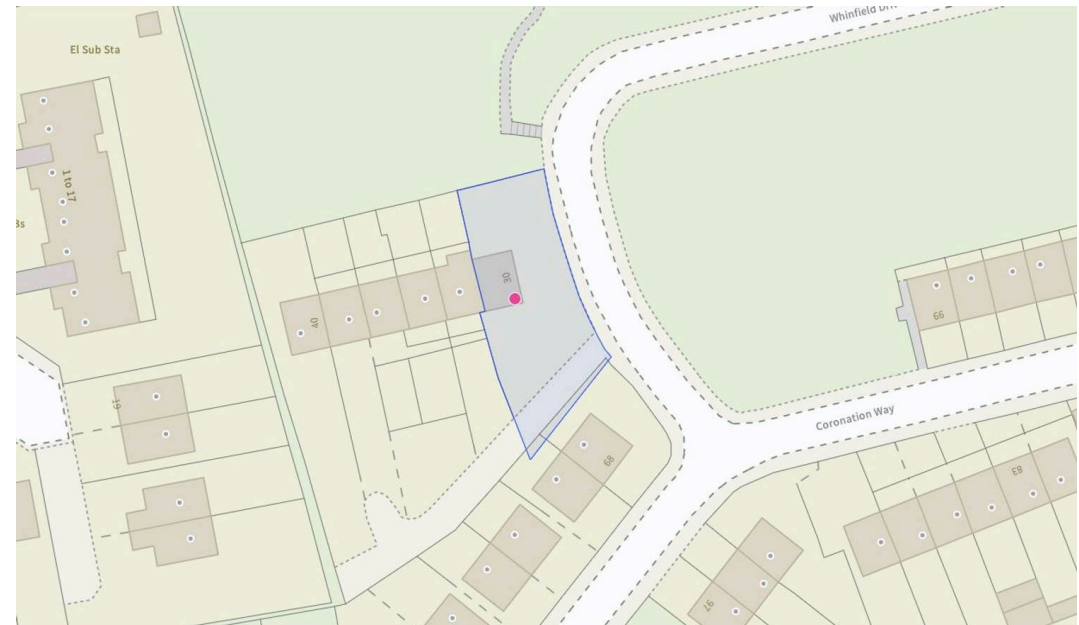




Ground Floor



First Floor





Aspire Estates

Aspire Properties, Wira Business Park Ring Road - LS16 6EB

0113 8875079

estatesales@aspirepropertygroup.co.uk

www.aspirepropertygroup.co.uk/