



2



1



2



B

DavidJames
the estate agent

Mansfield Road, Woodthorpe, Nottingham, NG5 3GB

£850 Per Calendar Month

About This Property

Situated in the popular area of Woodthorpe, this well-presented apartment offers modern living in a highly convenient location. The property features a bright and spacious open plan living area, incorporating a kitchen with appliances. There are two double bedrooms, with bedroom one benefiting from its own en-suite shower room, while a separate bathroom/WC with a contemporary white suite serves the rest of the property. Additional benefits include UPVC double glazing and gas central heating throughout whilst externally, the property enjoys access to a communal car park with an allocated parking space. Perfectly positioned, the apartment is within easy reach of a variety of local amenities and excellent transport links, with regular bus services nearby and Nottingham City Hospital just a 15-minute walk away, making it an ideal choice for professionals and healthcare workers alike.

TENANCY DETAILS

Available From: 26th June 2026

Furnishing: Unfurnished

EPC Rating: B

Council Band: B

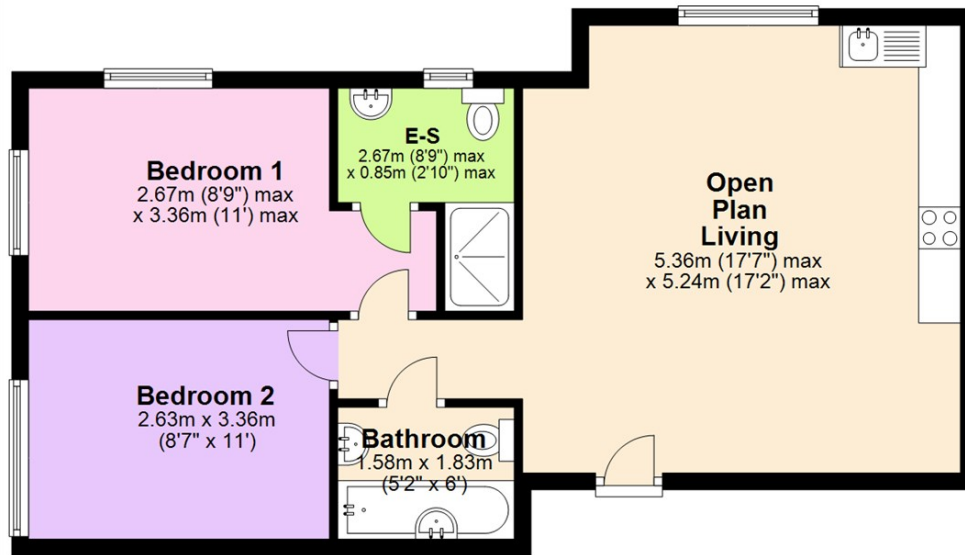
- Modern first floor apartment a 15-minute walk from City Hospital
- Two double bedrooms
- Two bathrooms including an en-suite shower room to bedroom one
- Open plan living
- Kitchen with integrated appliances
- Bathroom/WC with white suite
- UPVC double glazing
- Gas central heating
- Allocated parking space
- Ample amenities and regular bus links close by



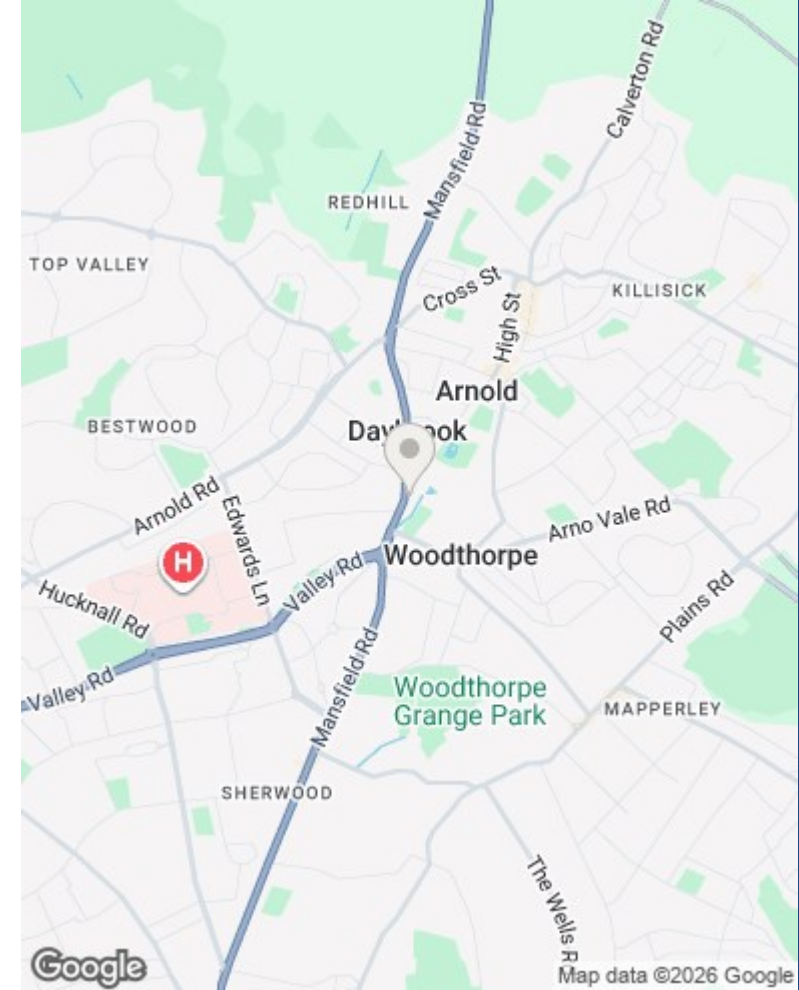


First Floor

Approx. 57.8 sq. metres (621.7 sq. feet)



Total area: approx. 57.8 sq. metres (621.7 sq. feet)



These particulars are produced in good faith, are set out as a general guide only and do not constitute any part of a contract. No person in the employment of David James Estate Agents Ltd has any authority to make any representation whatsoever in relation to the property. All services, together with electrical fittings or fitted appliances have NOT been tested. All the measurements given in the details are approximate. Floor plans are for illustrative purposes only and are not drawn to scale. The position and size of doors, windows, appliances and other features are approximate only. The photographs of this property have been taken with a 10mm wide-angle lens. No responsibility can be accepted for any loss or expense incurred in viewing. If you have a property to sell you may wish to take advantage of our free valuation service. David James Estate Agents have established professional relationships with third-party suppliers for the provision of services to Clients. As remuneration for this professional relationship, the agent receives referral commission from the third-party company. David James Estate Agents receives the following commission from each third party supplier on a per referral basis: W A Barnes Ltd: £60 including VAT. All Moves UK Ltd: 18% including VAT of the invoice total (£107 including VAT average). MoveWithUs Limited: £188 including VAT (average).

Council Tax Band: B
Gedling Borough

DavidJames
the estate agent

David James Estate Agents
45b Plains Road, Mapperley, Nottingham, NG3 5JU
t: 0115 962 4213 e: lettings@david-james.com

naea | propertymark
PROTECTED

The Property Ombudsman