



Bath Road

Peasedown St. John, BA2 8DL

£199,950

Vendor comments "The property is perfectly located between Bath and beautiful surrounding countryside with all amenities on it's doorstep."

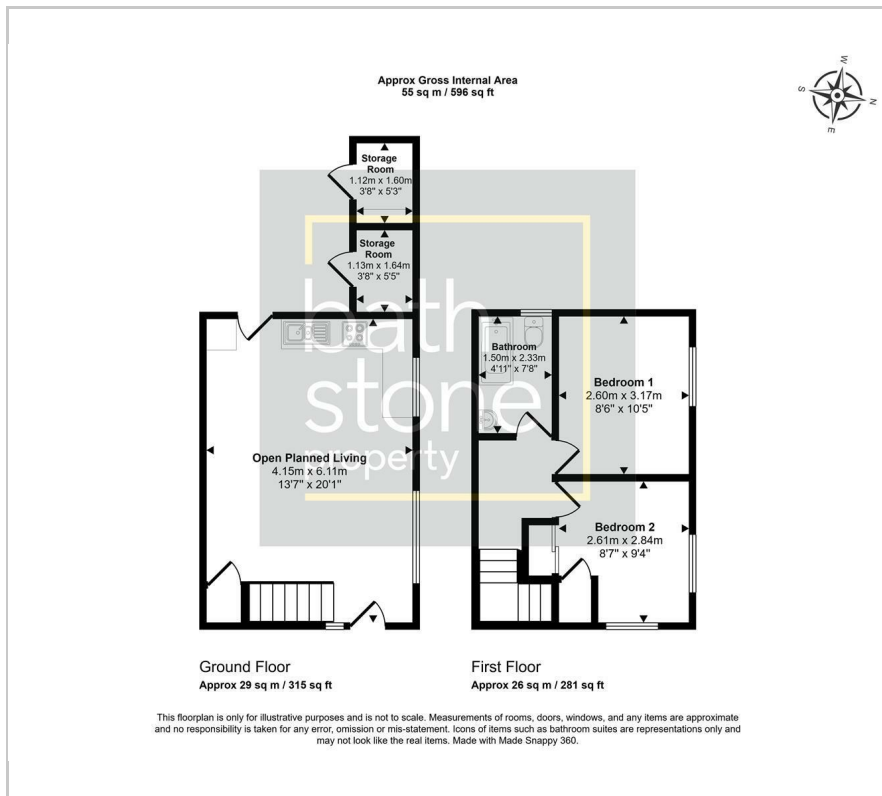
- No onward sales chain!
- Courtyard garden
- Central location
- Near amenities and public transport
- Two bedrooms
- Open planned living

Viewing

Please contact our Bath Stone Property (MSN) Office on 01761 360144 if you wish to arrange a viewing appointment for this property or require further information.



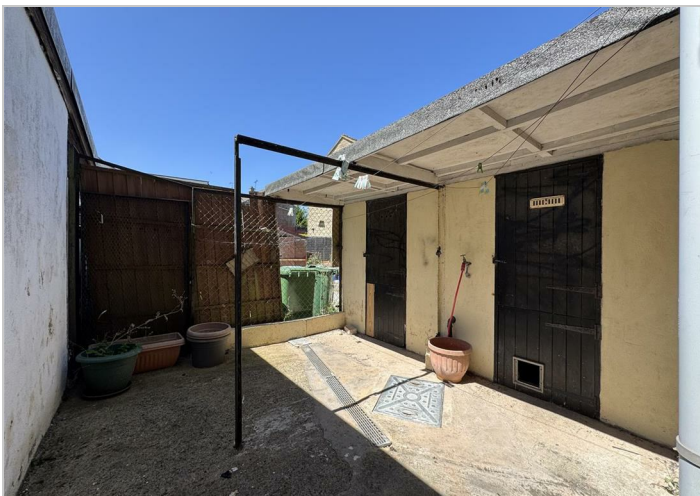
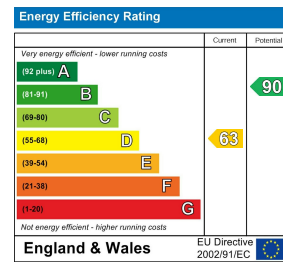
Floor Plan



Area Map



Energy Efficiency Graph



These particulars, whilst believed to be accurate are set out as a general outline only for guidance and do not constitute any part of an offer or contract. Intending purchasers should not rely on them as statements of representation of fact, but must satisfy themselves by inspection or otherwise as to their accuracy. No person in this firm's employment has the authority to make or give any representation or warranty in respect of the property.