



Juniper Drive, SW18
£319,950



A stylish studio apartment set within this exclusive riverside development with scenic views, 24 hour concierge, resident's gym and communal gardens giving access to The Thames riverside.

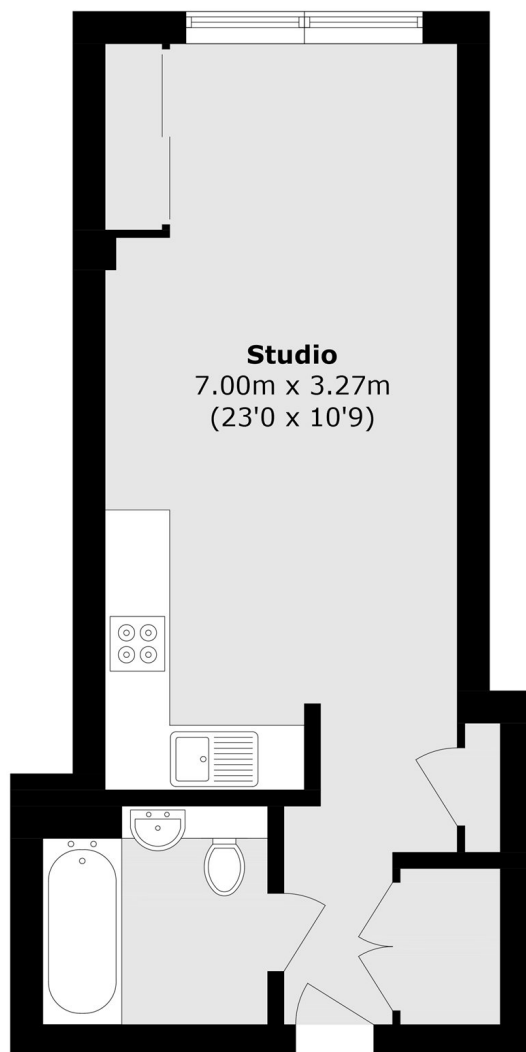
Features

- Studio Apartment
- Stylish Interiors
- Riverside Development
- 24 Hour Concierge
- Resident's Gym
- Top Floor

Juniper Drive is located by The Thames by Wandsworth Bridge with the popular bars, restaurants and shops of Wandsworth Town.



Juniper Drive, London, SW18



Total area (approx.): 32.0 sq. m (344.4 sq. ft)

Contact

To arrange a viewing call our office on the number below or visit our website.



Energy Rating: B. We aim to make our particulars both accurate and reliable. However they are not guaranteed; nor do they form part of an offer or contract. If you require clarification on any points then please contact us, especially if you're traveling some distance to view. Please note that appliances and heating systems have not been tested and therefore no warranties can be given as to their good working order.