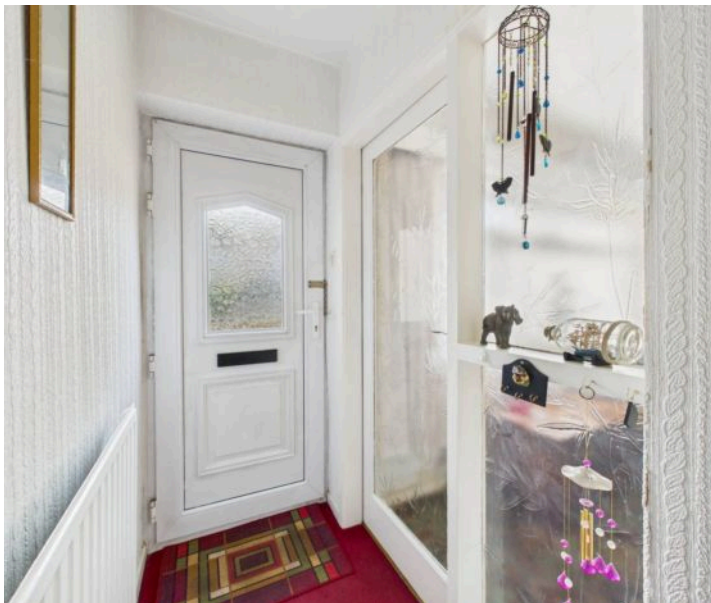




150 Westdale Lane, Carlton – NG4 3PB

Guide Price **£170,000–£190,000**

DavidJames
the estate agent



150 Westdale Lane

Carlton, Nottingham

GUIDE PRICE £170,000-£190,000 3 bed mid-townhouse with no upward chain located between Mapperley & Carlton's amenities & bus links! Boasting a lounge, dining/kitchen, garden & garage in a block!

Council Tax band: B

Tenure: Freehold

EPC Energy Efficiency Rating: D

EPC Environmental Impact Rating:

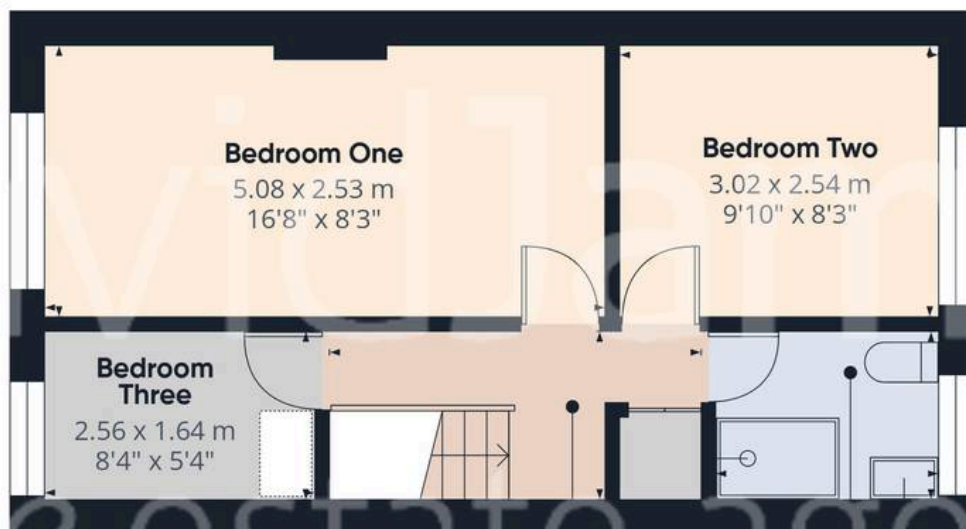
- Mid-townhouse house with no upward chain
- Great opportunity for first-time buyers or investors
- Offering excellent potential for modernisation and personalisation
- Situated in a popular location close to Mapperley's amenities, shops and regular bus services
- Bright and spacious lounge with feature stone-effect fireplace
- Well-equipped dining/kitchen with base and wall units and space for a table and chairs
- Three bedrooms (two good-sized doubles rooms)
- Shower room with separate shower enclosure with electric shower
- Gas central heating with combination boiler
- Low maintenance rear garden with gated access to the garage in a block







Floor 0



Floor 1

Approximate total area⁽¹⁾

65.4 m²

705 ft²

Reduced headroom

0.6 m²

6 ft²

(1) Excluding balconies and terraces

Reduced headroom

Below 1.5 m/5 ft

Calculations reference the RICS IPMS 3C standard. Measurements are approximate and not to scale. This floor plan is intended for illustration only.

GIRAFFE360



David James Estate Agents

376 Carlton Hill, Carlton - NG4 1JA

0115 987 8957 • carlton@david-james.com • www.david-james.com

These particulars are produced in good faith and are set out as a general guide only. Measurements are approximate and floor plans are for illustrative purposes only. Services have not been tested. We have established professional relationships with third-party suppliers for the provision of services to Clients, details of which can be found on the property listing page on our website.