



**2 Fryatt Street, Barry**

Barry

**£135,000**



## 2 Fryatt Street

Barry, Barry

Two bedroom terraced house near Barry town with sea views, original features, south facing garden, and great renovation potential. Close to shops and transport. Ideal for buyers seeking a project.

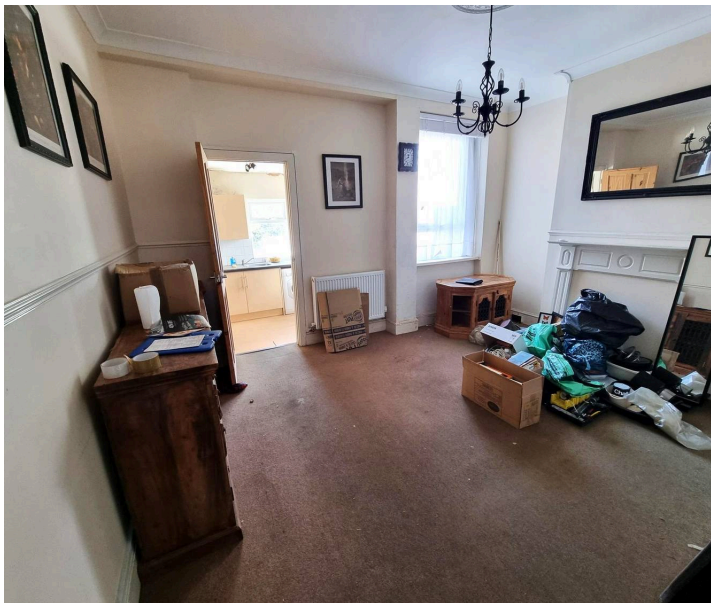
Council Tax band: B

Tenure: Freehold

EPC Energy Efficiency Rating: E

EPC Environmental Impact Rating: E

- Double bedrooms
- Sea Views
- South facing garden
- Located walking distance to Barry town
- Great investment opportunity
- Two Receptions





### Lounge

10' 4" x 8' 8" (3.15m x 2.64m)

Original fireplace. Fitted carpet. Gas radiator. Double glazed window to front. Electrical point. Woodchip wallpaper. Access to meter.

### Dining room

14' 1" x 11' 4" (4.29m x 3.45m)

Original features. Double glazed window to rear. Access to kitchen and stairs rising to first. Fitted carpet. Flat plastered walls and ceiling. Gas radiator. Electrical point.

### Entrance Hall

Access to meter and consumer unit. Fitted carpet. Gas radiator. Access to lounge and dining room.

### Kitchen

8' 5" x 7' 9" (2.57m x 2.36m)

Range of wall and base units. Steel sink basin. Laminate flooring. Vertical gas radiator. Double glazed window to rear. PVC door leading to rear garden. Space for washing machine and oven. Access to lounge. Electrical point.

### Landing

Fitted carpet. Wood chipped walls. Access to loft.

### Bathroom

Obscure double glazed window to rear. Gas radiator. Access to boiler in storage cupboard. W.C and bath with shower head. Vinyl flooring. Wood chip walls.

### Bedroom One

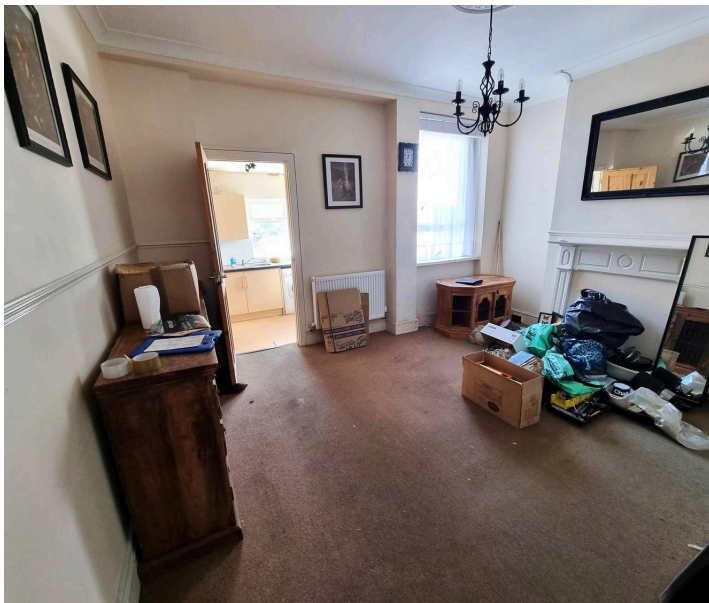
14' 2" x 9' 0" (4.32m x 2.74m)

Two double glazed windows to front. Fitted carpet. Part flat plastered walls and part wood chipped. Gas radiator. Electric point.

### Bedroom Two

10' 6" x 9' 9" (3.20m x 2.97m)

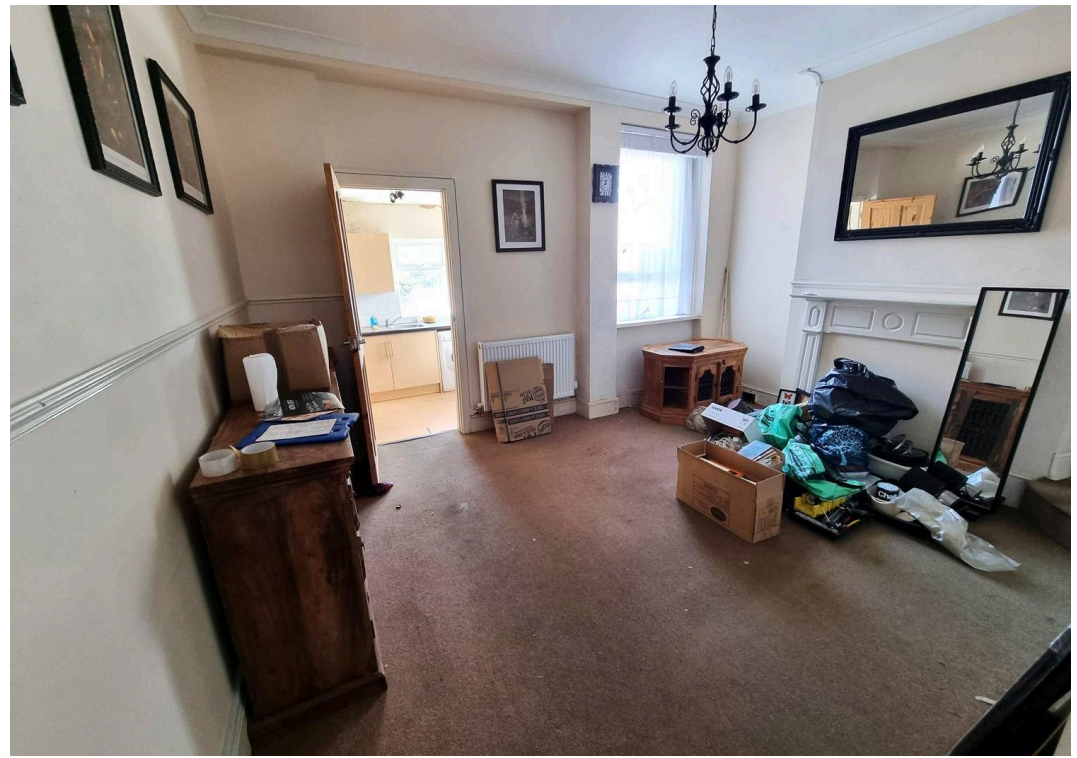
Flat plastered walls. Double glazed window to rear. Gas radiator. Electric point.



## GARDEN

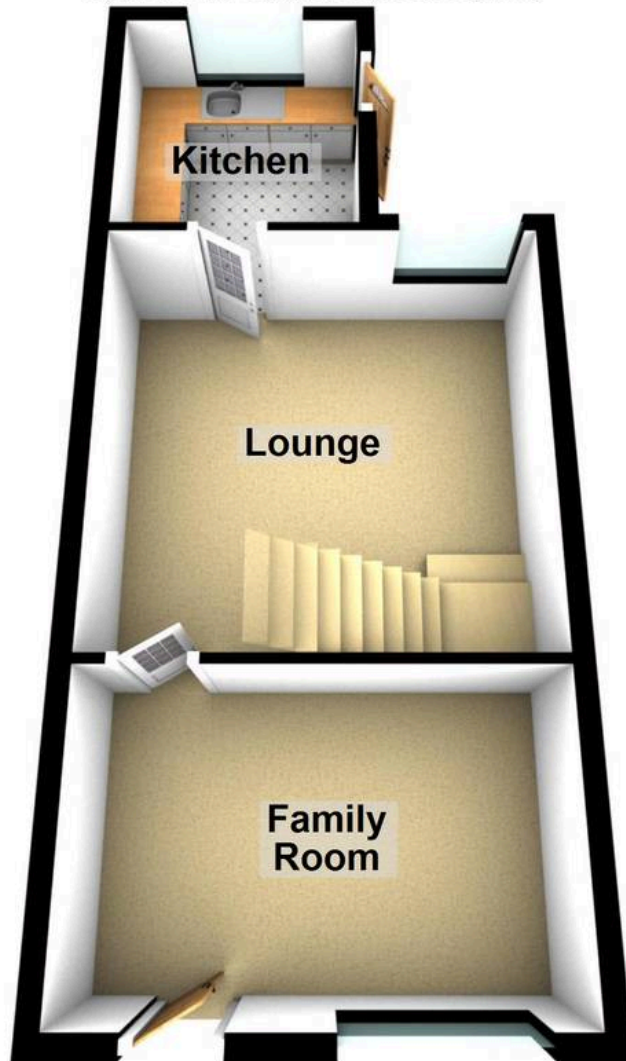
South facing. Part patio and part lawn. Rear access.  
Storage shed.





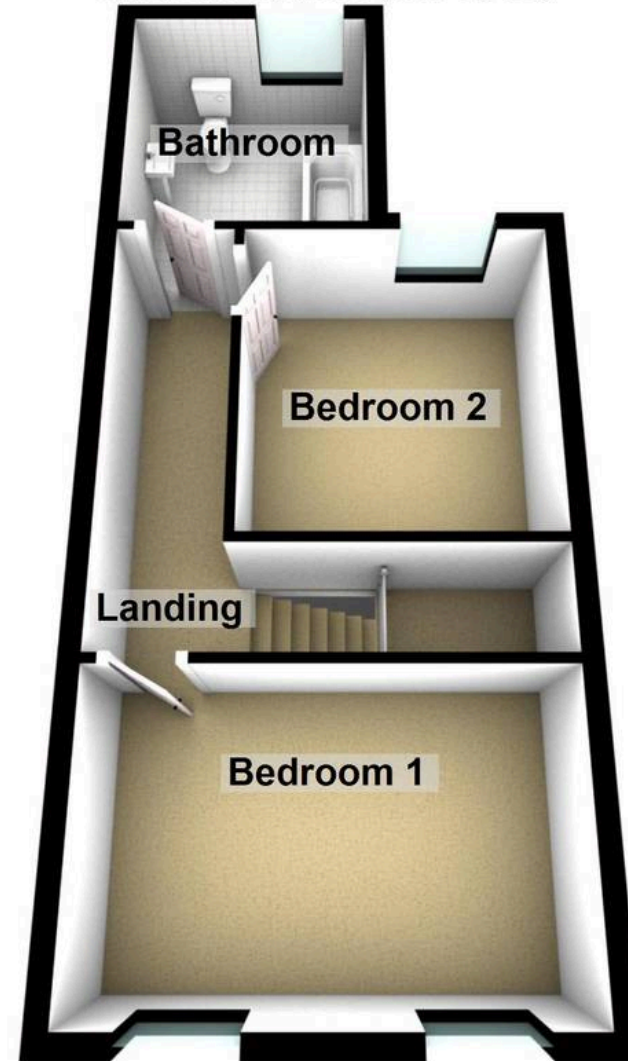
## Ground Floor

Approx. 37.7 sq. metres (405.7 sq. feet)



## First Floor

Approx. 37.7 sq. metres (405.7 sq. feet)



Total area: approx. 75.4 sq. metres (811.5 sq. feet)



## Daniel Matthew Estate Agents Barry

14 High Street Barry, Vale of Glamorgan - CF62 7EA

01446502806

[barry@danielmatthew.co.uk](mailto:barry@danielmatthew.co.uk)

[www.danielmatthew.co.uk/](http://www.danielmatthew.co.uk/)

**DanielMatthew**  
ESTATE AGENTS