



COUNTRY
HOLMES

Rose Cottage, 50, Turnlee Road

£245,000

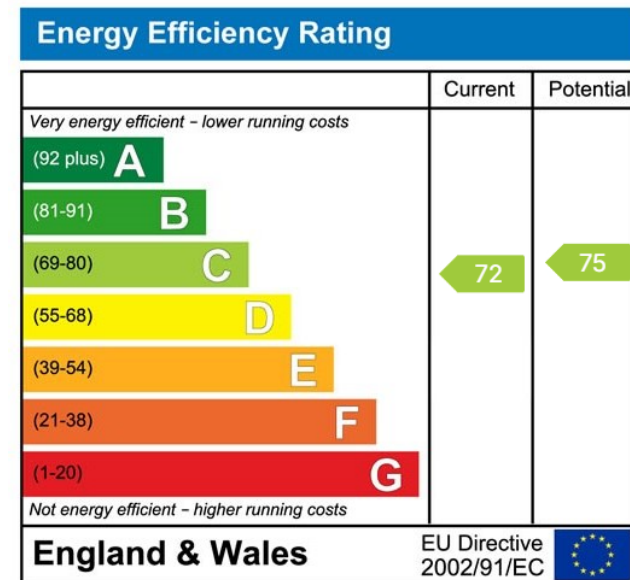
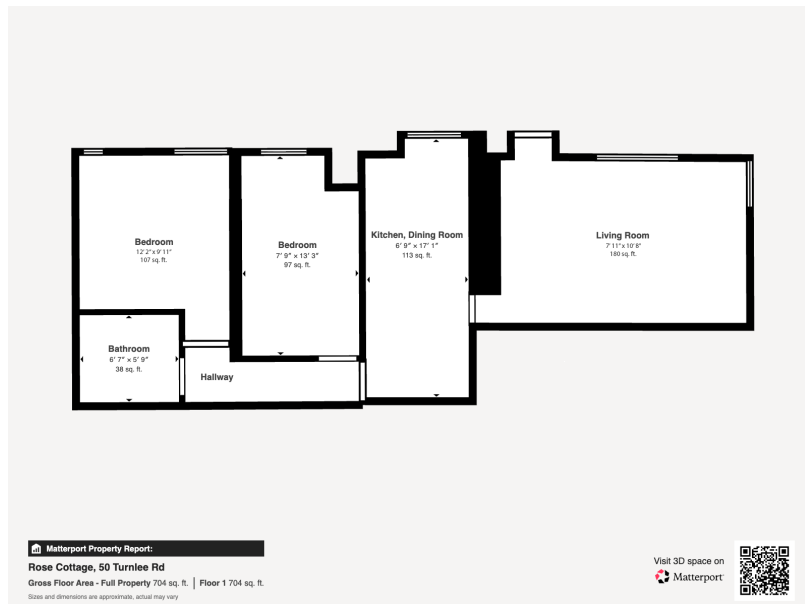
🛏️ 2 🚿 1 🚗 1



- Charming two-bedroom ground floor stone-built apartment
- Recently refurbished in 2021
- Rare opportunity with significant future potential
- Easy access to Manchester via road and rail
- Located on the edge of the Peak District National Park
- Adjoining plot of land with development potential (STPP)
- Character features including mullion windows and exposed beams
- Adjoining plot of land with development potential (STPP)
- Close to Glossop town centre, amenities and transport links



A charming two-bedroom ground floor stone-built apartment, refurbished in 2021 and rich in character features. The property includes a valuable adjoining plot of land offering excellent potential for development or off-road parking (subject to planning). Ideally located on the edge of the Peak District while remaining close to Glossop town centre and transport links, this is a rare opportunity combining lifestyle and future potential.



01457 761310 | glossop@countryholmes.co.uk | www.countryholmes.co.uk
 18 High Street West, Glossop, Derbyshire, SK13 8BH